



300 Mbps VDSL/ADSL Modem Router

Fast DSL Router Support
100 Mbps VDSL Access

TD-W9970



 VDSL/ADSL/Fiber/Cable
Compatible

 300 Mbps
Wireless Speed

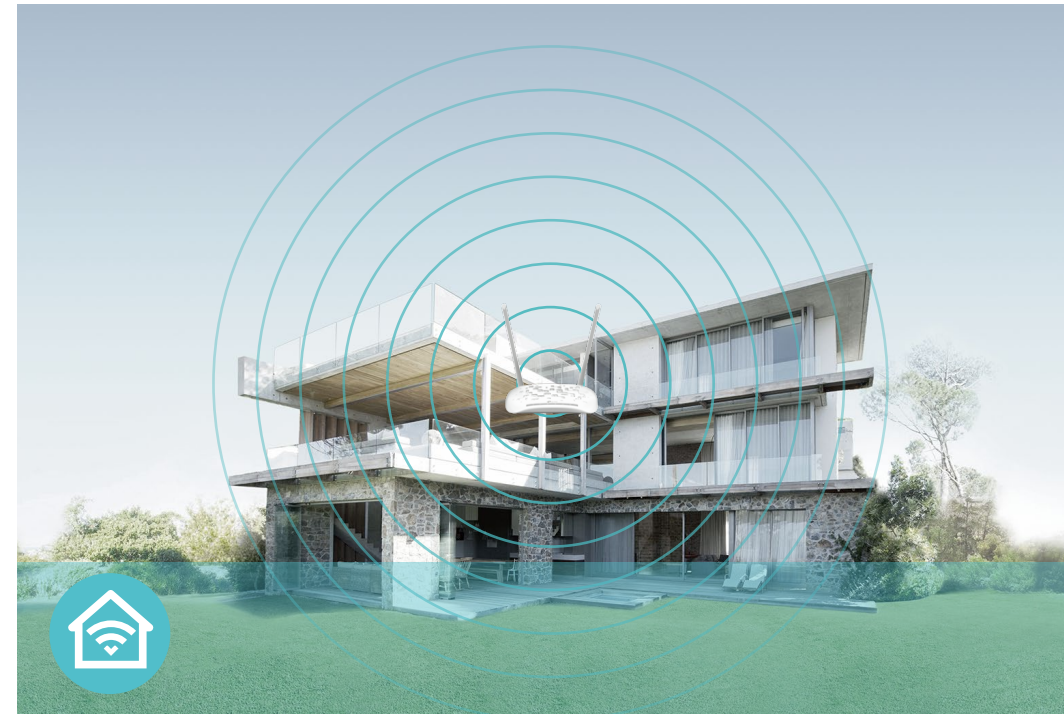
 USB
2.0 Port

Features



Speed

- **Ultimate Wireless Speed** – Up to 300 Mbps makes it ideal for heavy bandwidth consuming or interruption sensitive applications like online gaming, Internet calls and even the HD video streaming
- **High Speed VDSL** – VDSL Broadband Access of up to 100 Mbps speeds ensures your home internet needs are met



Wi-Fi Range

- **Expansive Coverage** – 300 Mbps Wi-Fi allows stable speed for wireless activities, such as streaming, surfing, browsing and posting social media
- **High-gain Antennas** – Two 4 dBi high-gain antennas expand network coverage across your home



Reliability

- **Easy Bandwidth Management** – IP-based Bandwidth Control makes it easier for you to manage the bandwidth of connected devices

Features



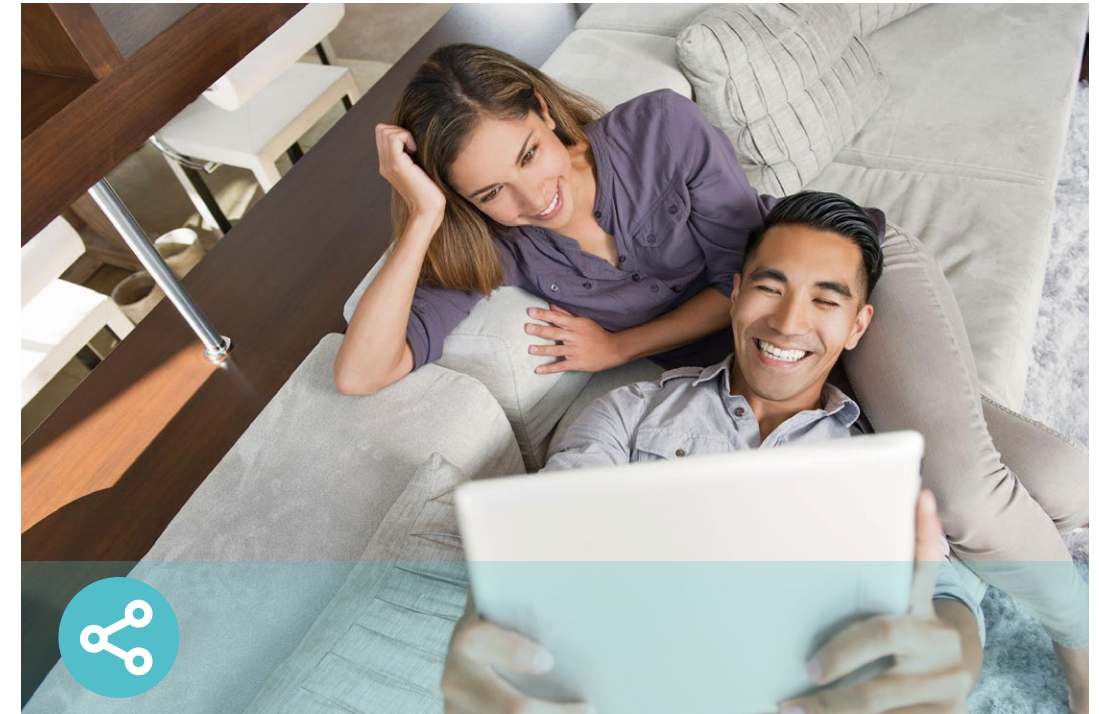
Ease of Use

- Intuitive Web UI – Ensures quick and simple installation without hassle
- Wireless Schedule – Wireless Schedule lets you turn the Wi-Fi radio on or off based on a preset timetable
- Fast Encryption – Easily set up an encrypted wireless connection at a push of the WPS button
- Easy Wi-Fi On/Off – Turn On/Off wireless radio using the Wi-Fi button
- Power On/Off – Conveniently power on or off your router as required



Security

- Guest Network – Keep your main network secure by creating a separate network for friends and visitors
- Parental Controls – Manage when and how connected devices can access the internet
- Encryptions for Secure Network – WPA-PSK/WPA2-PSK encryptions provide active protection against security threats
- VPN Support – Secure access to your home or office network from remote devices



Easy Sharing

- USB Port for Fast Sharing – Share files and media with your friends or family with the USB port, and access your files and media from network devices remotely through the router's FTP server
- Built-in Media Server – Allows you to play music, watch videos and view photos from any device on your network

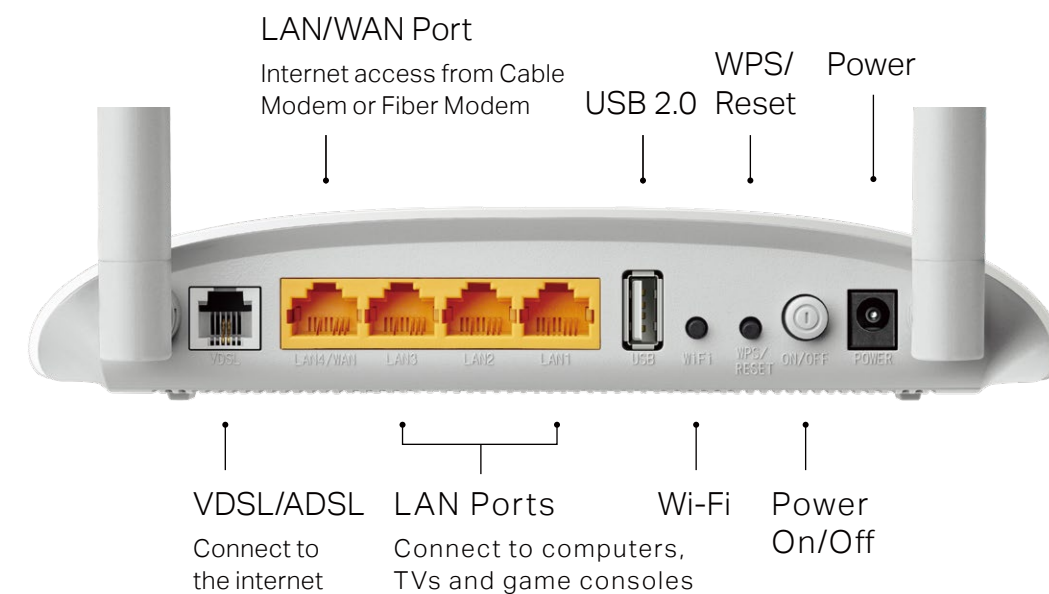
Specifications

Hardware

- Ports: 1 10/100 Mbps LAN/WAN + 3 10/100 Mbps LAN + 1 RJ11 + 1 USB 2.0
- Button: WPS/Reset Button, Wi-Fi Button, Power On/Off Button
- Antenna: 2 × 4 dBi Fixed Omni-Directional Antennas
- External Power Supply: 12V/1A
- Dimensions (W x D x H): 7.7 × 5.1 × 1.4 in. (195 × 130 × 36 mm)
- IEEE Standards: IEEE 802.3, 802.3u
- ADSL Standards: Full-rate ANSI T1.413 Issue 2, ITU-T G.992.1(G.DMT), ITU-T G.994.1 (G.hs), ITU-T G.995.1
- ADSL2 Standards: ITU-T G.992.3 (G.DMT.bis)
- ADSL2+ Standards: ITU-T G.992.5
- VDSL2 Standards: ITU-T G.993.2, ITU-T G.993.5 (G.vector), ITU-T G.998.4 (G.INP)

Wireless

- Wireless Standards: IEEE 802.11b, 802.11g, 802.11n
- Frequency: 2.400 - 2.4835GHz
- Signal Rate: 300 Mbps at 2.4GHz
- Transmit Power: <20dBm(EIRP)
- Wireless Function: Enable/Disable Wireless Radio, WDS Bridge, WMM, Wireless Statistics
- Wireless Security: Supports 64/128-bit WEP, WPA/WPA2, WPA-PSK/WPA2-PSK encryptions, Wireless MAC Filtering



Specifications

Software

- Operation Modes: DSL Modem Router, 3G/4G Router, Wireless Router
- DHCP: Server, Client, DHCP Client List, Address Reservation, DHCP Relay
- Quality of Service: WMM, Bandwidth Control (IP QoS)
- Port Forwarding: Virtual Server, Port Triggering, UPnP, DMZ, Manage Control
- Dynamic DNS: DynDns, NO-IP
- VPN Pass-Through: PPTP, L2TP, IPSec Pass-through
- ATM/PPP Protocols: ATM Forum UNI3.1/4.0, PPP over ATM (RFC 2364), PPP over Ethernet (RFC2516), IPoA (RFC1577/2225), PVC - Up to 8 PVCs
- Security: NAT Firewall, SPI Firewall, IP Address/Domain Filter, IP/MAC Address Binding
- USB Sharing: Storage Sharing, FTP Server, Media Server
- Management: Remote management, Telnet management, Command Line Interface, SSL for TR-069, SNMP V1/V2C, Web Based Firmware Upgrade, CWMP (TR-069), Diagnostic Tools
- Guest Network: 2.4GHz guest network
- IPSec VPN: Supports up to 10 IPSec VPN tunnels
- Protocols: Supports IPv4 and IPv6

Others

- Certification: CE, RoHS
- System Requirements:
Windows 10/8.1/8/7/Vista/XP or Mac OS or Linux-based operating system
- Environment
Operating Temperature: 0°C~40°C (32°F ~104°F)
Storage Temperature: -40°C~70°C (-40°F ~158°F)
Operating Humidity: 10%~90% non-condensing
Storage Humidity: 5%~90% non-condensing
- Package Contents
DSL Modem Router TD-W9970
External DSL Splitter
RJ11 DSL Cable
RJ45 Ethernet Cable
Quick Installation Guide
Power Adapter



For more information, please visit

<https://www.tp-link.com/en/home-networking/dsl-modem-router/td-w9970>

or scan the QR code left

Specifications are subject to change without notice. TP-Link is a registered trademark of TP-Link Technologies Co., Ltd. Other brands and product names are trademarks or registered trademarks of their respective holders. Copyright ©2019 TP-Link Technologies Co., Ltd. All rights reserved.

*Maximum wireless signal rates are the physical rates derived from IEEE Standard 802.11 specifications. Actual wireless data throughput and wireless coverage are not guaranteed and will vary as a result of network conditions, client limitations, and environmental factors, including building materials, obstacles, volume and density of traffic, and client location.

www.tp-link.com

TP-Link 300 Mbps VDSL/ADSL Modem Router TD-W9970