

Changed Jul 03, 2024 14:07

Reviewed Jul 03, 2024 14:07

Erudus ID a647b209d99d4ddd99f06e7ec79bbb4

Version 1.0

# Kellogg's Crunchy Nut Corn Flakes Bag Pack 4x460g

Crunchy Nut Cereal 4x0.46kg

## PRODUCT DESCRIPTION

Breakfast just got a whole lot crunchier with Kellogg's Crunchy Nut Cereal. The irresistibly crunchy flakes of golden corn are drizzled in yummy honey and chopped peanuts. This breakfast table classic is certain to brighten up your day with the delicious taste of honey combined with the classic Crunchy Nut taste you know and love. Not only do they taste amazing, Kellogg's Crunchy Nut Corn Flakes are enriched with 8 vitamins & minerals, plus they are made with no artificial colours or flavours. The only trouble is they taste too good! Enjoy as part of a balanced diet and healthy lifestyle. \*Please always check the label of the pack you receive as there may be differences from the information you read on site due to stock changeover

Brand	Kellanova (previously Kellogg's)
Manufacturer Product Code	5103298000
Product Type	Food
Product Category	Breakfast Cereal
Storage Type	Ambient
Erudus ID	a647b209d99d4ddd99f06e7ec79bbb4
Specification Type	Cereals



Inner Component GTIN	5050083478505
Outer Case GTIN	05059319032986



## INGREDIENTS

### Ingredient Declaration

Maize, sugar, **PEANUTS** (6%), **BARLEY** malt extract, molasses, honey (1%), salt, niacin, iron, vitamin B6, riboflavin, thiamin, folic acid, vitamin D, vitamin B12.

ALLERGENS

Product Contains:

<b>Celery/Celeriac</b>	No	<b>Mustard</b>	No
<b>Cereals Containing Gluten</b>	Yes	<b>Nuts (Tree)</b>	No
<b>Barley</b>	Yes	<b>Almond nuts</b>	No
<b>Oats</b>	No	<b>Brazil nuts</b>	No
<b>Rye</b>	No	<b>Cashew nuts</b>	No
<b>Wheat (including Spelt and Khorasan)</b>	No	<b>Hazelnuts</b>	No
<b>Crustacea</b>	No	<b>Macadamia (Queensland) nuts</b>	No
<b>Eggs</b>	No	<b>Pecan nuts</b>	No
<b>Fish</b>	No	<b>Pistachio nuts</b>	No
<b>Lupin</b>	No	<b>Walnuts</b>	No
<b>Milk</b>	No	<b>Peanuts</b>	Yes
<b>Molluscs</b>	No	<b>Sesame Seeds</b>	No
		<b>Soybeans</b>	No
		<b>Sulphur Dioxide and Sulphites</b>	No

SUPPLEMENTARY  
INGREDIENT  
INFORMATION  
ADDITIVES

<b>GM Protein/DNA</b>	No
-----------------------	----

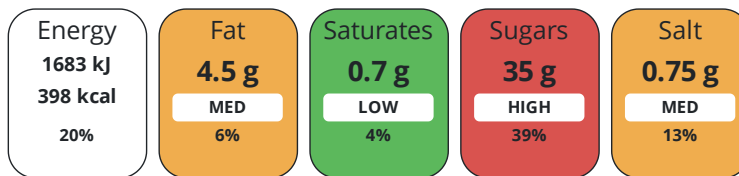
Product Contains:

DIET  
SUITABILITY

<b>Vegan Diet</b>	No	<b>Vegetarian Diet</b>	Suitable for
<b>Halal Diet</b>	No	<b>Kosher Diet</b>	No

NUTRITIONAL  
INFORMATION

Each 100g/ml portion contains:



of your reference intake.

Typical values per 100g/ml : Energy 398kcal / 1683kj

Nutrient	per 100g	RI per 100g	per 30g serving	RI per 30g serving
<b>Energy (kJ)</b>	1683 kJ	20%	504.9 kJ	6%
<b>Energy (kcal)</b>	398 kcal	20%	119.4 kcal	6%
<b>Fat</b>	4.5 g	6%	1.4 g	2%
<b>of which Saturates</b>	0.7 g	4%	0.2 g	1%
<b>Carbohydrate</b>	82 g	32%	24.6 g	9%
<b>of which Sugars</b>	35 g	39%	10.5 g	12%
<b>Fibre</b>	2.5 g		0.8 g	
<b>Protein</b>	6 g	12%	1.8 g	4%
<b>Salt</b>	0.75 g	13%	0.2 g	3%

<b>Serving Size</b>	30 g
---------------------	------

SUPPLEMENTARY  
NUTRITIONAL  
INFORMATION

HFSS (HIGH IN  
FAT, SALT AND  
SUGAR)

<b>HFSS Status</b>	Yes
--------------------	-----

HANDLING &  
STORAGE  
INFORMATION

**Directions For Use**

Eat as directed

**Storage Instructions**

Store in a cool dry place.

**Shelf Life from Time of Production** 365 Days

ORIGIN

**Product Country of Origin/Place of** United Kingdom

**Provenance**

PRODUCT  
CHARACTERISTICS

Standards Testing

**Do you undertake trend analysis of microbiological results?** No

**Is shelf life testing undertaken?** No

CONFIGURATION

Case Configuration

Inner Pack Configuration

**Total Quantity of Inner Components in Outer Case** 4 Units

**Is the Outer Case Splittable?** No

PRODUCT  
WEIGHTS

Inner Component

**Variable Weight Consumer Item** No

**Inner Component Weight** 0.46 kg

Outer Case

**Outer Case Gross Weight** 2.36 kg

**Outer Case Net Weight** 1.84 kg

PRODUCT  
DIMENSIONS

Inner Component

**Inner Component Depth** 61 mm

**Inner Component Width** 192 mm

**Inner Component Height** 303 mm

Outer Case

**Outer Case Depth** 320 mm

**Outer Case Width** 240 mm

**Outer Case Height** 280 mm

PALLET  
INFORMATION

**Quantity of Cases Per Pallet Layer** 15 Cases

**Pallet Height** 2.57 MTR

**Quantity of Layers Per Pallet** 8 Layers

**Pallet Gross Weight** 356 kg

**Quantity of Cases Per Pallet** 120 Cases

PACKAGING

Inner Component Packaging

Type	Materials	Weight	Recycled Plastic %	Recyclable	Returnable	Composite
Bag	Plastic	5.87 g	0.00 %			

Outer Case Packaging

Type	Materials	Weight	Recycled Plastic %	Recyclable	Returnable	Composite
Case	Paper/Cardboard	65.23 g	- %			

OTHER  
INFORMATION

**Commodity Code** 19041010

**Value Added Tax Rate** No VAT

CONTACT  
INFORMATION

Address

Kellanova (previously Kellogg's)  
Kellogg  
Orange Tower  
Salford  
Greater Manchester  
M50 2HF  
England

P: (Phone) 07385931175

Commercial Contact

Stephen Allcock  
National Account Executive  
stephen.allcock2@kellanova.com

P: (Phone) 07385931175

The information on the [Erudus System](#) has been supplied by the manufacturers of the products and, whilst the owners of the Erudus System take steps to ensure the information is regularly updated, they give no warranty and no guarantee that the information is accurate. Product information and ingredients may change, please always read product labels carefully in addition to using the information provided by Erudus.

We do not accept liability for any inaccuracies or incorrect information contained on this site.  
Please visit <http://www.erudus.com/terms-and-conditions> for full terms and conditions.