

## Aero Melts Milk Chocolate Sharing Bag 92g



**EAN**  
7613287898593

**Target market(s)**  
GB, IE

### Components

**Ingredients**

- Sugar
- Dried Whole **MILK**
- Cocoa Butter
- Cocoa Mass
- Vegetable Fats (Palm, Shea)
- Whey Powder Product (from **MILK**)
- Skimmed **MILK** Powder
- Butterfat (from **MILK**)
- Emulsifier (Lecithins)
- Natural Flavouring

Milk Chocolate contains Cocoa Solids 25% minimum, Milk Solids 14% minimum and Vegetable Fats in addition to Cocoa Butter

**Nutrition**

	Per 100g	Per 12 sweets	Reference Intake*	% RI*
Energy	2222kJ	532kJ	8400kJ	
	532kcal	127kcal	2000kcal	6%
Fat	30.2g	7.2g	70g	10%
of which: saturates	17.8g	4.3g	20g	22%
Carbohydrate	57.3g	13.8g	260g	5%
of which: sugars	56.8g	13.6g	90g	15%
Fibre	1.9g	0.5g	-	-
Protein	6.8g	1.6g	50g	3%
Salt	0.22g	0.05g	6g	<1%

\*Reference Intake of an average adult (8400kJ/ 2000kcal)

Contains approximately 4 servings

Portions should be adjusted for children of different ages

**Calculated Nutrition**

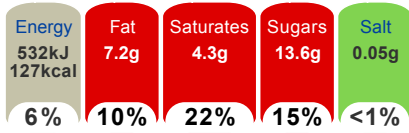
	per 100g	Per 12 sweets
Energy (kJ)	2222	532
Energy (kcal)	532	127

Fat (g)	30.2	7.2
of which saturates (g)	17.8	4.3
Carbohydrate (g)	57.3	13.8
of which sugars (g)	56.8	13.6
Fibre (g)	1.9	0.5
Protein (g)	6.8	1.6
Salt (g)	0.22	0.05

#### Front of Pack Nutrition

##### Per Portion

Each 12 sweets contain



of an adult's Reference Intake (RI)\*

Energy per 100g: 2222kJ/532kcal

\*Reference Intake of an average adult (8400kJ/ 2000kcal)

#### Nutrition Other Text

Reference Intake of an average adult (8400kJ/ 2000kcal)

Contains approximately 4 servings

Portions should be adjusted for children of different ages

#### Reference Intake Statement

Reference Intake Statement - Reference Intake of an average adult (8400kJ/ 2000kcal)

## Product Description

#### Brand

Aero

#### Manufacturer Brand

Brand - Nestlé

#### Features

Bitesize buttons of Aero® bubbly milk chocolate

Perfect for sharing moments of bubbly pleasure with friends and family

Made from our iconic, effortless, melt in the mouth aerated chocolate

No artificial colours, flavours or preservatives

#### Standardised Brand

Brand - Aero

#### Regulated Product Name

Smooth bubbly milk chocolate pieces.

## Marketing

### Company Name

Nestlé UK & Ireland

### Company Address

PO Box 203,  
York,  
YO91 1XY.

Nestlé Ireland,  
3030 Lake Drive,  
Citywest Business Campus,  
Dublin 24.

### Third Party Logos

- Rainforest Alliance
- Terracycle
- Tidyman

### Product Marketing

Share the joy of smooth, bubbly milk chocolate with Aero® Melts. Every button is a bitesize piece of our famous aerated chocolate. These delightfully bubbly buttons of delicious chocolate are perfect for sharing, whether you're watching a film with your family or catching up with friends. Feel it melt on your tongue as every single bubble is released, and revel in the pleasure of smooth milk chocolate.

Our much-loved chocolate is famous worldwide for its unique, bubbly texture, and has been for decades. Aero® was first launched in 1935 as a chocolate bar in peppermint flavour, followed by the milk chocolate variation in the 1970s. Since then, we've been creating even more ways to enjoy Aero®, including Aero® Bubbles and now Aero® Melts, the perfect way to spread the bubbly joy. With flavours such as caramel joining the range, there's an Aero® for everyone.

When it's time to catch up and enjoy a treat together, pick up a sharing bag of Aero® Melts.

### Brand Marketing

Have you tried Aero® Sharing Bars? Each bar is the ideal size for sharing with friends and family. When it's time to share a treat, enjoy the bubbly centre and smooth milk chocolate shell of Aero®.

### Other Information

Rainforest Alliance - People & Nature, Cocoa, Working with the Rainforest Alliance to support cocoa farmers and their communities. Find out more at [ra.org](http://ra.org)

® Reg. Trademark of Société des Produits Nestlé S.A.  
Nutritional Compass ®

### Further Description

AERO is part of the Nestle Cocoa Plan, which works with UTZ to ensure a better future for cocoa farmers and even better chocolate for you. Find out more at [www.nestlecocoa.com](http://www.nestlecocoa.com)

Enjoying chocolate as part of a varied, balanced diet and a healthy lifestyle, is one of life's little pleasures.

Visit <https://www.instagram.com/aerochocolateuk/> or <http://www.aerochocolate.co.uk/> for more information

## Health & Lifestyle

### Lifestyle

- Suitable for Vegetarians

### Allergy Advice

Milk - Contains

### Additives

Artificial Colours - Free From  
Artificial Flavours - Free From  
Artificial Preservatives - Free From

## Storage & Usage

### Storage Type

#### Type

Ambient

### Preparation and Usage

Know Your Servings  
12 Sweets = 1 Serving

### Storage

For Best Before End See Base. Store Cool and Dry.

### Lower Age Limit

Advisory - Years

4

## Brandbank Captured Pack Data

### Pack Size

92g e

### Numeric Size

Numeric Size - 92

### Recycling Info

Pack - Don't Recycle

### Pack Type

Type - Pouch

### Recycling Scheme

- OPRL

### Recycling Other Text

TerraCycle - Not recycled by most councils. Find out how you can still recycle at [www.terracecycle.com/en-GB](http://www.terracecycle.com/en-GB)

### Usage Count

Number of uses - Servings

4

### Usage Other Text

Contains approximately 4 servings

## Customer Services

### Manufacturers Address

PO Box 203,  
York,  
YO91 1XY.

Nestlé Ireland,  
3030 Lake Drive,  
Citywest Business Campus,  
Dublin 24.

### Return To

Contact us Free  
www.nestle.co.uk  
UK: 0800 604 604  
PO Box 203,  
York,  
YO91 1XY.

ROI: 00800 6378 5385,  
Nestlé Ireland,  
3030 Lake Drive,  
Citywest Business Campus,  
Dublin 24.  
www.aerochocolate.co.uk

### Telephone Helpline

UK: 0800 604 604  
ROI: 00800 6378 5385

### Web Address

www.nestle.co.uk  
www.aerochocolate.co.uk

### Social Media

Facebook, Twitter, Instagram /aero

## Extended Data

### Safety Warning

IMPORTANT: YOUNG CHILDREN (LESS THAN 4 YEARS) HAVE LIMITED CHEWING ABILITY AND COULD CHOKE ON SMALL SWEETS.

### Languages On Pack

- English

### Description Breakdown

Functional Name - Milk Chocolate  
Variant - Melts