

Aero Instant Hot Chocolate Sachets 24 x 40g



**EAN**

7613033121999

**Target market(s)**

GB, IE

## Components

### Ingredients

Fat Reduced Drinking Chocolate (42%) (Sugar, Fat Reduced Cocoa Powder, contains Cocoa Solids 25% minimum)

### Skimmed Milk Powder

Glucose Syrup

Sugar

Coconut Oil

### Lactose

Thickeners (E466, E415)

Natural Flavouring

Salt [Sodium Chloride, Anti-Caking Agent (E535)]

Acidity Regulator (E340)

Stabilisers (E331, E452)

### Nutrition

	Per 100g	Per 100ml	Per mug (24g + 200ml of water)	% RI*
Energy	1718 kJ	169 kJ	414 kJ	
Energy	407 kcal	40 kcal	98 kcal	5%
Fat	7.4g	0.7g	1.8g	3%
of which: saturates	6.4g	0.6g	1.5g	8%
Carbohydrate	74.4g	7.4g	17.9g	7%
of which: sugars	59.9g	5.9g	14.4g	16%
Fibre	4.4g	0.4g	1.1g	-
Protein	8.5g	0.8g	2.0g	4%
Salt	1.23g	0.12g	0.30g	5%

\*Reference Intake of an average adult (8400 kJ/2000 kcal)

Contains 40 servings

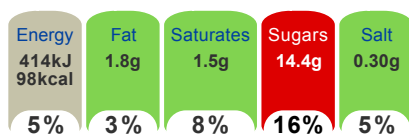
### Calculated Nutrition

	per 100g	Per 100ml	Per mug (24g + 200ml of water)
Energy (kJ)	1718	169	414
Energy (kcal)	407	40	98
Fat (g)	7.4	0.7	1.8
of which saturates (g)	6.4	0.6	1.5
Carbohydrate (g)	74.4	7.4	17.9
of which sugars (g)	59.9	5.9	14.4
Fibre (g)	4.4	0.4	1.1
Protein (g)	8.5	0.8	2
Salt (g)	1.23	0.12	0.3

### Front of Pack Nutrition

#### Per Portion

Each serving (mug) contains



of an adult's Reference Intake (RI)\*

Energy per 100ml: 169kJ / 40kcal

\*Reference Intake of an average adult (8400 kJ/2000 kcal)

## Product Description

### Brand

Aero

### Manufacturer Brand

Brand - Nestlé

### Features

No hydrogenated vegetable oil  
98 calories per mug  
Low fat  
No added colours or artificial flavours  
Suitable for vegetarians

### Standardised Brand

Brand - Aero

### Regulated Product Name

Instant Hot Chocolate Drink Mix

## Marketing

### Company Address

PO Box 207,  
York,  
YO91 1XY,  
UK.

### Trademark Information

Nutritional Compass®  
® Reg. Trademark of Société des Produits Nestlé S.A.

### Nutritional Claims

Low fat

## Health & Lifestyle

### Lifestyle

- Low Fat
- Suitable for Vegetarians

### Allergy Advice

Milk - Contains

### Additives Other Text

No added colours or artificial flavours

## Storage & Usage

### Storage Type

#### Type

Ambient

### Preparation and Usage

The way the bubbles melt on your tongue creates a deliciously smooth hot chocolate sensation - go on, indulge yourself.  
Empty one sachet into a mug  
Fill with 200ml hot, but not boiling water. Stir well to release the bubbles..  
Watch the bubbles grow and enjoy your deliciously bubbly Hot Choc drink.

### Storage

Store in a cool, dry place

## Brandbank Captured Pack Data

### Pack Size

24g e

### Numeric Size

Numeric Size - 24

### Pack Type

Type - Unspecified Pack

### Recycling Other Text

Care for the Environment  
Our corrugate carton is Recyclable and can be placed in the Paper/Board recycling stream  
Made using a minimum of 72% recycled material

### Usage Count

Number of uses - Servings

40

### Usage Other Text

Contains 40 servings

## Units

### Number of Units

Number of Units - 40

## Customer Services

### Manufacturers Address

PO Box 207,  
York,  
YO91 1XY,  
UK.

### Return To

Contact our professionals  
Tel. 0800 742 842 (UK) - 00800 6378 5385 (ROI)  
[www.NestleProfessional.co.uk](http://www.NestleProfessional.co.uk)  
PO Box 207,  
York,  
YO91 1XY,  
UK.

### Telephone Helpline

0800 742 842 (UK)  
00800 6378 5385 (ROI)

### Web Address

[www.NestleProfessional.co.uk](http://www.NestleProfessional.co.uk)

## Extended Data

### Languages On Pack

- English

### Description Breakdown

Variant - Hot Choc

