

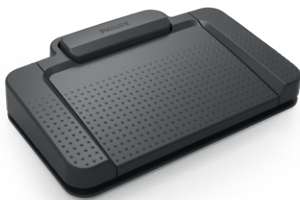
PHILIPS

Foot control

For digital systems

Ergonomic

USB plug



ACC2300 series



Transcription made easy

Keep your hands free for non-stop typing

Work faster and more accurately by using your foot to start and pause the playback of audio files. The ergonomic design was developed by closely studying transcriptionists' movements. No need to lift your foot, a slightly pressing with the foot tip is enough. Both of your hands are always free for typing, allowing you to transcribe efficiently even over an extended time period.

Superior performance

- Fast and efficient playback control for quicker and more accurate transcriptions
- Anti-slip pad keeps the device fixed to the floor
- Configurable pedal functions for a personalized transcription style

Designed for long hours of use

- Ergonomic design for comfortable use even over longer time periods
- Robust pedals and non-wearing magnetic contact switches that are built to last
- Central configuration and management save time and resources



Highlights

Fast and efficient playback control

Start, pause, rewind and fast-forward audio files with only a slight movement of the foot tip, keeping your hands free for uninterrupted typing.

Anti-slip surfaces

The anti-slip pad at the bottom of the device ensures it grips to the floor and stays in place during use. It works great on any flooring surface including carpet, tile and wood. The bumps on the top surface prevent the foot from sliding off.

Configurable pedal functions

The pedal functions can be personalized to suit your preferred transcription style via Philips SpeechControl or SpeechExec software.

Ergonomic design

The foot control was developed in cooperation with hospital ergonomists and day-to-day power users to ensure a perfectly smooth transcription process with minimal physical strain.

Heavy-duty pedals built to last

The foot control is designed to withstand long hours of regular heavy use. Magnetically controlled contact switches and rugged pedals make it a highly durable and long-lasting device.

Central management and configuration

The optional Philips SpeechExec remote device management software allows administrators to centrally manage, configure and update Philips devices, saving the company time and resources.

Versions

ACC2310



- 3-pedal design

ACC2320



- 3-pedal design

ACC2330



- 4-pedal design
- Middle pedal can be fixed in place

Specifications

Package contents

Foot control
User manual
Philips SpeechControl driver and configuration software

Compatibility

Philips SpeechExec Transcribe 5.0 or higher
Philips SpeechExec Pro Transcribe 5.0 or higher
Philips SpeechExec Enterprise Transcribe 2.5 or higher

Green specifications

Compliant with 2011/65/EU (RoHS)
Lead-free soldered product

Specifications

Product dimensions: 198 mm × 54 mm × 170 mm/7.8" × 2.1" × 6.7"
Weight: 650 g/23 oz

Accessories

Philips transcription headphones (LFH0334)
Philips transcription headphones (LFH2236)
Philips SpeechExec workflow software
Philips SpeechLive cloud dictation solution

