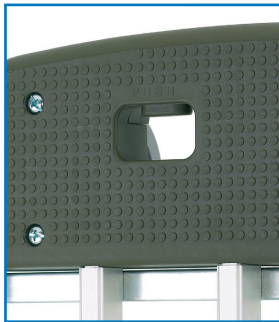


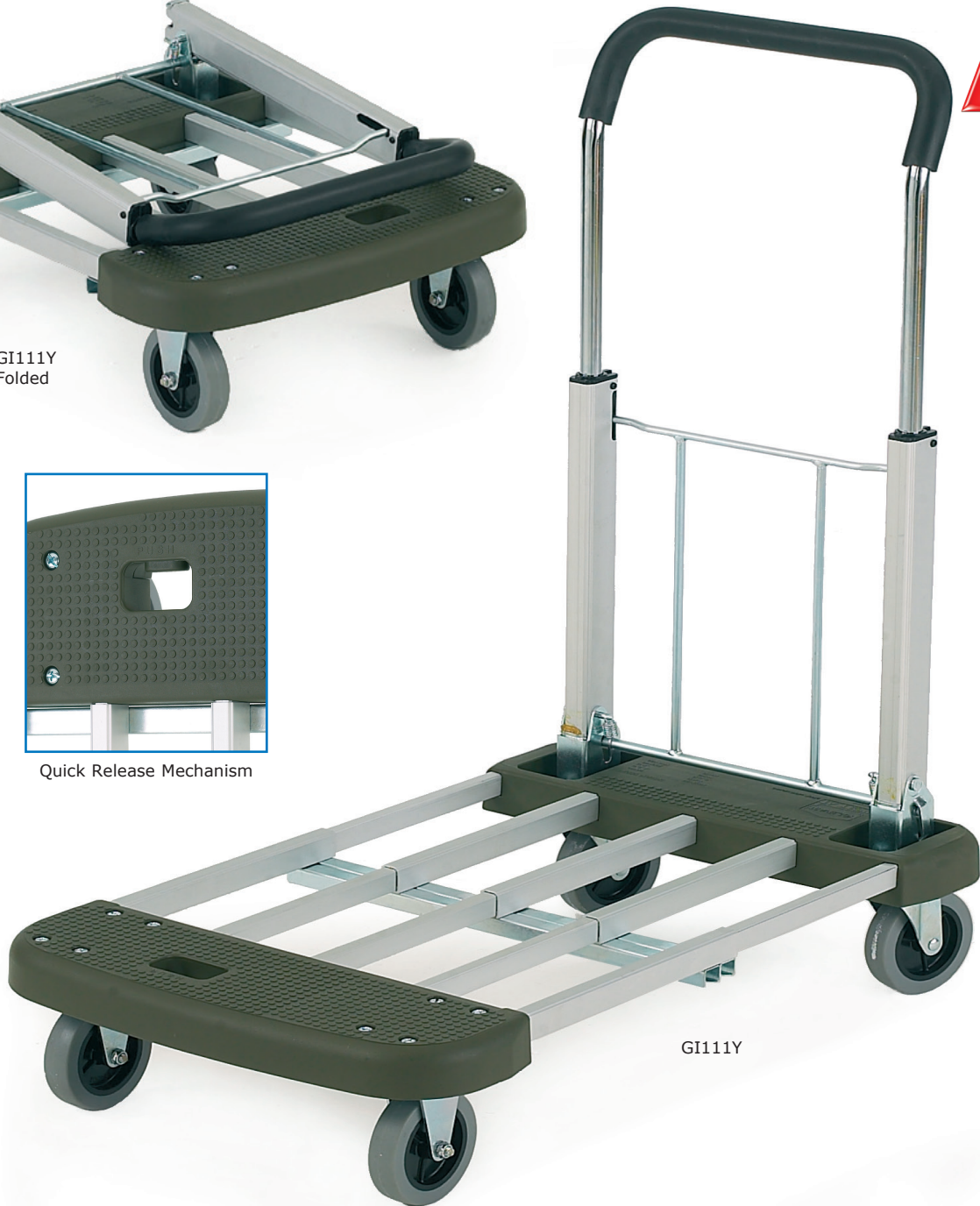
MULTI POSITION TROLLEY



GI111Y
Folded



Quick Release Mechanism



GI111Y

Manufactured from aluminium
Telescopic handle
Expanding & contracting base
Fits easily into a car boot/van
Fully moulded plastic ends
Mobile on 100mm castors

Overall Size - Open L x W x H mm	Overall Size - Folded L x W x H mm	Weight kg	Model
760 x 440 x 930	570 x 440 x 240	8	GI111Y