

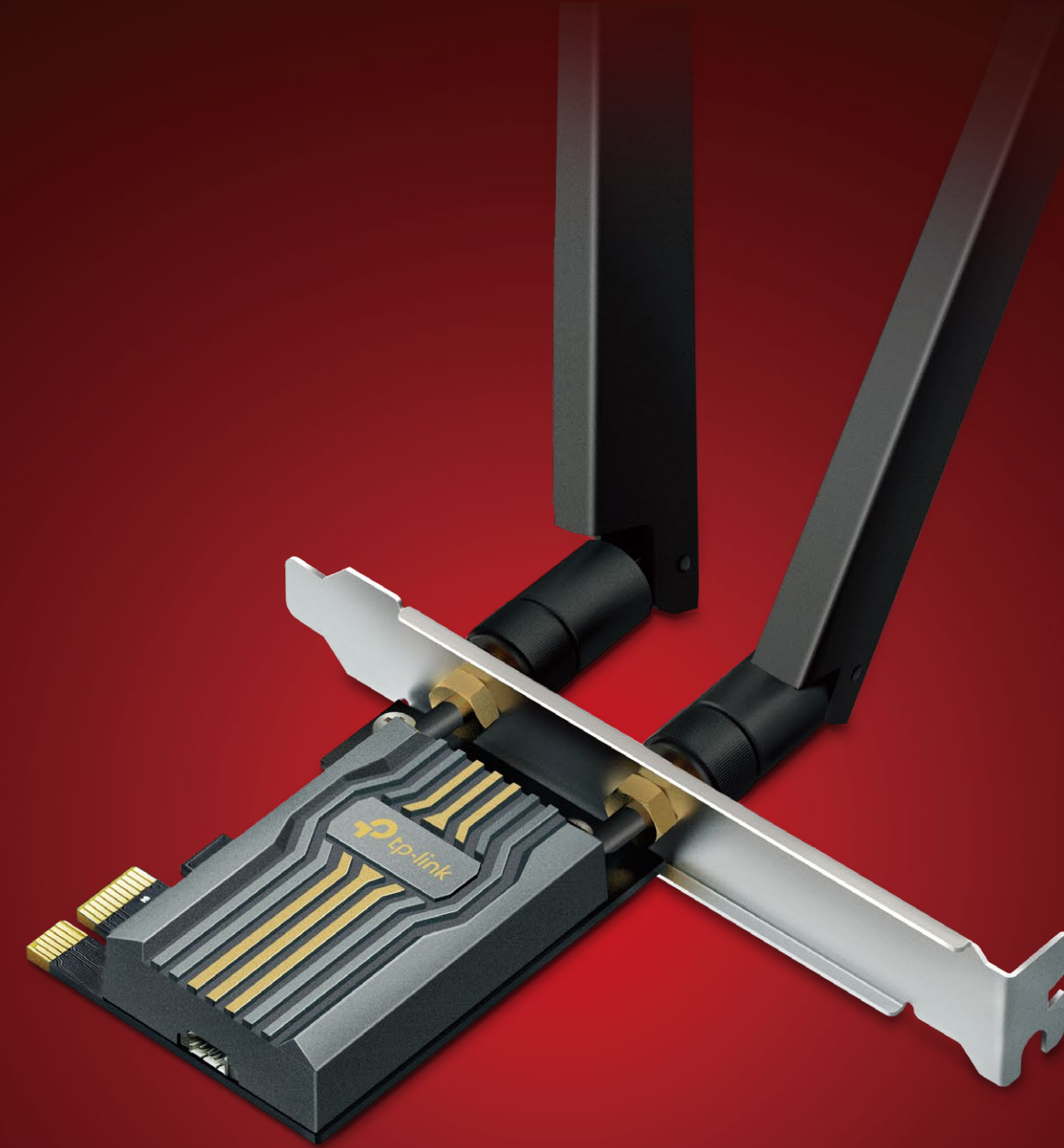


Wi-Fi 7

BE6500

Wi-Fi 7 Bluetooth PCIe Adapter

Archer TBE400E



Supercharge Your Desktop with Wi-Fi 7

Unparalleled Tri-Band Speed

2880 Mbps + 2880 Mbps + 688 Mbps†

Low-Latency Gaming

4K-QAM and MU-MIMO supported†

Cutting-Edge Bluetooth 5.4

Bluetooth 5.4 enhances reliability and security⁸

Highlights



Incredibly Smooth Wi-Fi Experience

Wi-Fi 7 unlocks the full potential of the 6 GHz band, providing congestion-free channels exclusive to your desktop. Enhanced by 4K-QAM and Multi-RUs, TBE400E delivers astonishing transmission efficiency, facilitating instant multi-stream media playback and massive online games. †



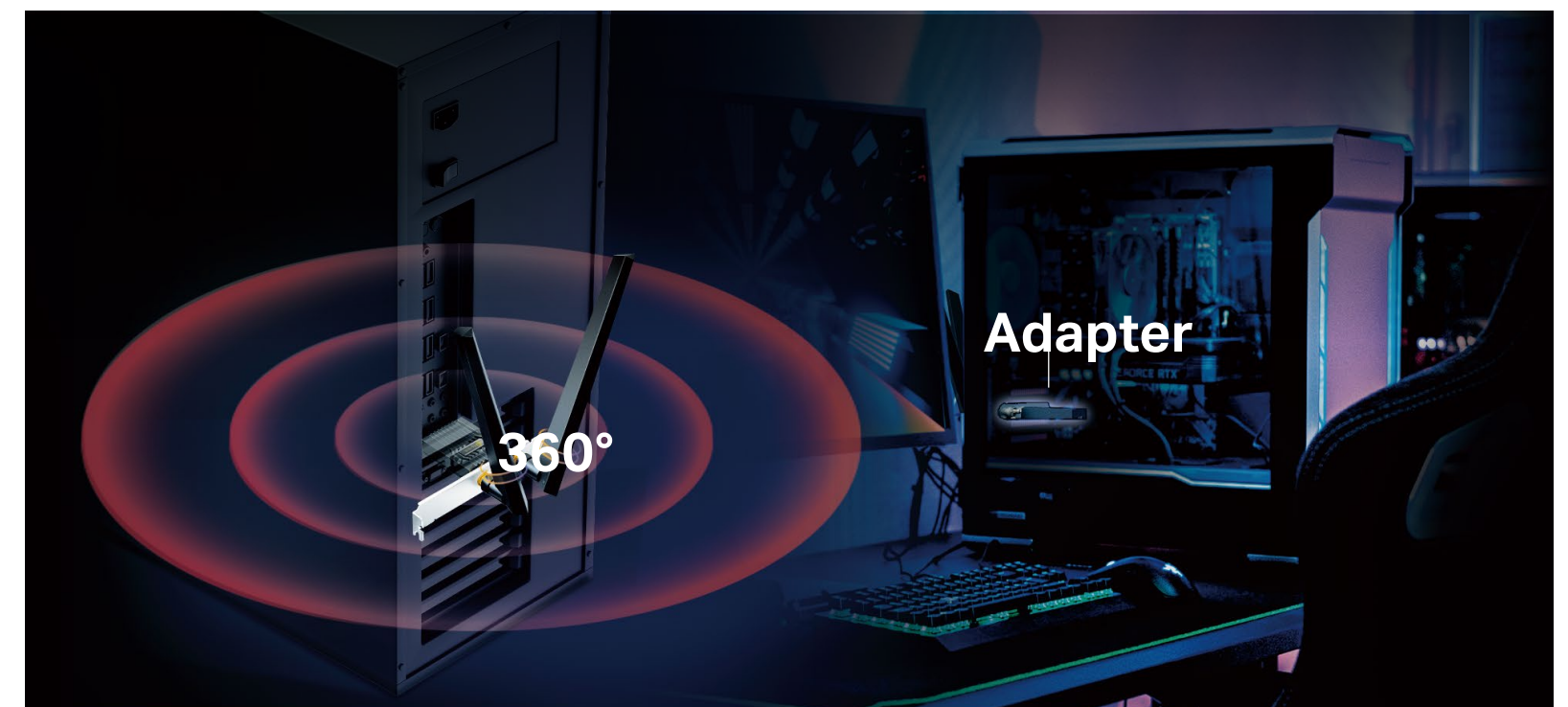
Broader Coverage

Two powerful signal-boosting, high-performance antennas ensure stronger signal transmissions and reception to greatly extend existing Wi-Fi coverage, offering a fast, smooth online experience from farther away.

6 GHZ  **2880 Mbps**

5 GHZ  **2880 Mbps**

2.4 GHZ  **688 Mbps**



Highlights

Bluetooth 5.4

Cutting-edge Bluetooth 5.4 offers enhanced reliability and security, ensuring seamless interoperability with game controllers, keyboards, and more. The newly upgraded BLE (Bluetooth Low Energy) significantly reduces power consumption.⁵



Refined Security

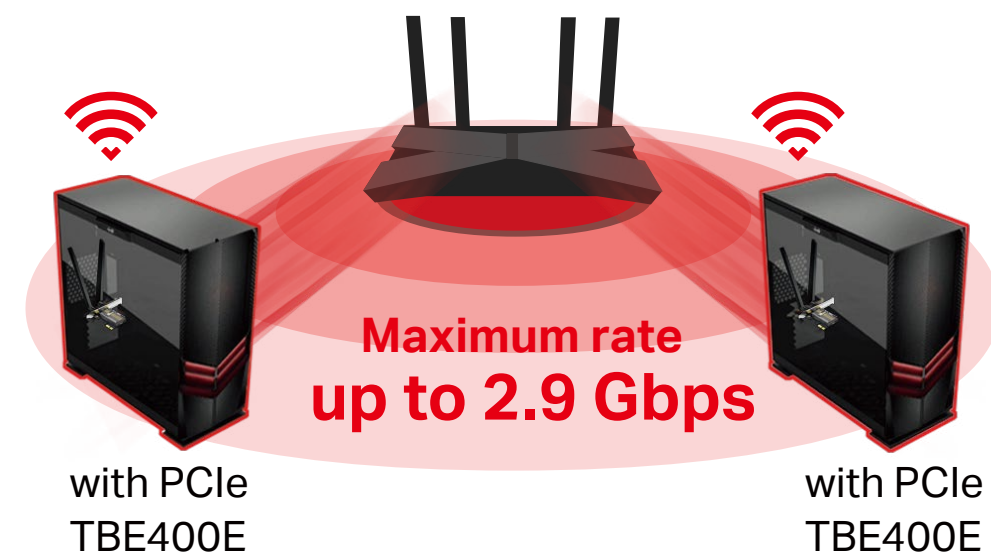
The latest Wi-Fi security protocol, WPA3, brings new capabilities to improve cybersecurity. More secure encryption in Wi-Fi password safety and enhanced protection against brute-force attacks combine to safeguard your home Wi-Fi.**



Highlights

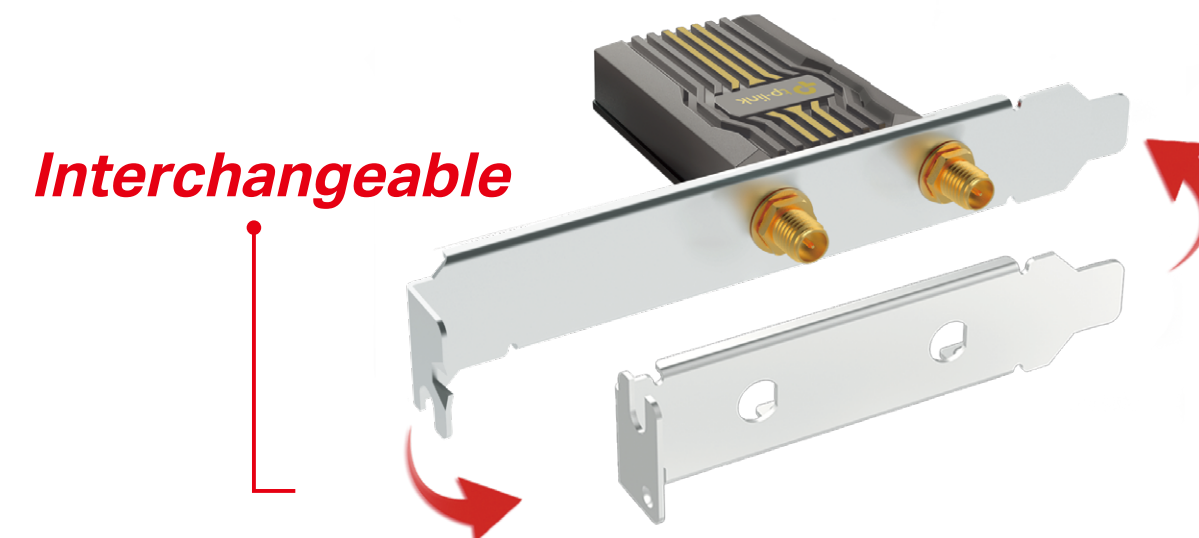
Superior Wi-Fi Reception

Bring your PC's Wi-Fi reception to the next level and take full advantage of your Wi-Fi 7 router. Archer TBE400E delivers faster and clearer Wi-Fi thanks to its equipped OFDMA and MU-MIMO technology.‡



Low-Profile Bracket

In addition to the full-height bracket, a low-profile bracket is also provided for mini tower computer cases. These customized options give you the flexibility to find a bracket that fits your board design perfectly.



Specifications

WLAN Features

- Wireless Standards: IEEE 802.11 a/b/g/n/ac/ax/be

- Signal Rate:

6 GHz:

11be: Up to 2880 Mbps(dynamic)

11ax: Up to 2402Mbps(dynamic)

5 GHz:

11be: Up to 2880 Mbps(dynamic)

11ax: Up to 2402 Mbps(dynamic)

11ac: Up to 1732 Mbps(dynamic)

11n: Up to 300 Mbps(dynamic)

11a: Up to 54 Mbps(dynamic)

2.4 GHz:

11be: Up to 688 Mbps(dynamic)

11ax: Up to 574 Mbps(dynamic)

11n: Up to 300 Mbps(dynamic)

11g: Up to 54 Mbps(dynamic)

11b: Up to 11 Mbps(dynamic)

- Reception Sensitivity:

6 GHz:

11ax HE20 MCS0: -94 dBm

11be EHT320 MCS13: -44dBm

5 GHz:

11ac VHT20 MCS0: -94 dBm

11be EHT160 MCS13: -48dBm

2.4 GHz:

11n HT20 MCS0: -95 dBm

11be EHT40 MSC13: -56dBm

- Transmit Power:

2.4 GHz: 24dBm(FCC) (EIRP)/ 20dBm(CE) (EIRP)

5 GHz: 24dBm(FCC) (EIRP) /20dBm(CE) (EIRP)

6 GHz: 20dBm(FCC) (EIRP) /20dBm(CE) (EIRP)

- Wireless Modes: Infrastructure mode

- Wireless Security: WPA/WPA2/WPA3, WPA-PSK/WPA2-PSK*

Specifications

Hardware

- Antennas: 2× High-Performance Tri-Band Antennas
- Dimensions (without the antenna base): 4.8 × 3.09 × 0.85 in (120.8 × 78.5 × 21.5 mm)

Others

- Package Contents
 - Archer TBE400E
 - 2x High-Performance Tri-Band Antennas
 - Low-Profile Bracket
 - Bluetooth Header Cable
 - Quick Installation Guide
 - Resource CD
- Certification
 - FCC/CE/IC/NCC/JRF/VCCI/BSMI
- System Requirements
 - Supported operating systems: Windows 11(64-bit) only[§]
- Environment
 - Operating Temperature: 0°C~40°C (32°F ~104°F)
 - Storage Temperature: -40°C~70°C (-40°F~158°F)
 - Operating Humidity: 10%~90% non-condensing
 - Storage Humidity: 5%~90% non-condensing



For more information, please visit

https://www.tp-link.com/products/details/?model=Archer+TBE400E_V1

or scan the QR code left

©2024 TP-Link

[†]Maximum wireless signal rates are the physical rates derived from IEEE Standard 802.11 specifications. Actual wireless data throughput and wireless coverage are not guaranteed and will vary as a result of network conditions, AP limitations, and environmental factors, including building materials, obstacles, volume and density of traffic, and AP location.

[‡]Use of Wi-Fi 7 (802.11be), Wi-Fi 6 (802.11ax), and other features including 160 MHz Bandwidth, 4K-QAM, Multi-RUs, OFDMA, MU-MIMO, and BSS Color requires the AP and PC OS to also support the corresponding features.

[§]Certain features of Archer TBE400E, such as Bluetooth 5.4, may be restricted on some computing systems and platforms. Please try to update the device's driver for feature compatibility.

[¶]The 160 MHz bandwidth may be unavailable in the 5 GHz band in some regions/countries due to regulatory restrictions.

^{*}Actual network speed may be limited by the rate of the product's PCI Express Interface, Ethernet WAN or LAN port, the rate supported by the network cable, internet service provider factors, operating system factors, and other environmental conditions.

^{**}Use of WPA3 requires APs to also support the corresponding feature.