

User Manual

Artist 22R Pro & 24 Pro

■ Safety Precautions

- ◆ This manual uses the following symbols to ensure that the XP-PEN Tablet is used correctly and safely. Be sure to read and observe the Safety Precautions.



- ◆ **Do not use this product in a control system area that requires a high degree of safety and reliability.**

- ◆ In such a system, this product could negatively affect other electronic devices and could malfunction due to the effect of those devices.



- ◆ **Turn the power off in areas where use of electronic devices is prohibited.**

- ◆ Turn the power off your tablet when onboard an aircraft or in any other location where use of electronic devices is prohibited, otherwise it may negatively affect other electronic devices in the area.

- ◆ Unplug the USB connector from this product and turn the power off.



- ◆ **Keep the product away from infants and young children.**

- ◆ Accessories to this gadget may present a choking hazard to small children. Keep all accessories away from infants and young children.



◆ CAUTION

- ◆ **Do not place this product on unstable surfaces.**

- ◆ Avoid placing this product on unstable, tilted surfaces or any locations exposed to excessive vibrations. This may cause the tablet to fall or impact surfaces which can result in damage and/or malfunction to the tablet.

- ◆ **Do not place heavy objects on top of this product.**

- ◆ Do not place heavy objects on the product. Do not step on, or place your body weight on this product as this may cause damage.



- ◆ **Avoid extreme high or low-temperature exposure to the XP-Pen tablet.**

- ◆ Do not store this product in areas that drop below 5°C or above 40°C. Avoid locations with excessive temperature fluctuations. This may result in damage to the product and its components.



- ◆ **Do not disassemble**

- ◆ Do not disassemble or modify this product. Doing so may expose you to heat, fire, electric shock and injury. Disassembling the product will void your warranty.



- ◆ **Do not use alcohol for cleaning**

- ◆ Never use alcohol, thinner, benzene or other mineral solvents that may discolor and cause deterioration to the product.



- ◆ **Do not expose to water**

- ◆ Be cautious of water and all liquids that may be near the tablet. Exposure to water or liquid could damage the product.



◆ CAUTION



- ◆ **Avoid placing metallic objects and especially magnetic objects on the tablet.**

- ◆ Placing metallic and/or magnetic objects on this product during operation may cause malfunction or permanent damage.
- ◆ **Do not strike the pen against hard objects.**
- ◆ Striking the pen against hard objects can cause damage to the pen.
- ◆ **Avoid gripping the pen too tightly, and DO NOT use excessive weight/pressure on the Express Key button and pen.**
- ◆ The stylus pen is a high-precision instrument. Avoid pressing too tightly on the Express Key button, and keep any objects from covering the pen to avoid potential damage. Keep the pen away from areas of high dust, contaminants, or any particulate matter that can effect or damage the pen.

◆ **Limitation of Liability**

- XP-Pen shall in no event be liable for damages resulting from fires or earthquakes, including those caused by third parties and those arising from user misuse, abuse or neglect.
- XP- Pen shall in no event be liable for incidental damages- including but not limited to loss of business income, interruption of business activities, corruption or loss of data – that arise from use or failure to use this product correctly.
- XP- Pen shall in no event be liable for damage resulting from uses not documented in this manual.
- XP- Pen shall in no event be liable for damages or malfunction arising from the connection to other devices or use of third party software.

Contents

I. Product Overview

Overview

II. Connecting the Artist 22R Pro & 24 Pro

III. Driver Installation

Windows

Mac

IV. Driver Settings UI

Windows

Mac

V. Driver Uninstall

Windows

Mac

VI. FAQ

Thank you for purchasing the XP-Pen Artist 22R Pro & 24 Pro. Our product user manual currently supports English, Russian, Japanese, German, Korean, Chinese, Italian, Spanish, French and Polish. We apologize if your preferred language is not supported.

{ I. Product Overview }

Overview

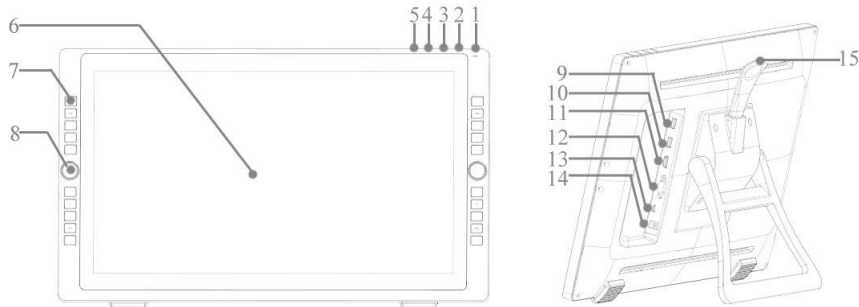


Image 1-1: Overview

1. Power button (Press and hold for about 3 seconds to turn on.)
 - a. On, Blue: The Artist 22R Pro & 24 Pro are connected to your computer and powered on.
 - b. On, Orange: The Artist 22R Pro & 24 Pro are powered on, but not connected to a computer.
 - c. Off: The Artist 22R Pro & 24 Pro are powered off.
2. Menu button
3. + button
4. – button
5. VGA auto adjustment button (back button for the 24 Pro)
6. Display/Working area
7. Express key
8. Roller key
9. USB port (USB Hub)
10. USB port (USB Hub)
11. HDMI port
12. VGA port (Artist 22R Pro only)
13. Type-C port
14. Power jack
15. Stand adjustment lever

{ II. Connecting the Artist 22R Pro & 24 Pro }

You can use the below methods to connect your Artist 22R Pro & 24 Pro to your computer.

- a. Connect the Artist 22R Pro & 24 Pro to your computer and wall outlet via included Type-C cable, power adapter, and power cord.

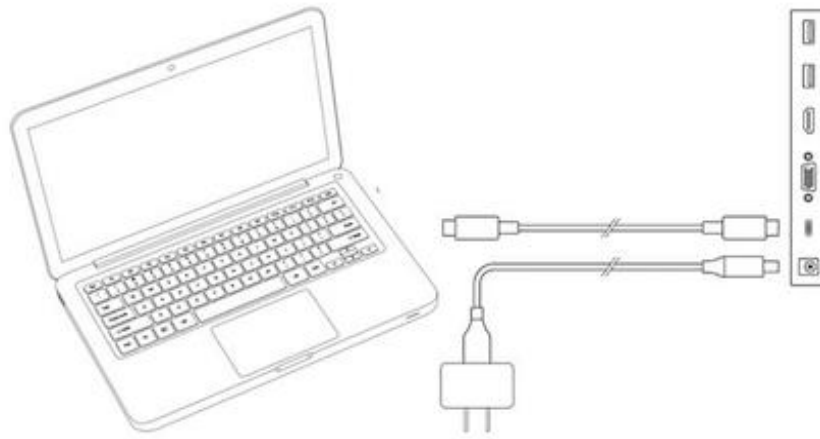


Image 2-1. Type-C connection

- b. Connect the Artist 22R Pro & 24 Pro to your computer and wall outlet via the included HDMI, “Type-C to USB cable” , power adapter, and power cord.

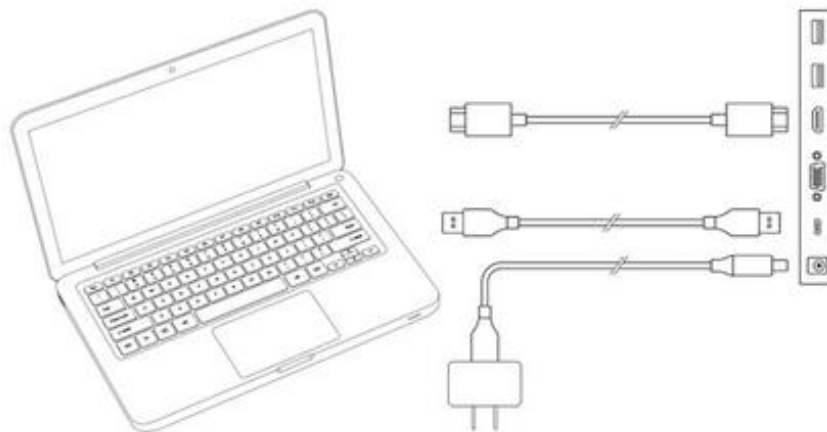


Image 2-2. HDMI connection

- c. Artist 22R Pro only: Connect the Artist 22R Pro to your computer and wall outlet via the included VGA, “Type-C to USB cable” , power adapter, and power cord.

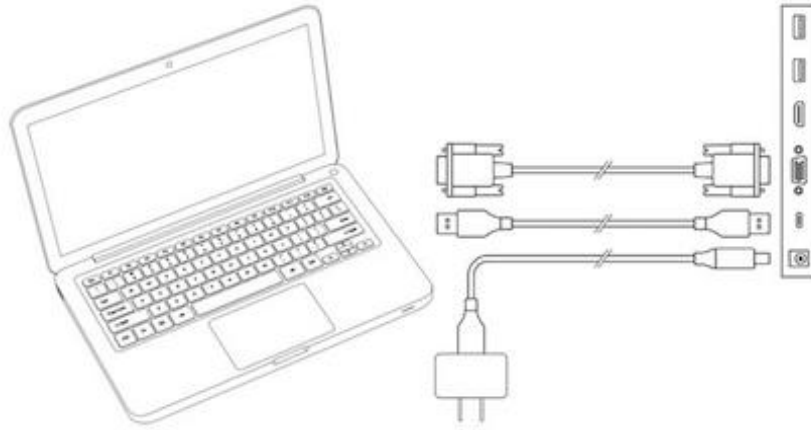


Image 2-3. VGA connection (Artist 22R Pro only)

Notes:

- a. You must connect the Artist 22R Pro & 24 Pro' s Type-C port to your computer. The top 2 USB ports can connect to other USB devices like flash, keyboard, etc.
- b. If your computer is a desktop, please connect the Artist 22R Pro & 24 Pro HDMI or VGA cable into the same video card as your general monitor.

{III. Driver Installation}

Supported operating systems:


Windows 10, 8 or 7

Mac OS X 10.10 or above

NOTES:

- (1). Disable any antivirus or firewall software and close any non-essential background software before beginning the installation. Some software, such as OneDrive and Dropbox, may monopolize important files and prevent a successful installation. On Windows computers, check the system tray on the bottom-right of the screen and close any software unrelated to your computer hardware.
- (2). Uninstall any existing software before attempting to install the Artist 22R Pro & 24 Pro' s drivers. Other drivers may conflict with the Artist 22R Pro & 24 Pro' s drivers or prevent installation entirely.
- (3). Visit the XP-Pen official website and then download and install the latest driver for your graphics tablet . When the download is complete, be sure to extract the “.zip” file contents before running “.exe” or “.pkg.”
- (4). The Artist 22R Pro resolutions are 1920x1080 (max.) and Artist 24Pro resolution are 2560x1440 (max.).

Windows

- (1). Plug the Type-C and HDMI or VGA cables into your computer’ s Type-C, HDMI, VGA and USB ports first, then connect the power adapter and power cord into your Artist 22R Pro & 24 Pro and wall outlet.
- (2). Download the latest driver version from the XP-PEN website (www.xp-pen.com) and be sure to extract the “.zip” file contents onto your desktop before running “.exe” .
- (3). After installation, the driver’ s icon () will appear in your system tray. If the icon is not present, uninstall the driver, reboot, and repeat step 2.
- (4). Right click your desktop and choose “Display Settings” . Then set monitors “Size to text, apps, etc.” to 100%.

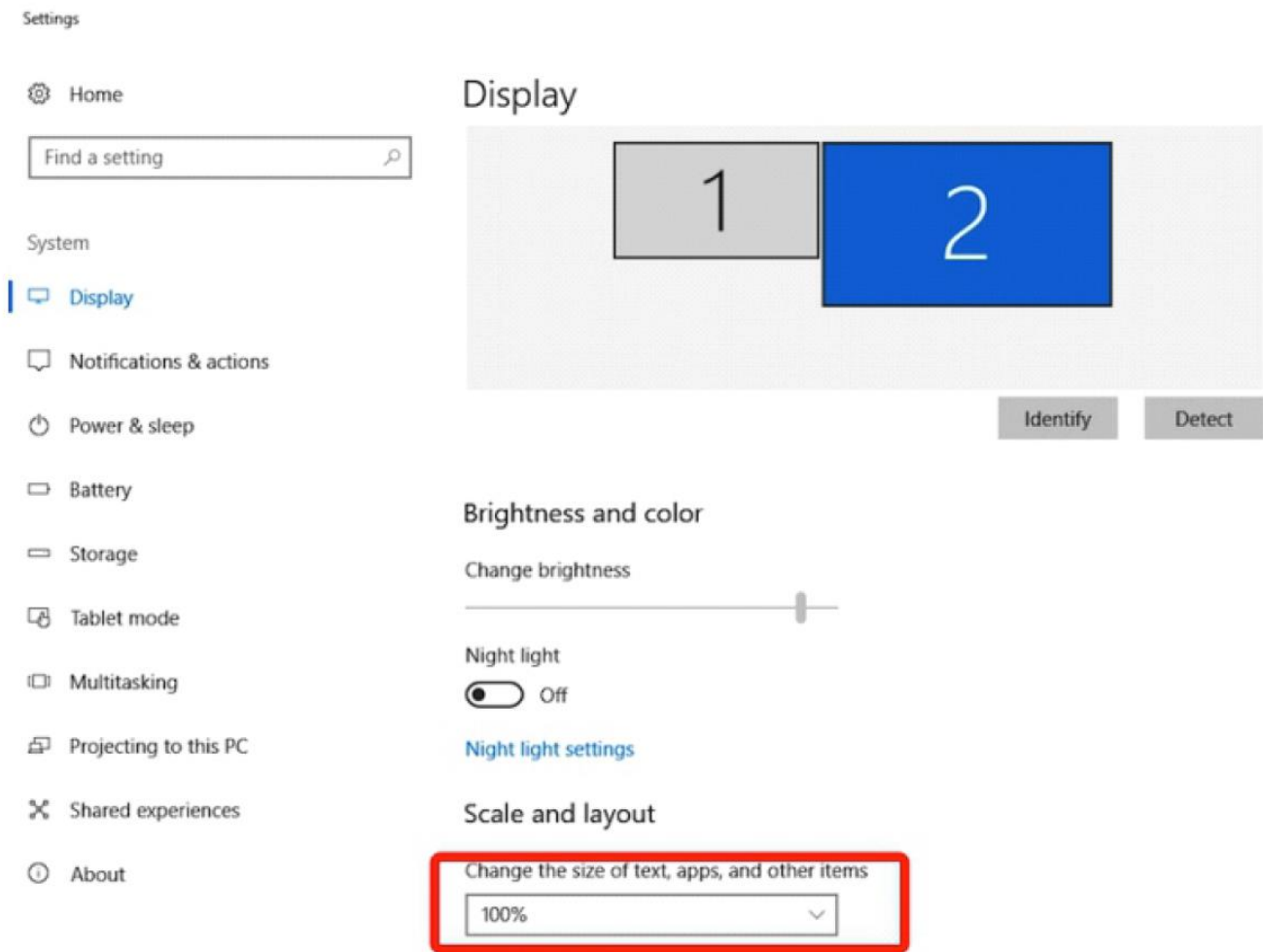


Image 3-1. Display setting

- (5). On the display setting, you can set your monitors to “Extend these displays” or “Duplicate these displays” .
- (6). In Extend mode, set your Artist 22R Pro & 24 Pro to Monitor 2 and choose a resolution of 1920x1080 or 2560x1440.
- (7). In Duplicate mode, set both of your monitors to the same resolution.

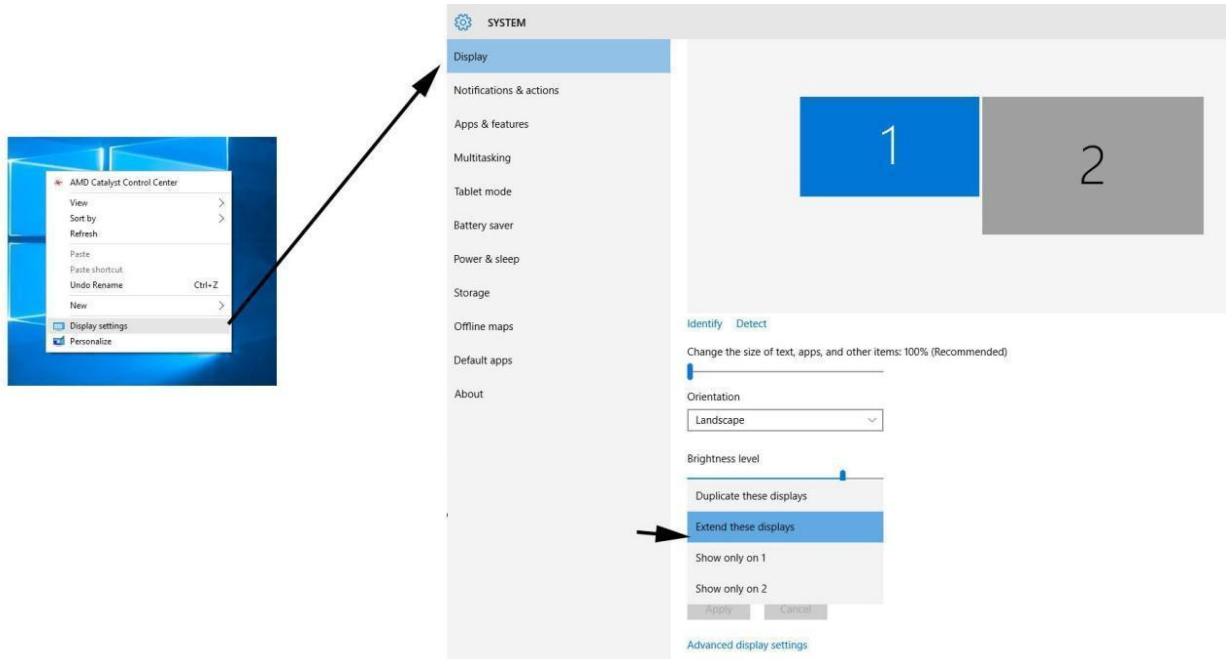


Image 3-2. Extend these displays

(8). Click “OK” to exit.

(9). Double-click the graphics tablet driver’s system tray icon to open your graphics tablet settings. Set your Artist 22R Pro & 24 Pro’s “Current Screen” to Monitor 1 or 2, then apply and exit.

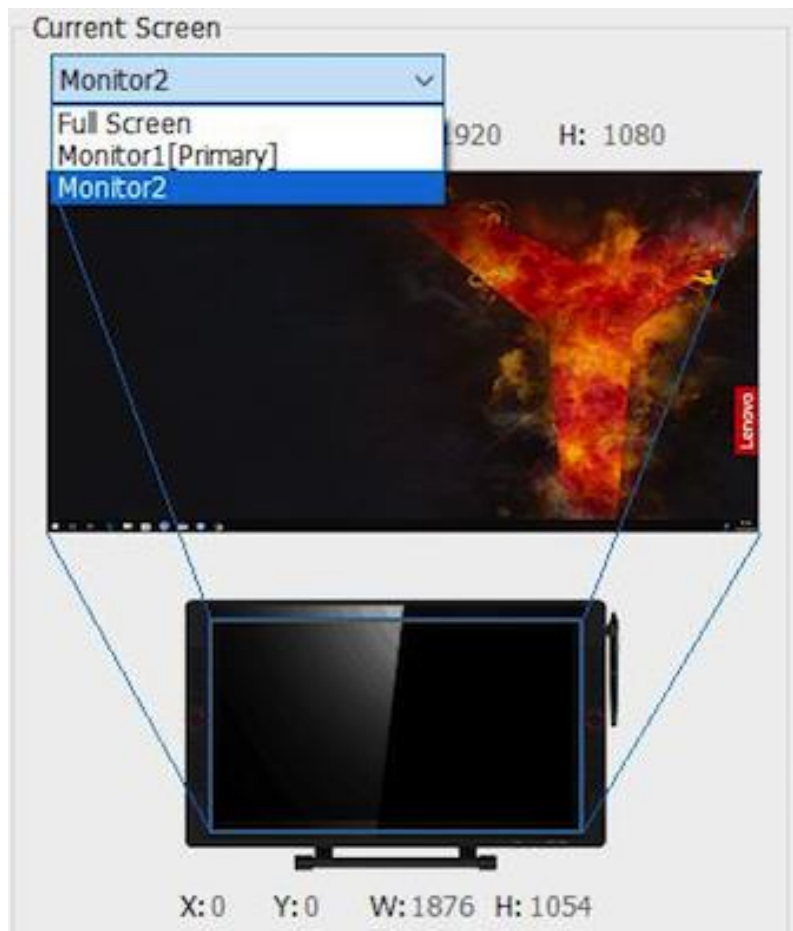


Image 3-3. Current Screen

Mac

- (1). Plug the Type-C, HDMI or VGA cables into your computer Type-C, HDMI, VGA or USB ports first then connect power adapter and power cord into your Artist 22R Pro & 24 Pro and wall outlet.
- (2). Download the latest driver version from the XP-Pen website (www.xp-pen.com) and extract the “.zip” file contents onto your desktop before running “.pkg” .



Image 3-4. Driver

- (3). Follow the on-screen instructions until installation is complete.
- (4). Open “System preferences” – “Display” and then set Resolutions to “Default for display” .

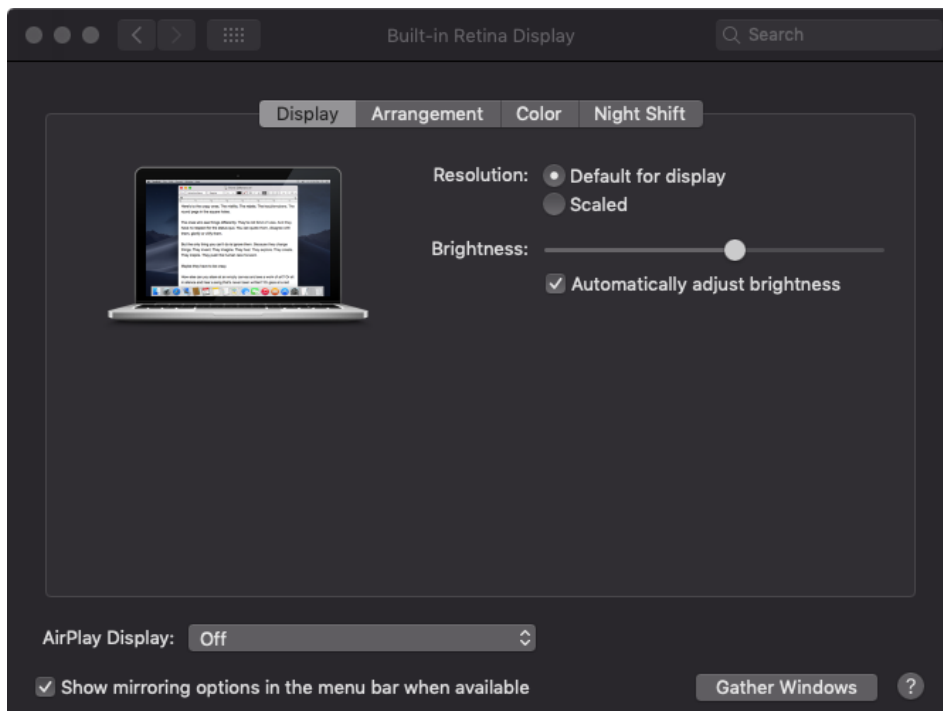


Image 3-5. Display

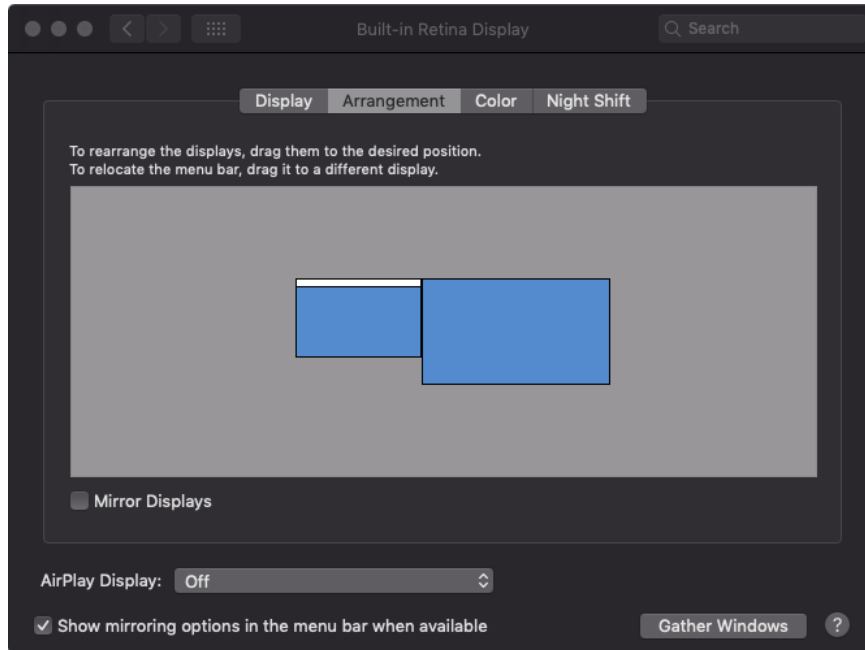


Image 3-6. Arrangement

(5) In the Arrangement tab, you may choose to Mirror Displays. With Mirror Displays enabled, both monitors' resolutions should be the same.

(5.1) Open “Finder” – “Applications” – “Pen tablet” – “Pen tablet Setting” .

(5.2) In the Monitor tab, set Monitor Mapping to iMac/Color LCD.

(6) With Mirror Displays disabled, set your Artist 22R Pro' s resolution to 1920x1080, Artist 24 Pro' s resolution to 2560x1440.

(6.1) Open “Finder” – “Applications” – “Pen tablet” – “Pen tablet Setting” .

(6.2) In the monitor tab, set Monitor Mapping to Artist 22R Pro & 24 Pro.

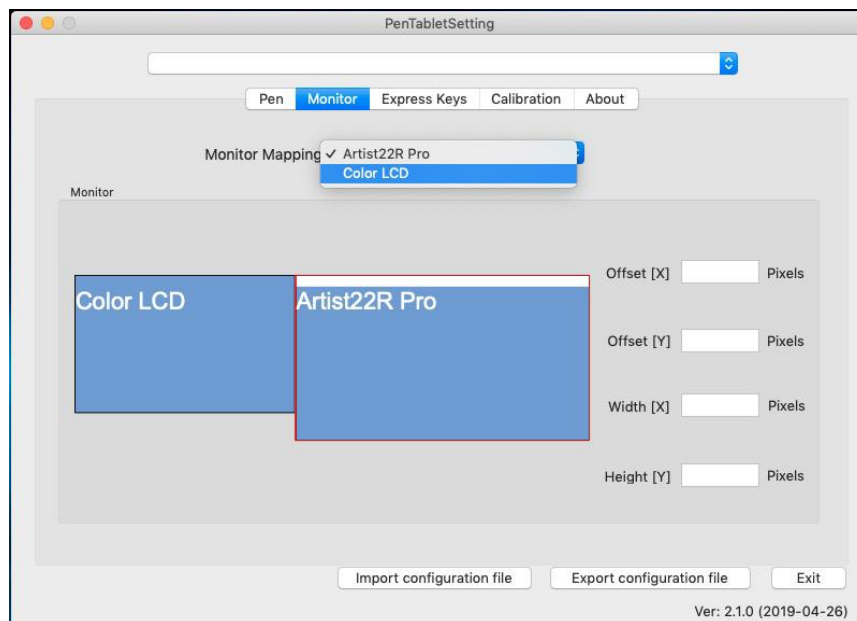


Image 3-7. Monitor

{ IV. Driver Settings UI }

Windows

Double-click the driver's icon () in the system tray.

Driver UI

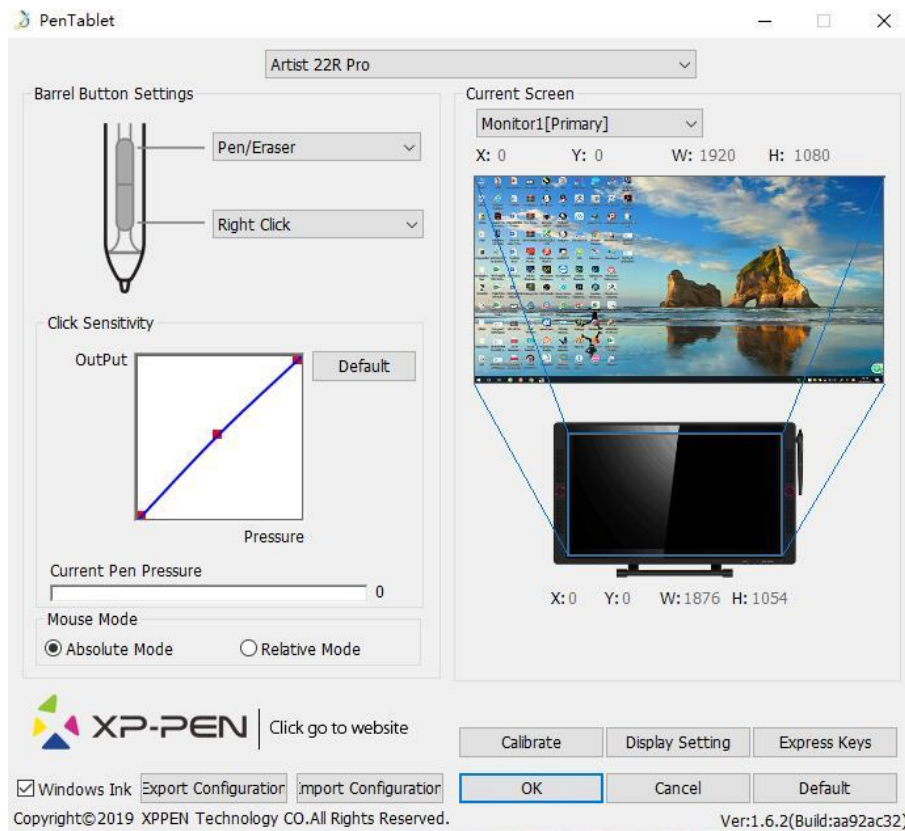


Image 4-1. UI

1.1. Pen Function Settings

You may customize the functions of your graphics tablet pen's barrel buttons here. Use the "Function Key" option to program custom keystrokes.

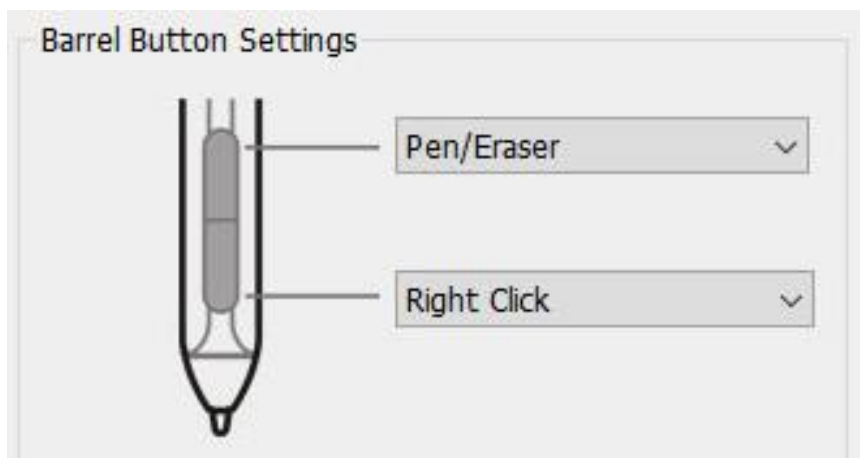


Image 4-2: Pen Functions Setting

Note:

Pen/Eraser Toggle

With the stylus in range of the Artist 22R Pro & 24 Pro’ s working area, press the assigned barrel button to toggle between pen and eraser modes in compatible drawing software. The current mode will be displayed briefly on your monitor.

1.2. Click Sensitivity & Current Pen Pressure

You can adjust pen pressure to “Output” or “Press” sensitivity on here.

Current Pen Pressure shows the current pressure level being exerted on your graphics tablet and can be used to test pen pressure.

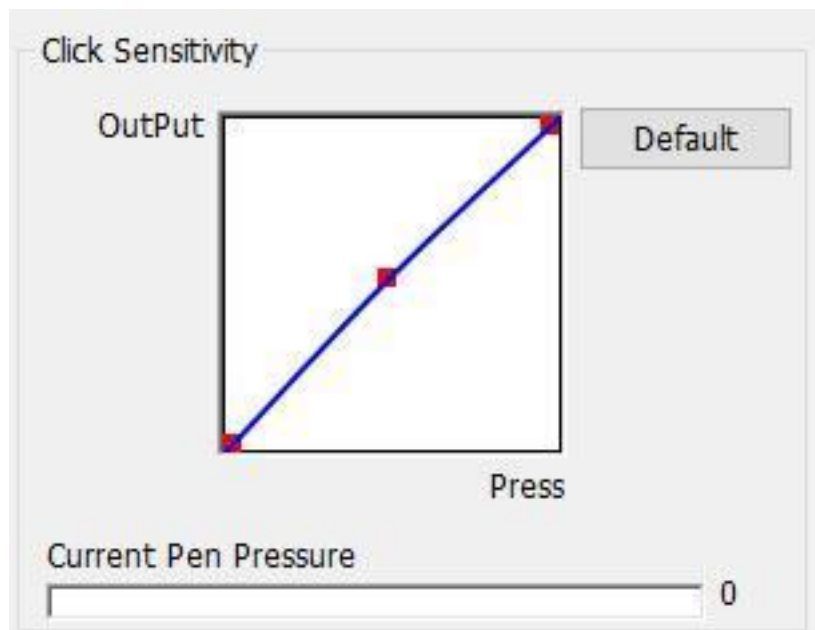


Image 4-3. Click Sensitivity & Current Pen Pressure

1.3. Mouse Mode

Absolute (Pen) Mode: Standard graphics tablet mode; Each point of the graphics tablet’ s work area corresponds to an absolute point on your computer display.

Relative (Mouse) Mode: Mouse mode; The graphics tablet’ s work area does not correspond to absolute points on your computer display and your pen works as a standard mouse.

Note:

Artist 22R Pro & 24 Pro is a graphic tablet monitor so please set it to Absolute mode to avoid stylus and cursor offset issue.

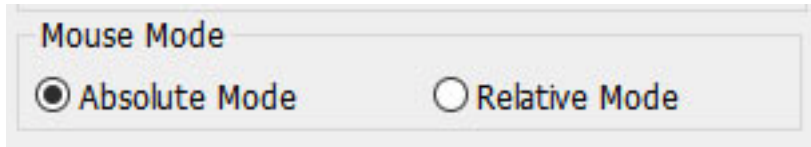


Image 4-4: Mouse Mode

1.4. Current Screen

The Artist 22R Pro & 24 Pro may be configured for use with single or dual monitors. Generally, this should be set to “Monitor 1” or Monitor 2.”



Image 4-5. Current Screen

1.5. Import & Export Profiles

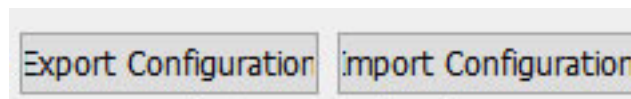


Image 4-6. Export & Import

You can use the Import & Export Profile function to save/load your barrel buttons and shortcut keys setting.

Note:

When you finish setting up your barrel buttons and shortcut keys, click the OK button to save and exit the graphics tablet settings menu. Open graphics tablet setting again and click Export Configuration.

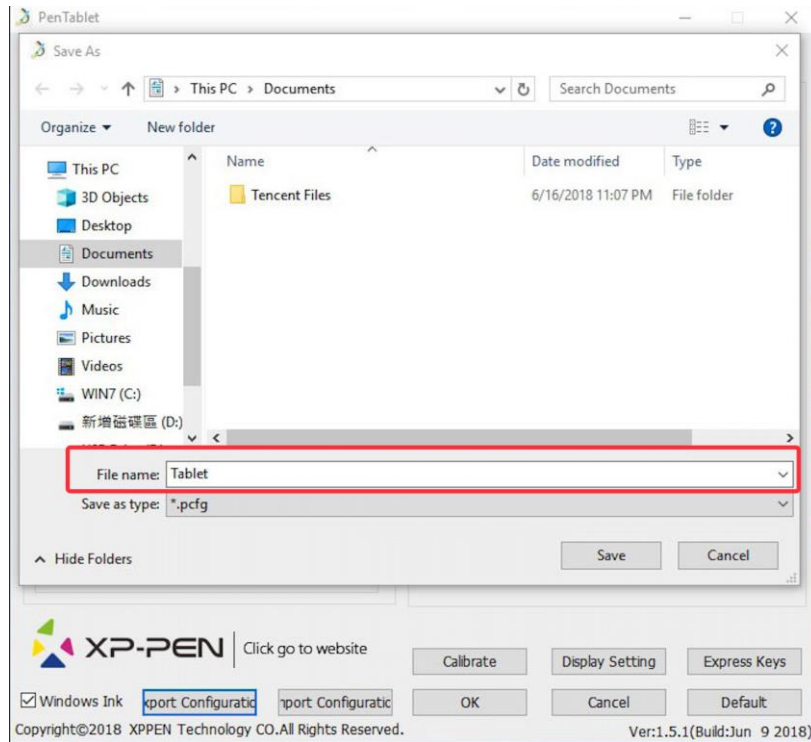


Image 4-7. Export Profile

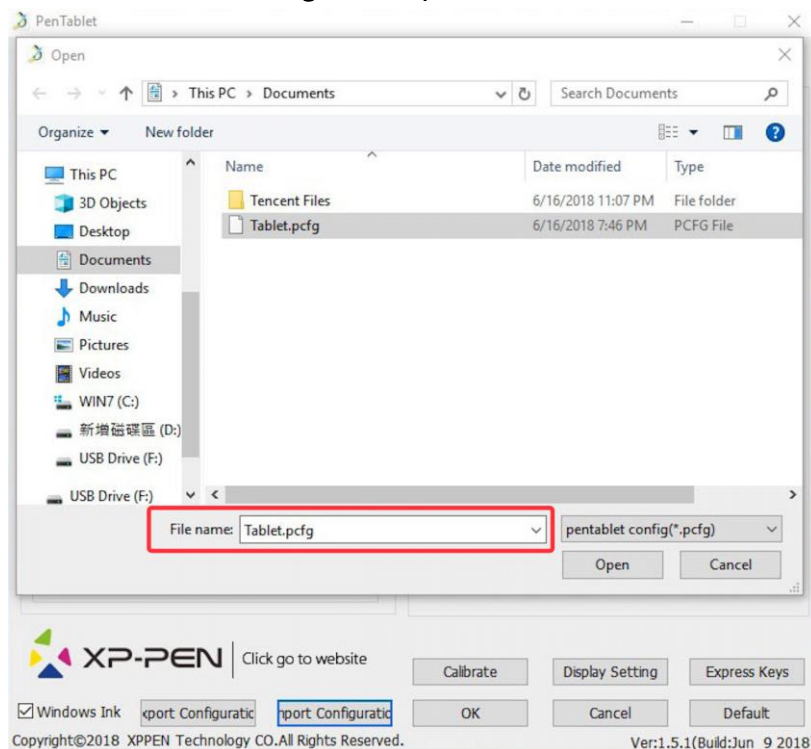


Image 4-8. Import Profile

1.6. Windows Ink

This capability can be toggled on and off here. Enabling this will allow support for Windows Ink and applications that run using Windows Ink.



Image 4-9. Windows Ink

1.7. Calibration

The Calibration tab allows you to set up calibration for your graphics tablet .

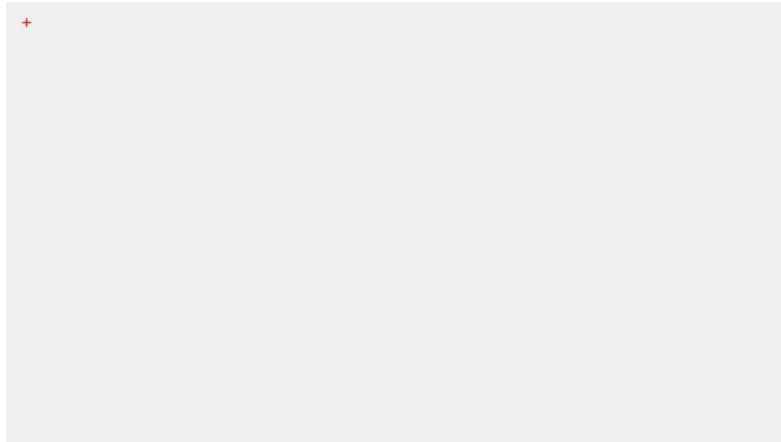


Image 4-10. Calibration

1.8. Display Setting

- a. Color Temperature: Use to adjust the Artist 22R Pro & 24 Pro' s color balance.
- b. User: Use to adjust red, green, and blue color levels on the Artist 22R Pro & 24 Pro' s display. Brightness and contrast can also be adjusted here.
- c. Rotate: You may rotate the Artist 22R Pro & 24 Pro' s display in this tab.

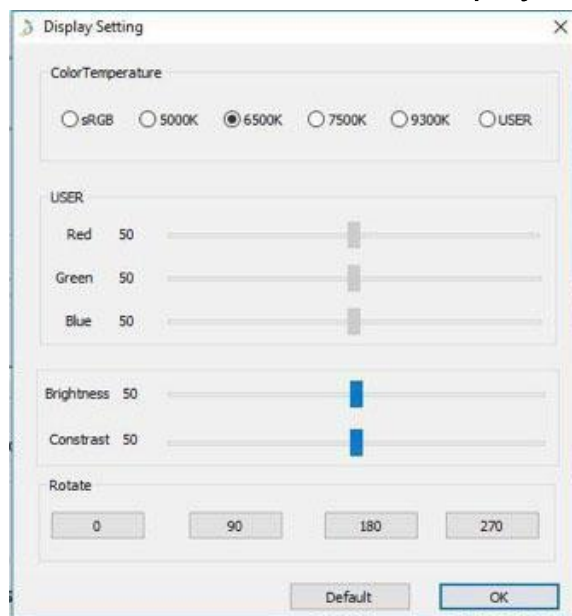


Image 4-11. Display Setting

Note:

- a. When you set the rotate function, you must also rotate your Artist 22R Pro & 24 Pro.
- b. You must set the Artist 22R Pro & 24 Pro to Extend These Displays first, after which you can change the rotation.

1.9. Express Keys Setting

Notes:

- (a). The Artist 22R Pro & 24 Pro' s shortcut keys are designed to work with US English keyboards. Keys may not function correctly with the other keyboard languages.
- (b). By default, the Artist 22R Pro & 24 Pro express keys are mapped to standard Photoshop keyboard shortcuts. Keys can be customized to function efficiently in other software.
- (c). You must set one express key from the Switch function to switch dial.

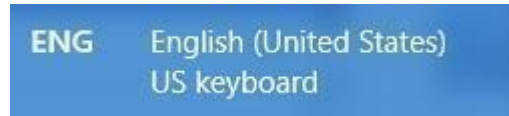


Image 4-12. Keyboard

Disable express keys: When you enable it, all of the express key functions will be disabled.

Hide hints: When you enable it and press any express key, the message will not popup on the bottom of your screen.

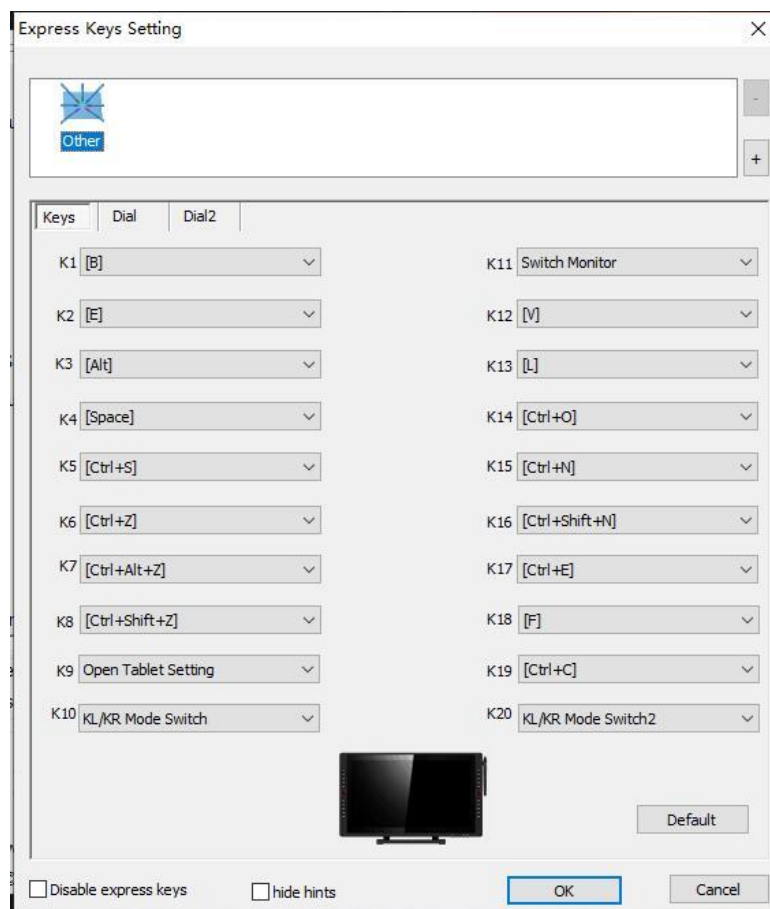


Image 4-13. Keys

You may edit the functions of the Artist 22R Pro & 24 Pro' s shortcut keys. Use the “Definition” option to program custom keystrokes.

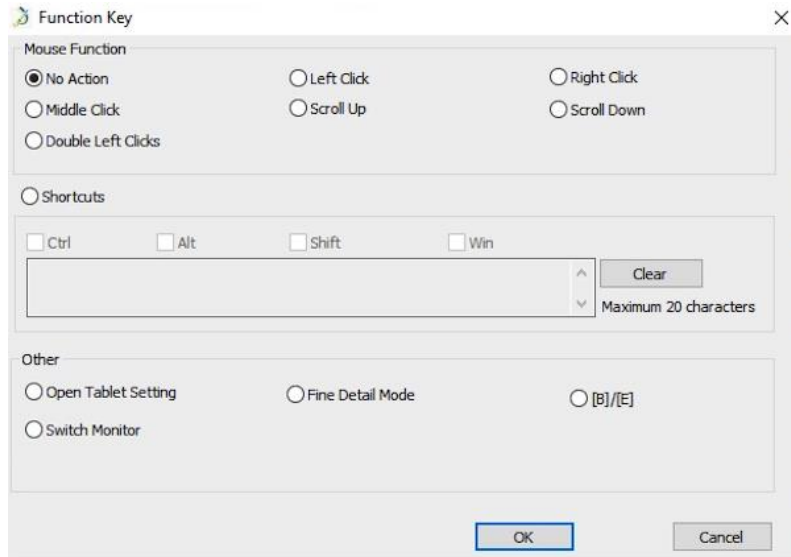


Image 4-14. Function Key

Note:

Find Detail Mode allow your Artist 22R Pro & 24 Pro work area to focus on the small size scope to do detail drawing & editing.

You can set each shortcut key for different software.

a. Click the “+” button to go to Select Program tab.

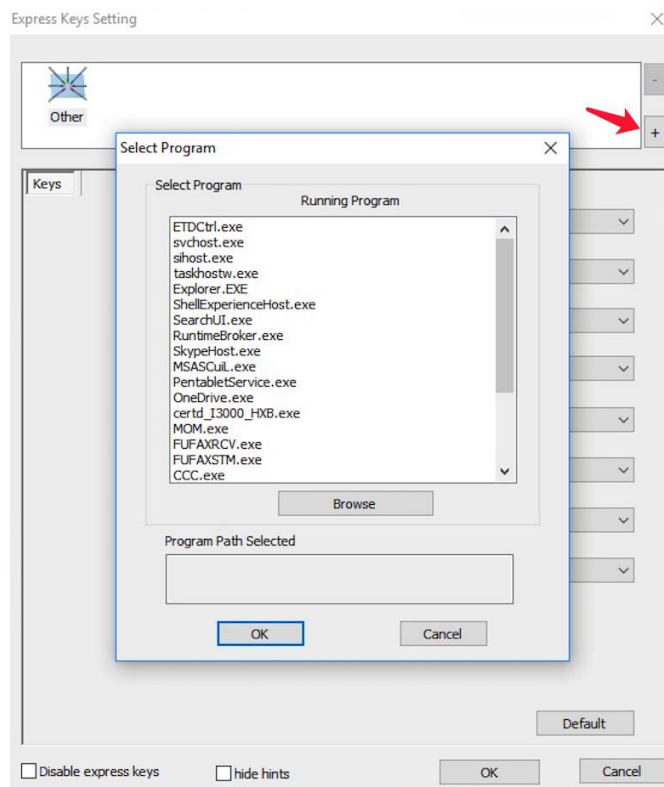


Image 4-15. Select Program

b. You can choose Default or use Browse to select your choice of software.

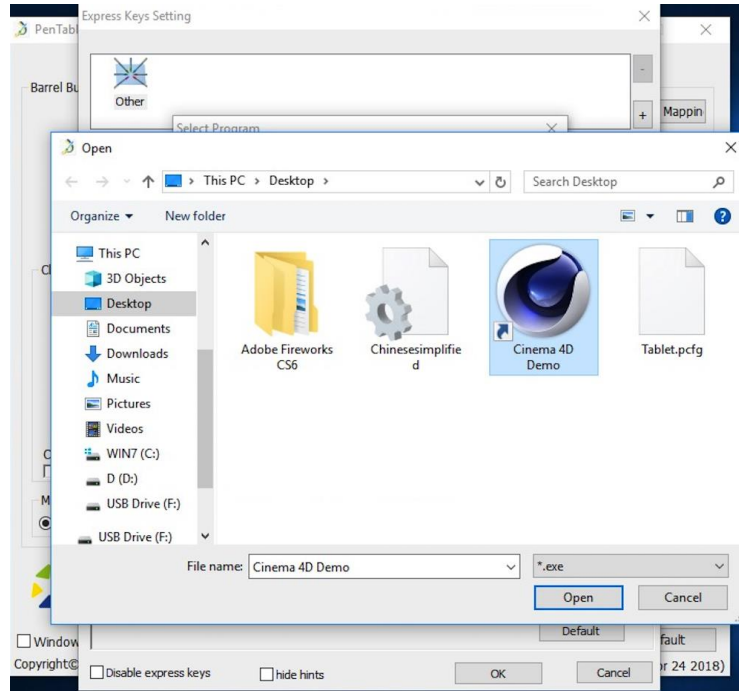


Image 4-16. Select Program

c. Return to the shortcut key settings tab, click the graphics tablet icon, and then customize the shortcut keys. When you are finished, click the OK button and exit the graphics tablet settings menu.

You can set each Dial 1 & 2 for different software.

a. Click software icon first then go to Dial 1 & 2 tab.

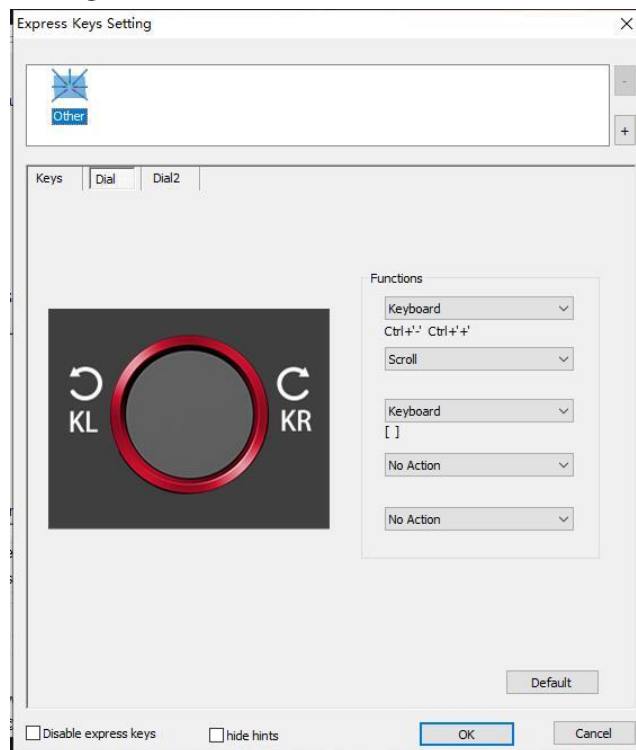


Image 4-17. Dial

b. Click each dial function to “Function key” .

c. On the setting tab, you can customize “KL” and “KR” to different shortcuts like Ctrl+ & Ctrl-.

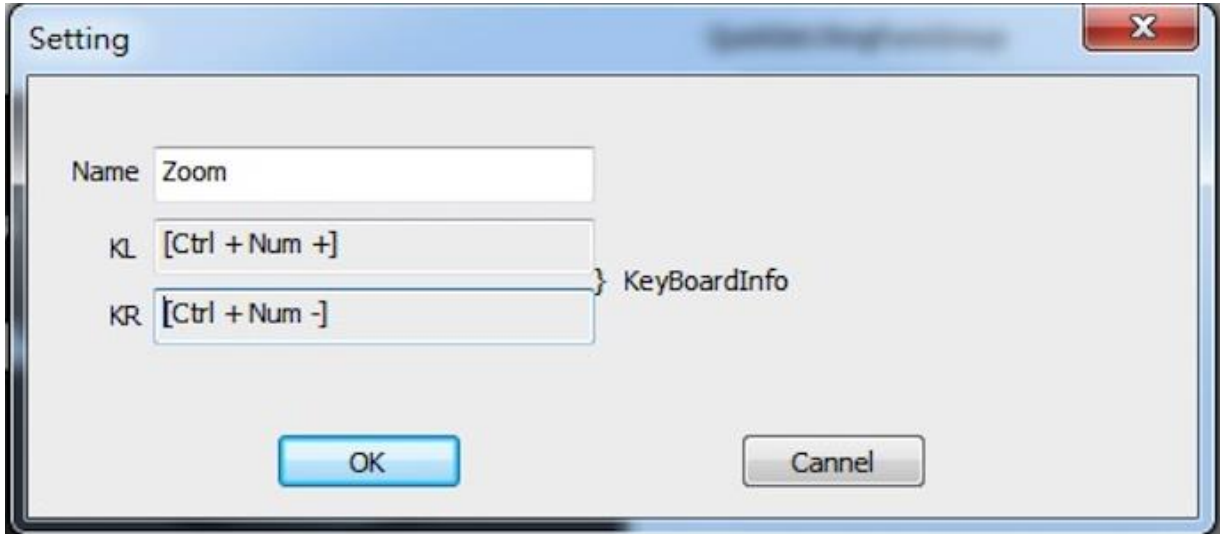


Image 4-18. Setting

1.0. Default

You can click the Default button to restore default settings.

1.11. XP-Pen Logo

Click our logo to visit our website.



Image 4-19. XP-Pen logo

Mac

To open the Artist 22R Pro & 24 Pro’ s driver settings, open Finder - Applications - Pen tablet Setting.

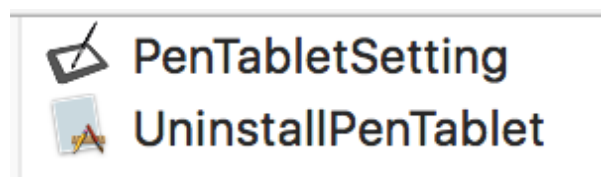


Image 4-20. graphics tablet Setting

1.1. Pen

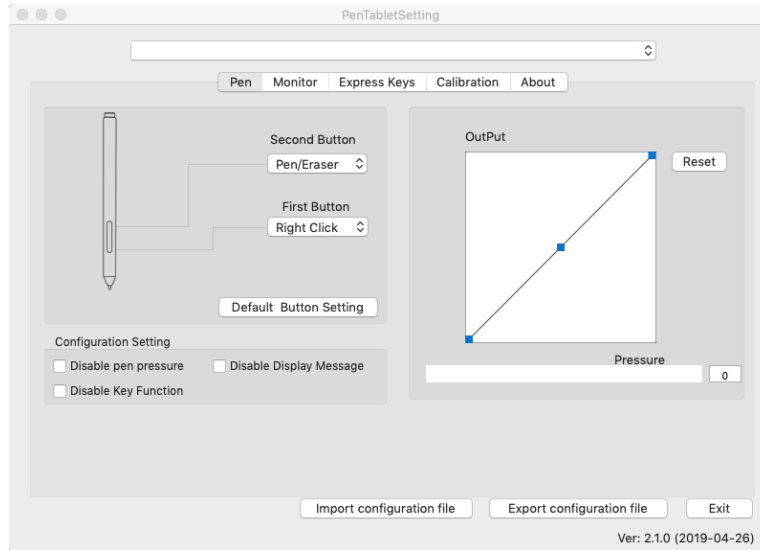


Image 4-21. Mac UI

- a. In this tab, you may customize the functions of your stylus' barrel buttons, adjust pressure sensitivity, and test your pen pressure.
- b. Click “Default Button Setting” to revert to manufacturer settings.

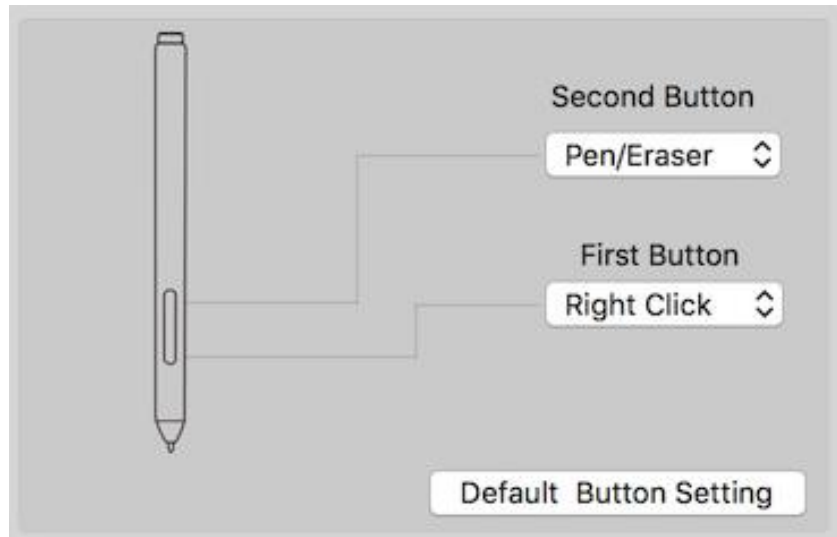


Image 4-22. Pen

Note:

Pen/Eraser Toggle

With the stylus in range of the Artist 22R Pro & 24 Pro' s working area, press the assigned barrel button to toggle between pen and eraser modes in compatible drawing software. The current mode will briefly be displayed on your monitor.

- c. Disable pen pressure: When the “Disable pen pressure” function is enabled, you can disable the pen pressure function.
- d. Disable Key Function: When you enable it, all of the express keys function will be disabled.
- e. Disable Display Message: When you enable it and press any express key, the message will not popup on the bottom of your screen.

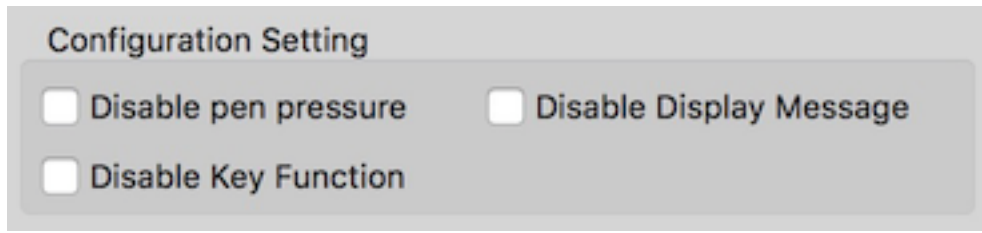


Image 4-23. Configuration Setting

- f. Output: You can adjust pen pressure to “Output” or “Press” sensitivity on here. It shows the current pressure level being exerted on your graphics tablet and can be used to test pen pressure.

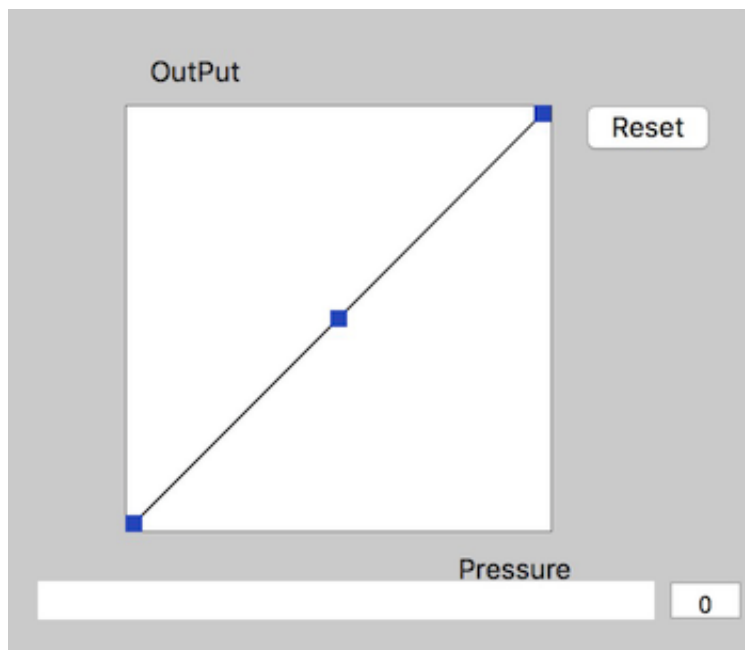


Image 4-24. Output

- g. Import & Export Profiles: You can use the Import & Export Profile function to save/load your barrel buttons and shortcut keys setting.



Image 4-25. Import & Export Profiles

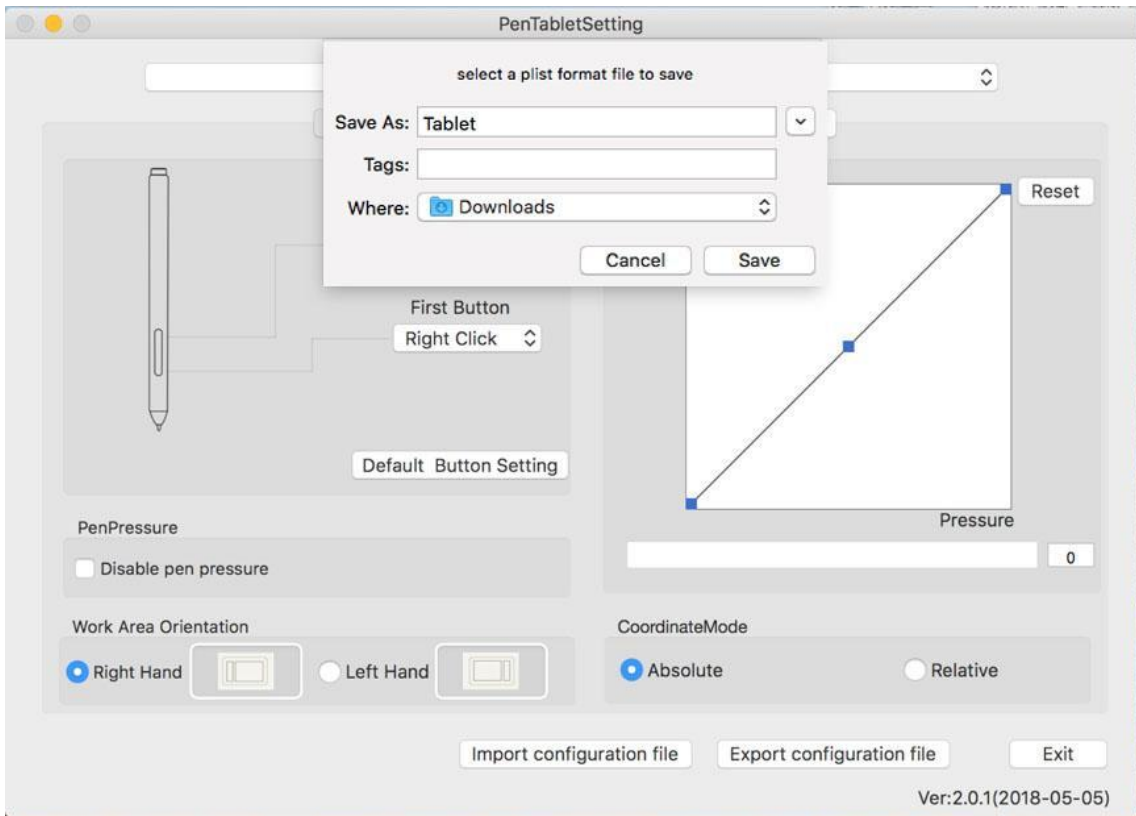


Image 4-26. Export configuration file

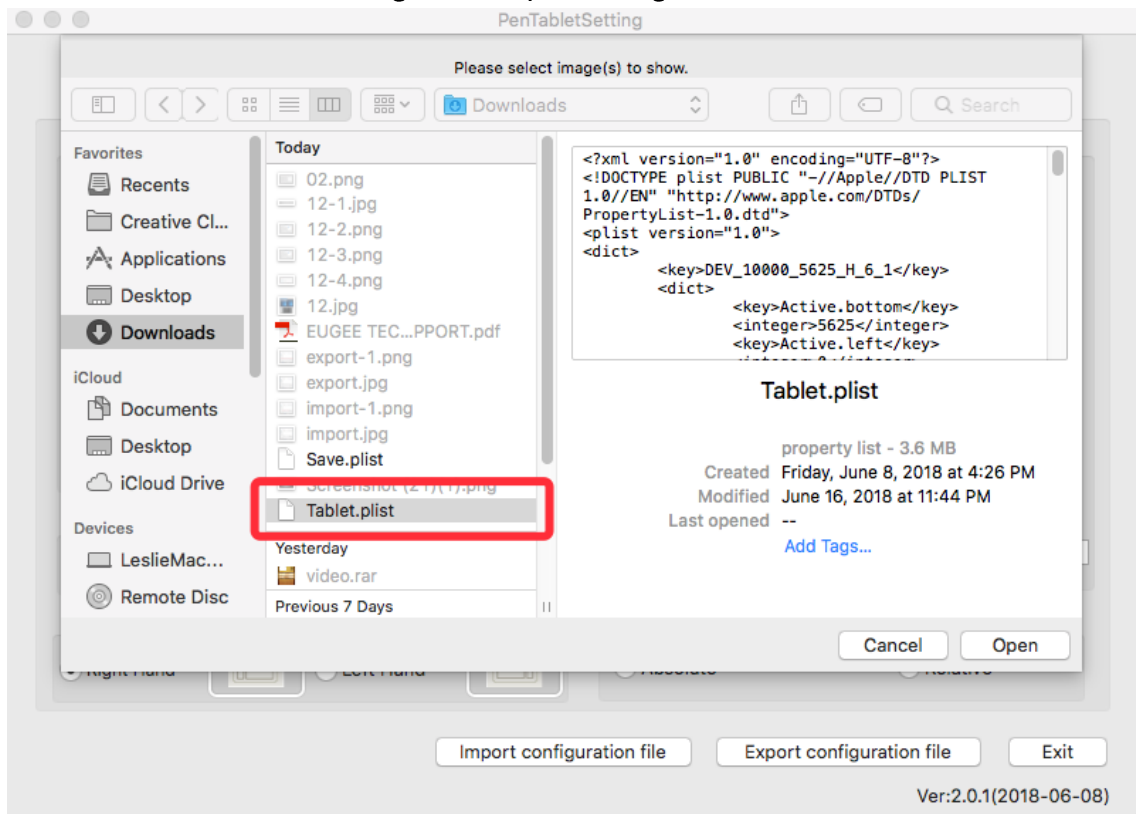


Image 4-27. Import configuration file

1.2. Monitor

The “Monitor” tab allows you to configure your Artist 22R Pro & 24 Pro to monitor1 or monitor2.

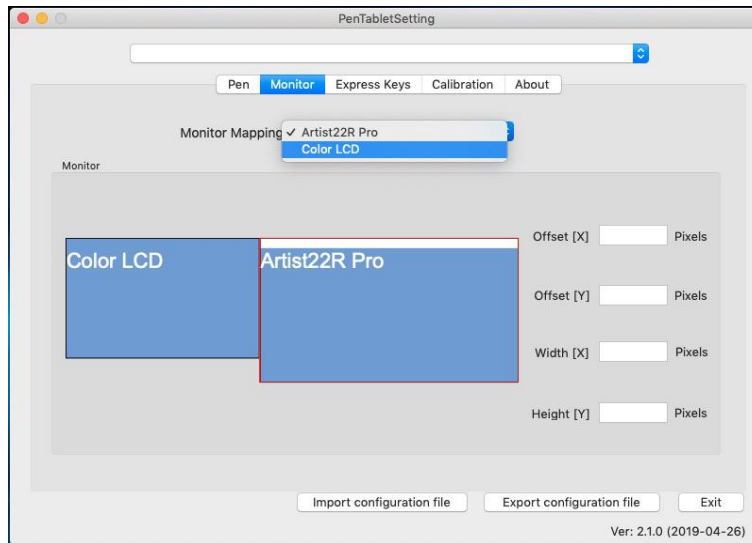


Image 4-28. Monitor

1.3. Express Keys

Notes:

- (a). The Artist 22R Pro & 24 Pro' s shortcut keys are designed to work with US English keyboards. Keys may not function correctly with the other keyboard languages.
- (b). By default, the Artist 22R Pro & 24 Pro express keys are mapped to standard Photoshop keyboard shortcuts. Keys can be customized to function efficiently in other software.
- (c). You must set one of the express keys from Switch function to switch dial.

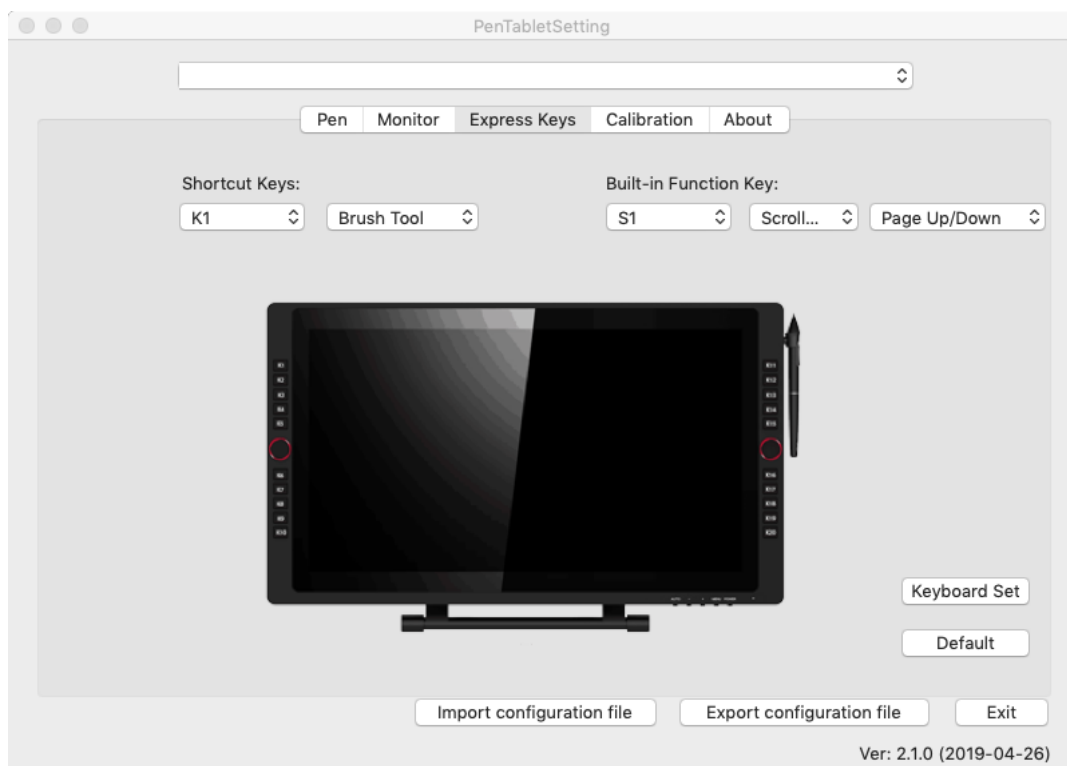


Image 4-29. Express Keys

In the Express Keys tab, you may choose your preferred functions for the Artist 22R Pro & 24 Pro’ s shortcut keys. Use the “Reset Customer Defined” option to program custom keystrokes.

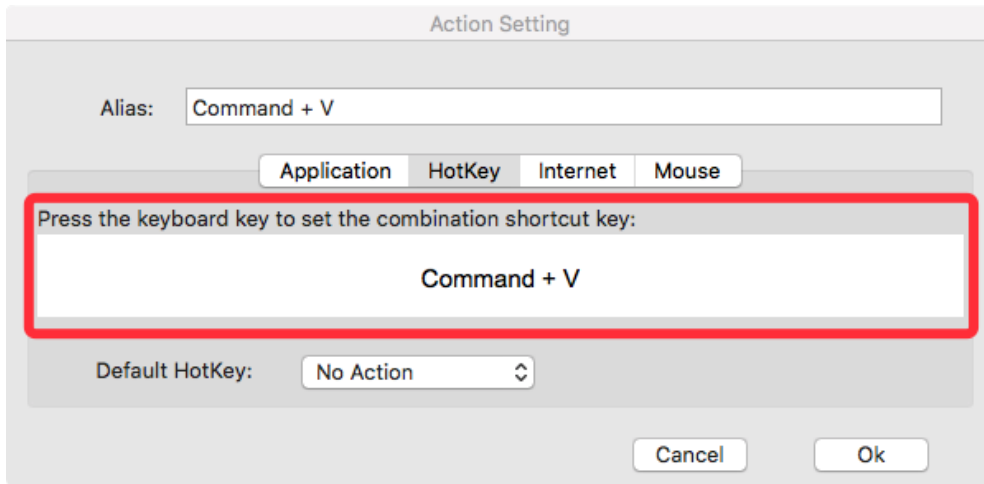


Image 4-30. Action Setting

You can set each shortcut key for different software.

a. Click the “+” button to go to Select Program tab.

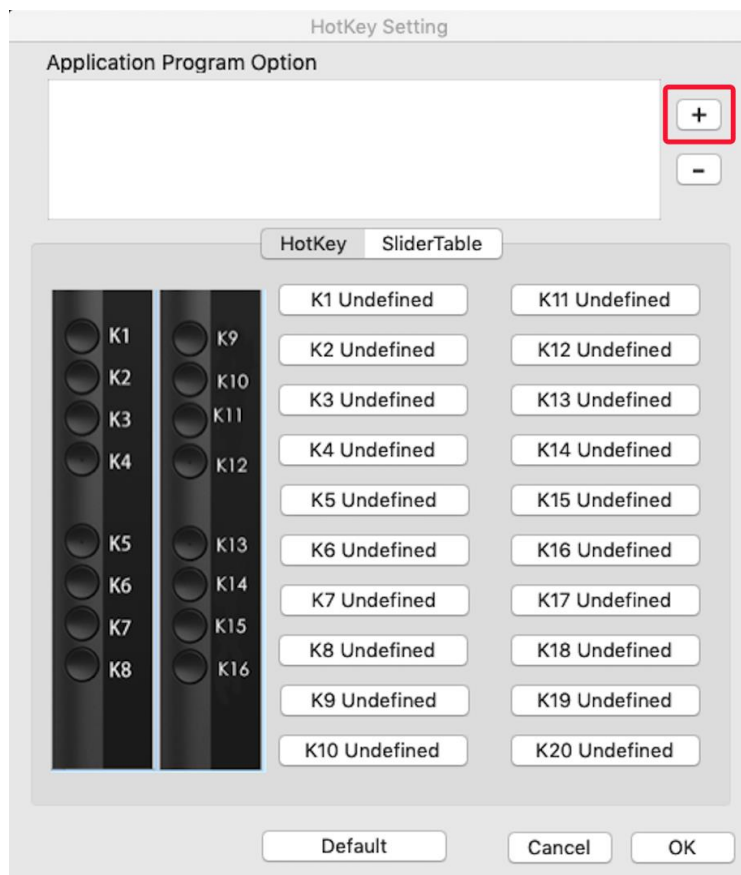


Image 4-31. Select Program

b. Your choice of software.

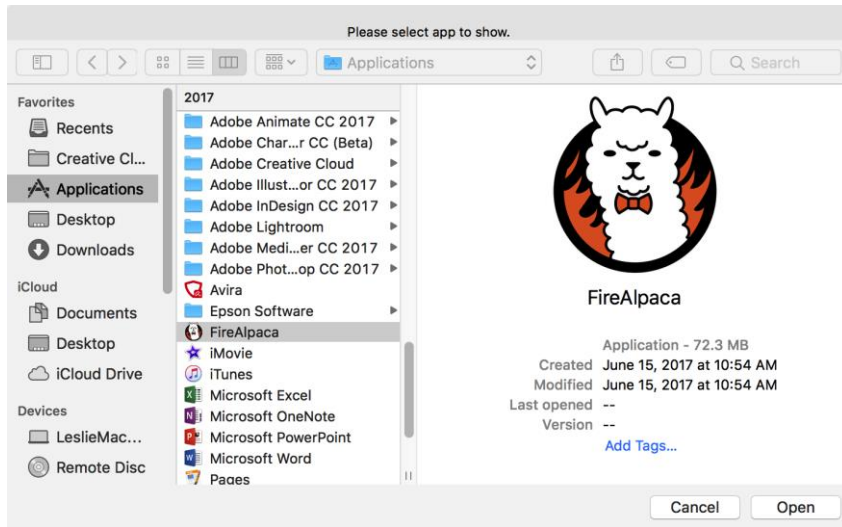


Image 4-32. Select Program

c. Return to the shortcut key settings tab, click the graphics tablet icon then customize the shortcut keys. When you are finished, click the OK button and exit the graphics tablet settings menu.

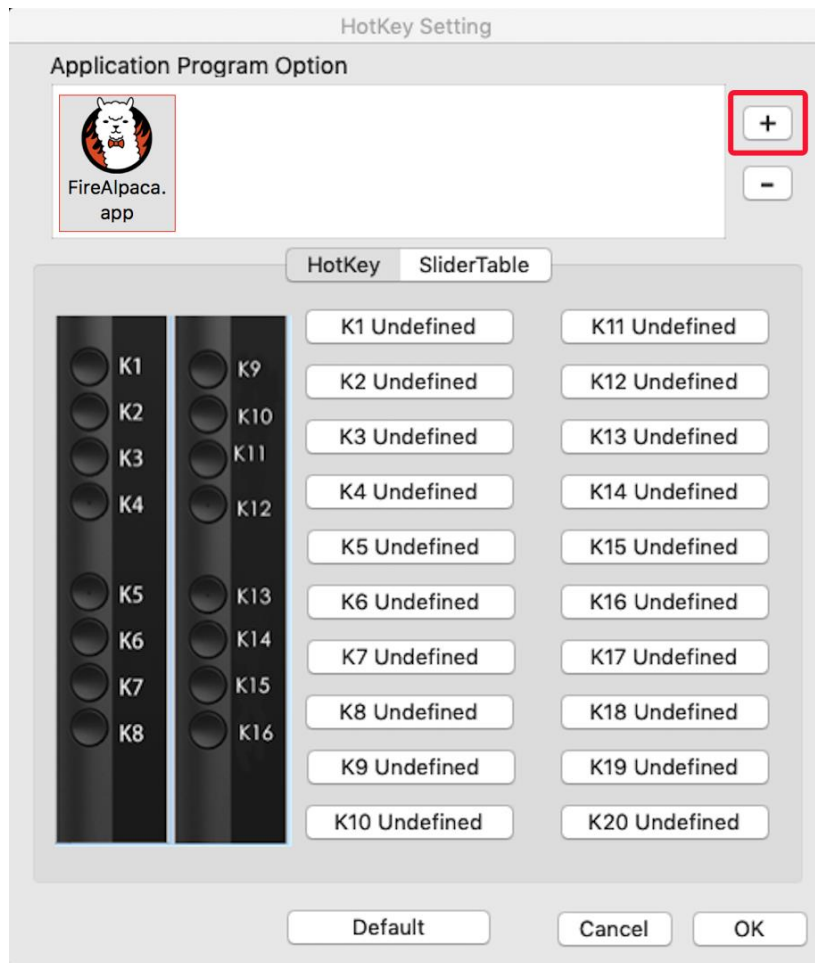


Image 4-33. Hot Key

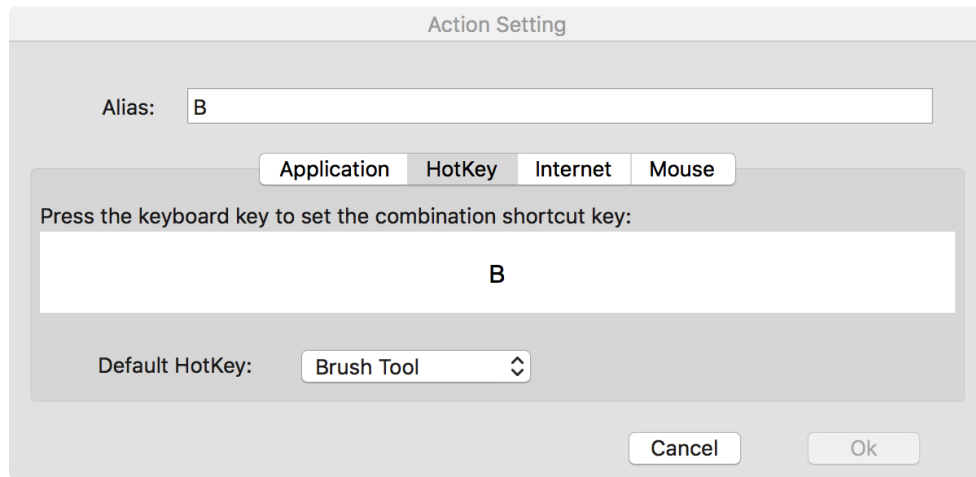


Image 4-34. Action Setting

You can set dial 1 & 2 for different software.

a. Click the software icon first and then go to the Dial tab.

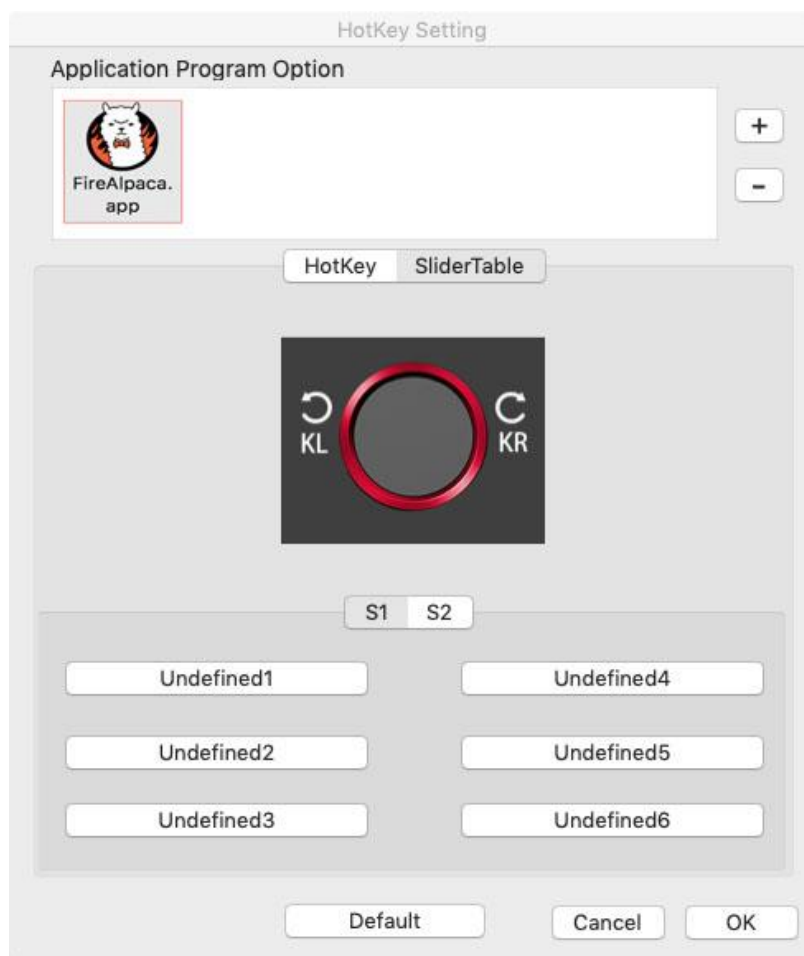


Image 4-35. Slider

b. Click each dial function.

c. On the setting tab, you can customize “Left HotKey” and “Right HotKey” to different shortcuts like Ctrl+ & Ctrl-.

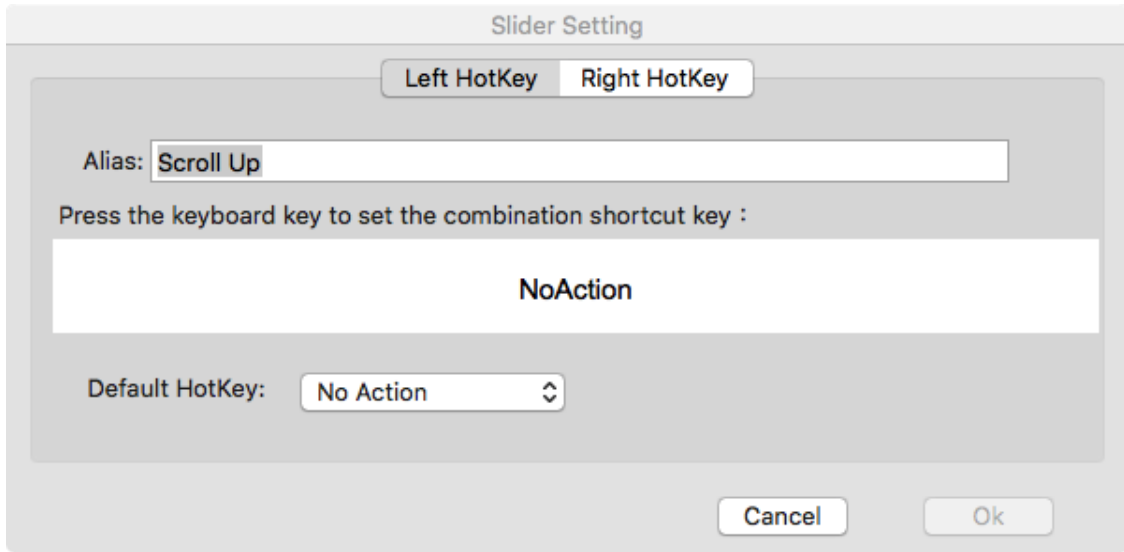


Image 4-36. Slider Setting

1.4. Calibration

The Calibration tab allows you to calibrate your graphics tablet or rotate your display. To calibrate, click Calibration and follow the on-screen instructions.

Rotate: You may rotate the Artist 22R Pro & 24 Pro' s display in this tab.

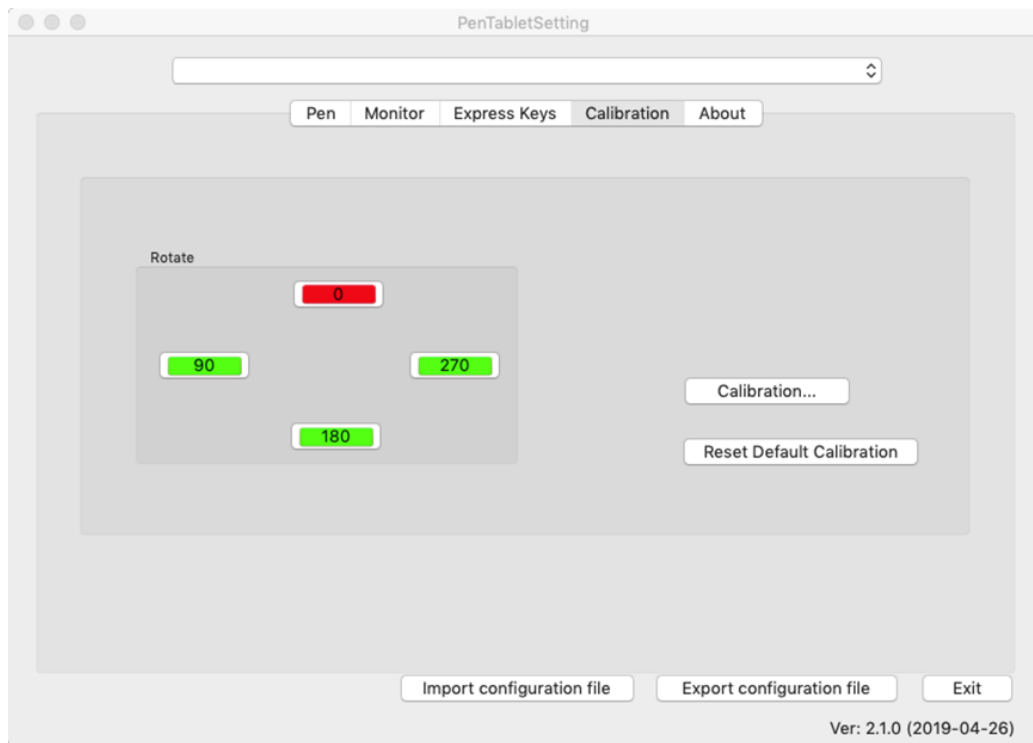


Image 4-37. Calibration

1.5. About

This tab displays the current version of your driver software.

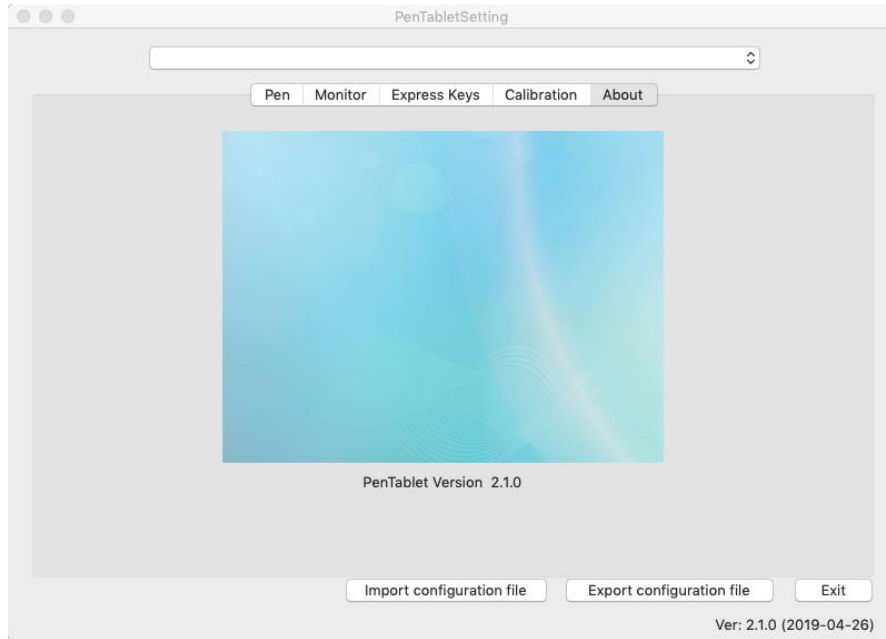


Image 4-38. About

{V. Driver Uninstall}

Windows

In the Start menu, open [Settings] → [Apps & features]. Find “Pen tablet” and click “Uninstall.” Follow the on-screen instructions.

Mac

Open [Finder]→ [Application]→ [Pen tablet], then click “Uninstall Pen tablet” and follow the on-screen instructions.

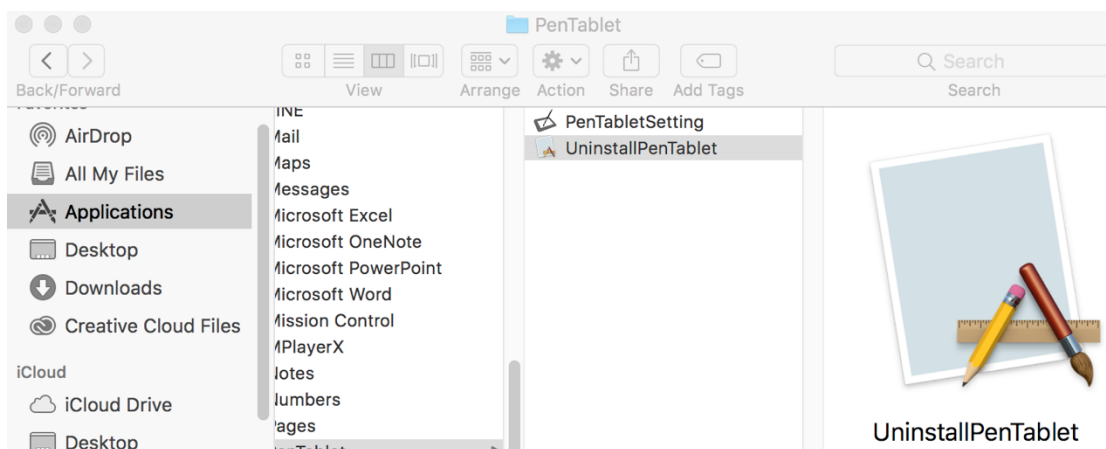


Image 5-1. Mac uninstall

NOTE:


When attempting to reinstall the Artist 22R Pro & 24 Pro driver, be sure to reboot your computer after the uninstall is complete.

{VI. FAQ}


1. Where can I download the latest Artist 22R Pro & 24 Pro driver?

- a. Latest driver releases can be downloaded from our website (www.xp-pen.com).

2. I can't use the stylus to control the cursor.

- a. Turn on your Artist 22R Pro & 24 Pro and make sure you can see the display.
- b. Reinstall the driver and then find the graphics tablet icon9 () in the system tray.
- c. Open it and test the pen pressure gauge inside
- d. If you can't test the pen pressure, please uninstall the driver and reboot. Make sure your computer login account has Administrator authority.
- e. The Artist 22R Pro & 24 Pro supports plug and play, please test your stylus function before reinstalling the driver. If you have control, please disable your antivirus then go to the XP-Pen website to download the latest driver.
- g. When the download is complete, please unzip and extract the contents of the folder to run the .exe or .pkg installation file.
- h. Open the graphics tablet setting again then make sure can you use the pen pressure on it.

3. How do I know that the Artist 22R Pro & 24 Pro driver installed successfully?

- a. After installing the driver, the Artist 22R Pro & 24 Pro's driver icon () should be visible in your system tray on the bottom-right of your screen (Windows OS) and desktop. Pen input will control the cursor and pressure sensitivity will be functional in the driver.

4. Why can't I use the pen pressure on the drawing software?

- a. Please make sure the drawing software can support pen pressure.
- b. Make sure you have the latest driver installed.

- c. Open the graphics tablet setting and make sure you can test the pen pressure in it.
- d. Enable the “windows ink” function then click the ok button to exit. Open the drawing software again and test your pen pressure.
- e. Please note our graphics tablet s do not come with drawing software.

If you have any questions, please contact us at:

Web: www.xp-pen.com

Email: service@xp-pen.com