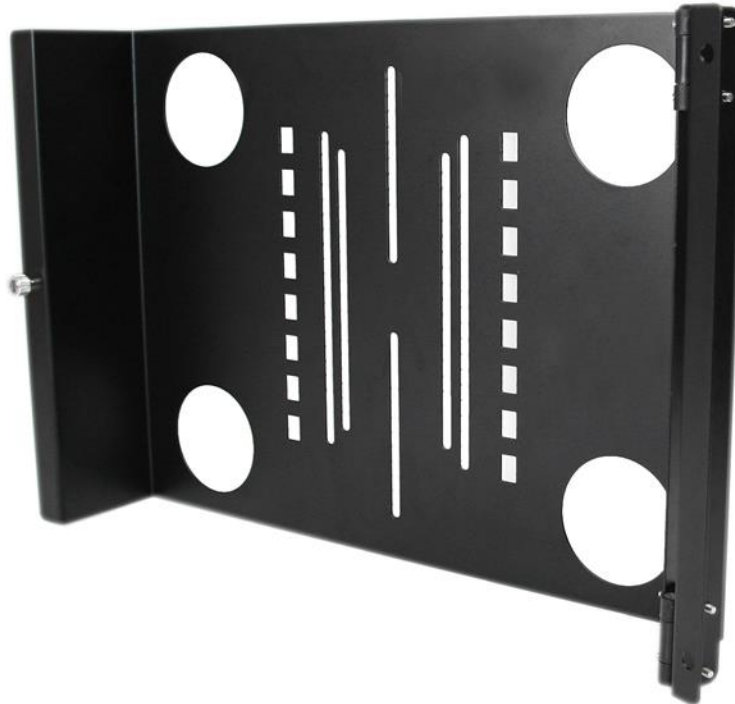


Universal Swivel VESA LCD Mounting Bracket for 19in Rack or Cabinet

Product ID: RKLCD BKT



The RKLCD BKT Universal Swivel VESA LCD Mounting Bracket for 19in Rack or Cabinet lets you mount almost any retail LCD or touch screen into a server rack/cabinet, with tilt and swivel motion for maximum visible range. This TAA compliant product adheres to the requirements of the US Federal Trade Agreements Act (TAA), allowing government GSA Schedule purchases.

Hinged on one of the rail mounts, the LCD bracket can be released to swing out from the rack, as well as offering vertical tilt allowing for perfect placement of your LCD panel with minimal adjustment.

Constructed from solid cold pressed steel (SPCC), the LCD mounting bracket is designed to support 75mm and 100mm VESA mounted panels, and meets ANSI/EIA RS-310-D rack mounting standards.

Backed by a StarTech.com Lifetime warranty.

Certifications, Reports and Compatibility



Applications

- Ideal for installing a retail LCD monitor into an existing Rack or Cabinet
- Installing a touch screen display into a rack or cabinet while retaining access behind it with the swing it out arm
- Can be mounted at any height in the rack; with swivel bracket the screen is always visible

Features

- 100mm and 75mm VESA mounting hole pattern
- Meets ANSI/EIA RS-310-D standards
- TAA compliant for GSA Schedule purchases
- Constructed from solid steel at 2.0mm thick, this bracket is designed for durability

Hardware	Warranty	Lifetime
	Cable Management	No
	Frame Type	Steel
	Industry Standards	EIA RS310-D
	U Height	7U
Performance	VESA Compliance	100x100mm 75x75mm
	Weight Capacity (Stationary)	35.4 lb [16 kg]
Physical Characteristics	Color	Black
	Internal Width	16.7 in [425.3 mm]
	Weight of Product	6.3 lb [2.9 kg]
Packaging Information	Package Height	4.2 in [10.6 cm]
	Package Length	19.3 in [48.9 cm]
	Package Width	12.7 in [32.3 cm]
	Shipping (Package) Weight	7 lb [3.2 kg]
What's in the Box	Included in Package	1 - Mounting back plate 1 - LCD Swivel Mounting Bracket 1 - Package of assembly screws (4 x M5*16 Panel screws, 4 x M5 Cage nuts, 2 x M4*8 screws) 1 - Package of 4 LCD mounting Screws

Product appearance and specifications are subject to change without notice.