

Acer Projectors with 3D Technology

Quick Guide

© 2012 All Rights Reserved.

Acer Projector Series Quick Guide
Original Issue: 8/2012

Model number: _____

Serial number: _____

Date of purchase: _____

Place of purchase: _____

The Acer projector you have bought has integrated DLP and NVIDIA 3D (Optional) technology.

If you have connected your projector to a computer, please read sections "Using NVIDIA 3D Vision technology" on page 3 or "Using DLP 3D / NVIDIA 3DTV Play technology" on page 7.

If you have connected your projector to a DVD or Blu-ray player, please read "Watching 3D DVD or Blu-ray content" on page 11.



Important: When you turn the 3D technology on, you will be shown a reminder that 3D is enabled. If you do not wish to view 3D content, you should turn it off, otherwise the image may not be projected at full brightness.

Note: 3D display is now enabled.

1. Please make sure you have the correct 3D signals and glasses.
2. Remember to turn 3D off if you don't want to see 3D images.
3. If the 3D display isn't correct, please try to enable 3D Sync Invert.
4. Display mode options will be disabled while in 3D mode.

Using 3D glasses

NVIDIA 3D Vision and DLP 3D glasses are powered. In order to enhance battery life, they turn off after a few minutes of inactivity. Before you can view 3D content, you need to ensure the glasses are turned on. In many cases, there is a power switch on one of the arms that you can press, and an LED that indicates if the glasses are turned on or not.



Note: Refer to the documentation that came with your glasses for instructions how to turn them on and how to change the battery.

Using NVIDIA 3D Vision technology

Only available with NVIDIA 3D Vision certified projectors when using NVIDIA 3D glasses.

Before you can enjoy the benefits of the NVIDIA 3D Vision technology, you will need to do the following.

- 1 Ensure your graphics card is supported. Please visit www.nvidia.com/object/3D_Vision_Requirements.html to see if your graphics card is listed. If you are unsure, there is an automatic tool at the top of the page that may help you.



Important: Only NVIDIA graphics cards are supported.

- 2 Download and install the 3D drivers and 3D player from www.nvidia.com/object/3D_Drivers_Downloads.html.
- 3 You should also download a suitable 3D player such as the one available from www.3d.tv.at.



Note: You may need to purchase additional software.

- 4 Ensure you have the NVIDIA 3D glasses and IR-transmitter.

Setting up a 3D environment

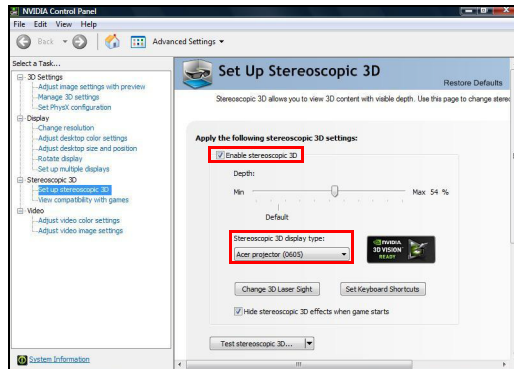
Once you have installed the drivers, you will need to set up the environment.

- 1 Position the infra-red transmitter so that it has maximum coverage. The transmitter controls the 3D glasses and is necessary to view 3D content. Plug the USB cable in to an available USB port on your computer.
- 2 Right-click anywhere on the desktop and select **NVIDIA Control Panel**. This will open the setup Wizard if you haven't previously set up the 3D environment.

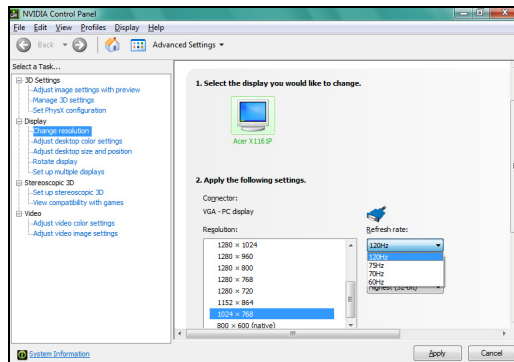


- 3 Follow the onscreen instructions to set up the 3D environment.

- 4 Check the **Enable Stereoscopic 3D** option and select the correct display type.



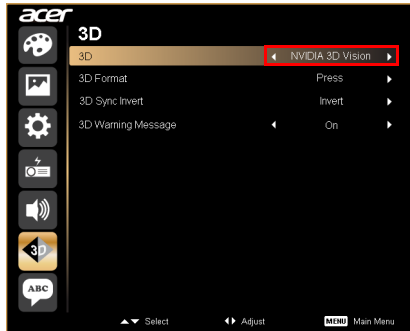
- 5 In the **Select a task...** list, select **Change Resolution**. Make sure the refresh rate of the display has been set to **100/120 Hz** (from the appropriate dropdown menu). If you are viewing Blu-ray 3D content over an HDMI 1.4a or later connection, this will be set automatically.



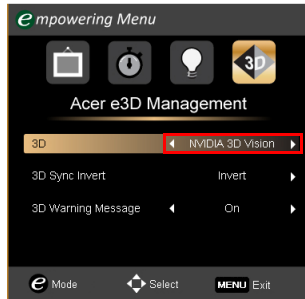
- 6 Press the menu button on the projector remote control to open the OSD. Select the **3D** section (the sixth menu option) on the left-hand side of the window.

6

7 Set 3D to **Nvidia 3D Vision**.



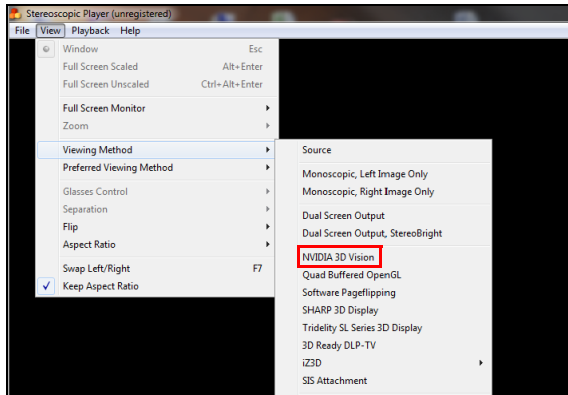
8 Alternatively, press the Empowering Key on your projector's remote control to open Acer e3D Management. From the 3D options, select **Nvidia 3D Vision**.



Using the stereoscopic player

You need to have a stereoscopic player in order to view 3D content. The instructions below explain how to view 3D content using the Stereoscopic player that is available at www.3dtv.at. Other players may have different procedures.

- 1 Open the stereoscopic player and set the viewing method by going to **View > Viewing Method > NVIDIA 3D Vision**.



- 2 Open the 3D content in the player.



.....

Note: You need to view content at fullscreen resolution in order to get the 3D effects.

Using DLP 3D / NVIDIA 3DTV Play technology

Requires DLP 3D glasses.

Before you can enjoy the benefits of the DLP 3D technology, you will need to do the following.

- 1 Ensure your graphics card supports 3D playback.



.....

Note: Please refer to your graphics card's documentation.

- 2 Download and install the latest drivers for your graphics card.



.....

Note: Please refer to your graphics card vendor's website for the latest driver version.

- 3 You should also download a suitable 3D player such as the one available from **www.3dttv.at**.
To download software and use an NVIDIA 3DTV Play ready projector with DLP glasses, refer to the NVIDIA 3DTV Play website: **www.nvidia.com/3dttv**.



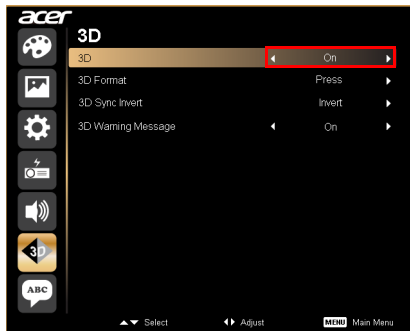
Note: You may need to purchase additional software.

- 4 Ensure you have the correct DLP-compatible 3D glasses.

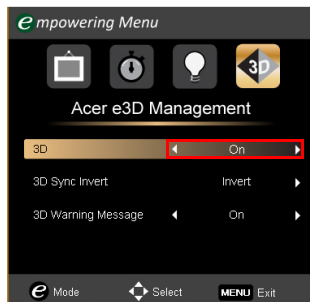
Setting up a 3D environment

Once you have installed the drivers, you will need to set up the environment.

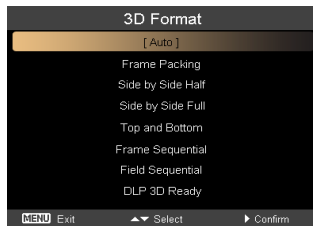
- 1 Set the refresh rate to **100/120 Hz** on your graphics card for frame/field sequential 3D formats. Others, please set refresh rate which the 3D content requires.
If you are viewing Blu-ray 3D content over an HDMI 1.4a or later connection, this will be set automatically.
- 2 Press the menu button on the projector remote control to open the OSD. Select the **3D** section (the sixth menu option) on the left-hand side of the window.
- 3 Set 3D to **On**.



- 4 Alternatively, press the Empowering Key on your projector's remote control to open Acer e3D Management. From the 3D options, select **On**.



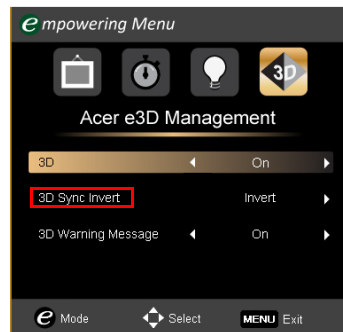
- 5 "3D Format" shows while no enough info, please choose suitable one for correct 3D displaying.



Note:

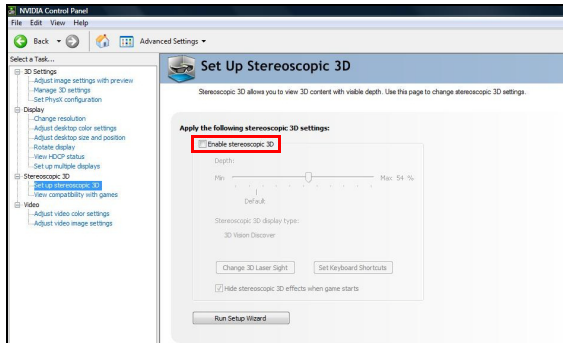
1. The "3D Format" is only available for HDMI 1.4 or 2nd generation 3D projectors.
2. The "Frame Packing" is only existed at HDMI 1.4 or later input.

- 6 If you find that the 3D content is not displaying properly, try selecting **3D Sync Invert** from the projector OSD or Acer e3D Management for frame / field sequential 3D format. Otherwise, try to change the **3D Format** to match the 3D signal.



Important: If you have an NVIDIA graphics card and the *NVIDIA 3D Vision/ 3DTV Play* drivers installed, you may need to disable the

Stereoscopic feature to use the DLP 3D technology, while you are using non-NVIDIA 3D Players.

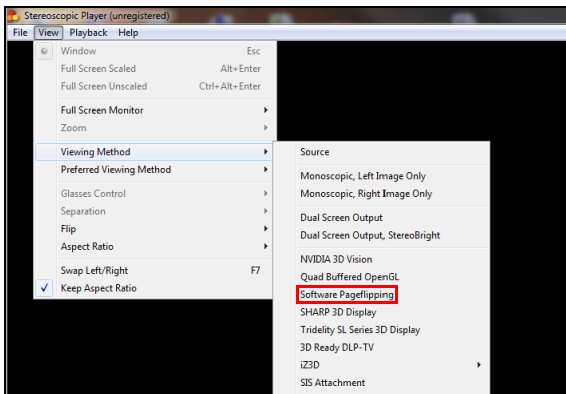


Using the stereoscopic player

You need to have a stereoscopic player in order to view 3D content. The instructions below explain how to view 3D content using the Stereoscopic player that is available at www.3dtv.at.

Other players may have different procedures, e.g. to download and use the NVIDIA 3DTV Play software (including a free photo viewer) with DLP glasses, refer to the NVIDIA 3DTV website: www.nvidia.com/3dtv.

- 1 Open the stereoscopic player and set the viewing method by going to **View > Viewing Method > Software pageflipping**.



- 2 Open the 3D content in the player.



Note: You need to view content at fullscreen resolution in order to get the 3D effects.

Watching 3D DVD or Blu-ray content

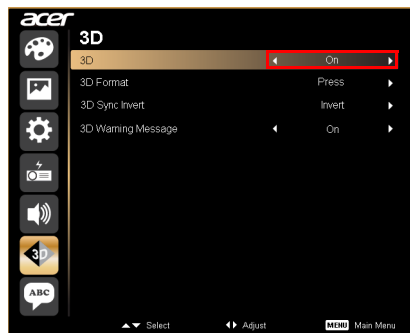
If you have a DVD or Blu-ray player that supports 3D playback, you can watch 3D DVD content using your Acer 3D-enabled projector. Connect your DVD or Blu-ray player to the projector using any of the available input formats.



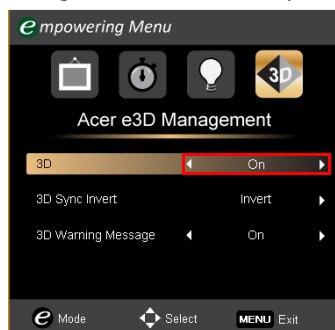
Note: If your DVD or Blu-ray player supports 3D over HDMI 1.4a, check that 3D options are on and the video uses 24p before turning on your projector.

Older connections should check the resolution is set to 480i or 576i.

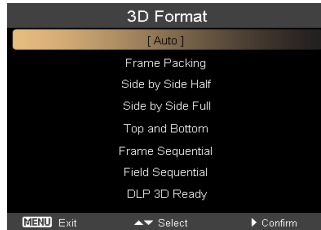
- 1 Press the menu button on the projector remote control to open the OSD. Select the **3D** section (the sixth menu option) on the left-hand side of the window.
- 2 Set 3D to **On**.



- 3 Alternatively, press the Empowering Key on your projector's remote control to open Acer e3D Management. From the 3D options, select **On**.



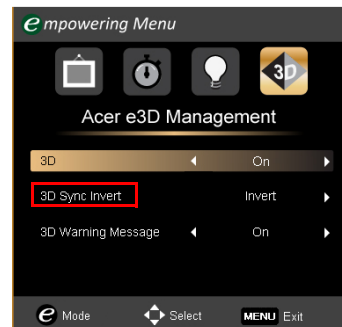
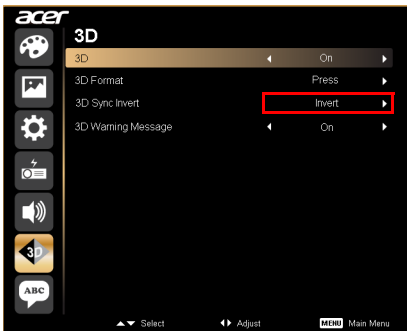
- 4 "3D Format" shows while no enough info, please choose suitable one for correct 3D displaying.



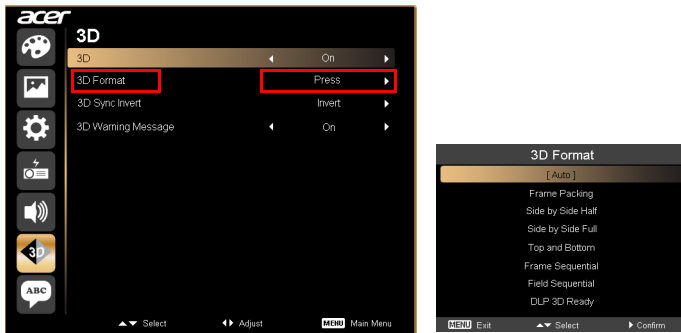
Note:

1. The "3D Format" is only available for HDMI 1.4 or 2nd generation 3D projectors.
2. The "Frame Packing" is only existed at HDMI 1.4 or later input.

- 5 If you find that the 3D content is not displaying properly, try selecting **3D Sync Invert** from the projector OSD or Acer e3D Management.



- 6 If this does not improve the image, change the **3D Format** to match the signal sent by your player.



.....

Note: The "3D Format" is only available for HDMI 1.4 or 2nd generation 3D projectors.