



charge stream™ vent mount

Made for Apple, Samsung,
and other Qi-enabled smartphones

USER MANUAL

Welcome

Thank you for purchasing the mophie® charge stream™ vent mount. The charge stream vent mount securely attaches to your vehicle's vent and will wirelessly charge any Qi-enabled smartphone at up to 10W of power (depending on the device) or any mophie case with wireless charging.

Package contains

- mophie charge stream vent mount
- Standard vent-clip assembly
- Extended vent-clip assembly
- Dash-mount adapter
- QC 2.0 car charger
- Micro-USB cable
- Alcohol swab
- Quick-start guide

Features

- Universal wireless charging: Wirelessly charges any Qi-enabled smartphone at up to 10W of power (depending on the device); charging is optimized for Apple and Samsung fast charge. Will also wirelessly charge mophie cases with wireless charging.
- Easy, one-handed operation: Fixed outer arms provide leverage so you can easily insert or remove your phone with just one hand.

- Fits most smartphones: Adjustable, rubber-coated arms firmly hold different-sized phones while they charge. The rubberized charging surface provides a non-slip grip and won't scratch your phone.
- Flexible installation: The supplied standard and extended vent-clip assemblies let you use the vent mount with a wide variety of different vent configurations. The supplied dash-mount adapter lets you use the vent mount in a convenient location away from a vent.
- Includes QC 2.0 car charger: High-output charger facilitates a fast, efficient charge.

Compatibility

The mophie charge stream vent mount will wirelessly charge any Qi-enabled smartphone or any mophie case with wireless charging. When used with the supplied QC 2.0 car adapter it will fast charge compatible Apple and Samsung smartphones at up to 10W of power (depending on the device). The charge stream vent mount can also deliver a charge through cases up to 3mm thick that contain no metal.

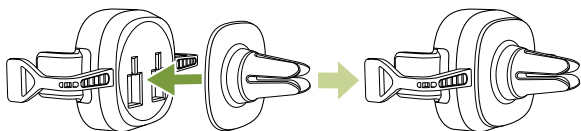
Do not attempt to use the charge stream vent mount with smartphones that are not Qi-enabled.

Installation on a vent

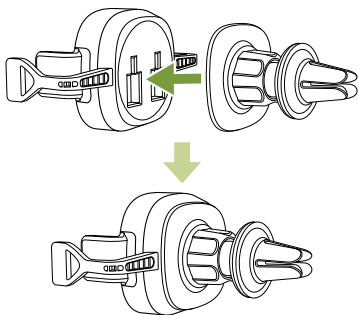
Note: If you decide to attach the dash-mount adapter, see *Installing the Dash-mount Adapter*, on page 10.

1. Determine which vent-clip assembly (standard or extended) is needed for proper placement of the vent mount in your vehicle. Attach the vent-clip assembly to the back of the vent mount as shown.

Standard Vent Clip

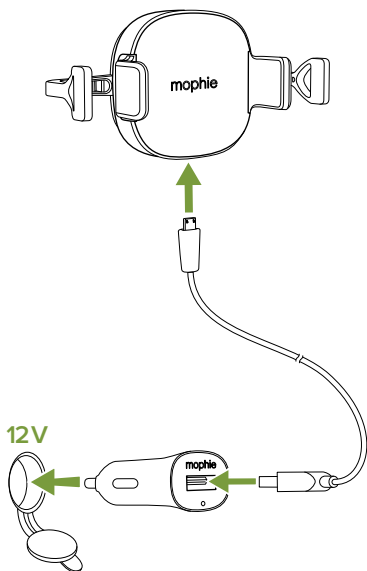


Extended Vent Clip

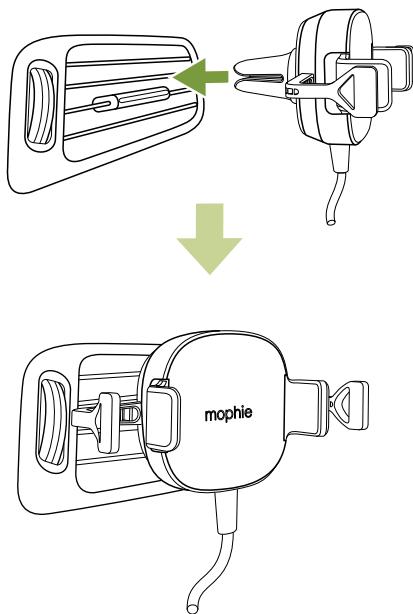


2. Connect the supplied micro-USB cable to the vent mount's micro-USB port and to the supplied QC 2.0 car charger's USB-A port. Insert the car charger into your vehicle's 12-volt power outlet.

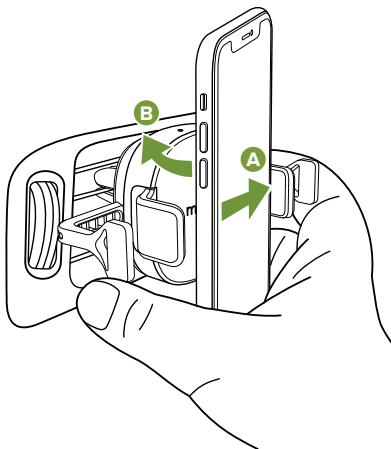
Note: Do not plug the micro USB cable into a vehicle's USB-A port. The vent mount will only work properly when it is powered by the supplied QC 2.0 car charger.



3. Slide the vent clip mounting fingers over one of your vehicle's vent louvers. (You can rotate the vent clip mounting fingers before installation to accommodate different vent louver thicknesses.)

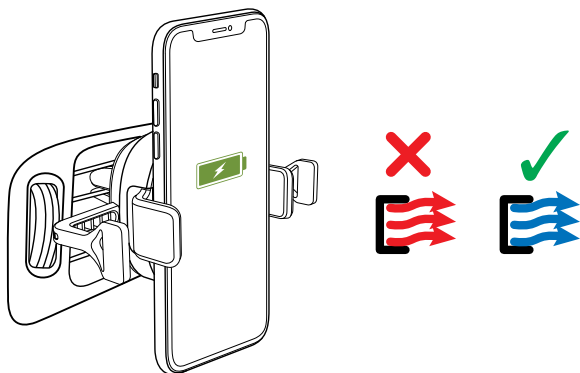


4. Insert your Qi-enabled smartphone or mophie case with wireless charging into the vent mount. Press the side of the device against the inside of the vent mount's inner arm (A) and push the device against the charging surface (B). Using the vent mount's outer arms for leverage will make it easy to insert the device into the vent mount with just one hand.



Using the charge stream vent mount

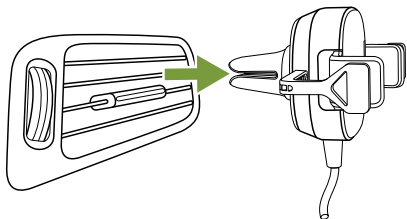
Charging will automatically begin after you insert your Qi-enabled device in the vent mount with the center of the device aligned against the center of the mount.



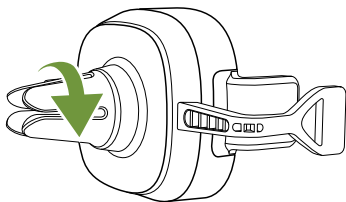
IMPORTANT: DO NOT DIRECT HEATED AIR FROM THE VENT ONTO THE VENT MOUNT WHILE IT IS ATTACHED TO THE VENT—this can damage the vent mount and an inserted device. When running the vehicle’s heater, completely close the vent the vent mount is attached to, or direct the heated air out of the vehicle’s lower vents and entirely away from the upper vents.

Changing to landscape orientation

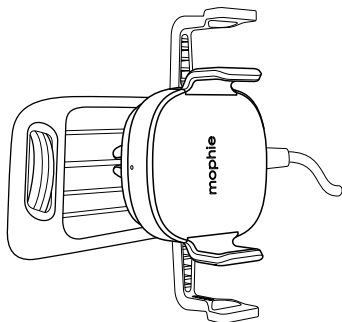
1. Remove the vent mount from the vent.



2. Rotate the vent clip 90 degrees. Do not rotate the vent mount while it is installed on the vent—you may damage the vent louvre.



3. Reinstall the vent mount on the vent in landscape orientation.



Vent mount charging status indicator

The vent mount has an LED that indicates its charging status:

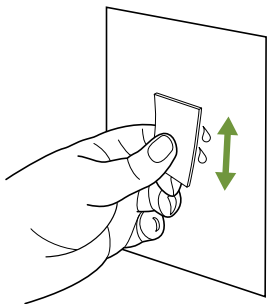
- LED illuminated continuously: The wireless device is properly charging.
- LED flashing: A metallic foreign object (keys, etc.) has been detected against the charging pad. Remove the foreign object.

Installing the dash-mount adapter

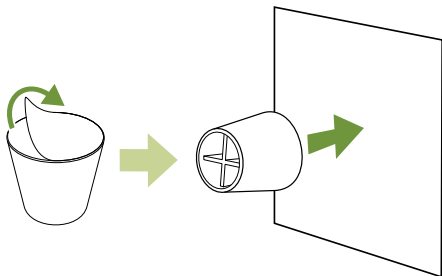
The supplied dash-mount adapter allows you to install the charge stream vent mount in a convenient location away from the vehicle's vents.

Before you begin:

- The dash-mount adapter's adhesive can only be used once, so carefully select the mounting location before adhering the adapter to it.
 - The dash-mount adapter's adhesive is semi-permanent. If you need to remove the adapter later on, click [here](#) for instructions on how to properly remove it.
 - You can use the dash-mount adapter with either the standard or the extended vent-clip assembly.
1. Select the mounting location for the adapter. The location should be at least 2 in x 2 in (51 mm x 51 mm) and must be flat.
 2. Use the supplied alcohol swab to clean the mounting location. Allow it to dry thoroughly before continuing.



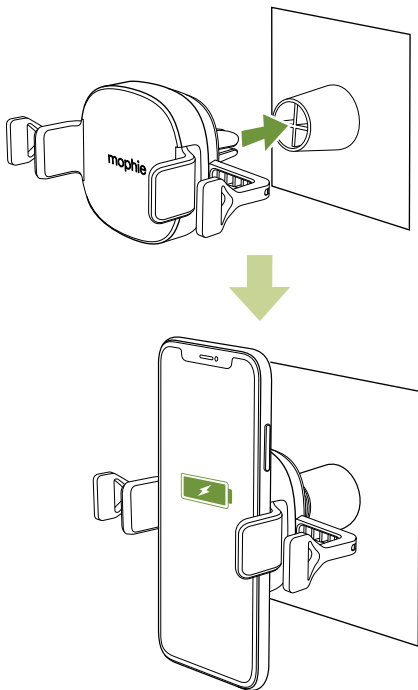
3. Remove the protective cover from the dash-mount adapter's adhesive and firmly press the adapter onto the cleaned mounting location.



4. **VERY IMPORTANT:** Before continuing, wait 24 hours to allow the adhesive to fully cure.



5. After the adhesive has cured for 24 hours, insert the charge stream vent mount into the dash-mount adapter.



Taking care of your charge stream vent mount

- Keep your charge stream vent mount dry and away from moisture and corrosive materials.
- Do not clean your charge stream vent mount with harsh chemicals, soaps or detergents. Just wipe it with a soft, water-dampened cloth.

Warranty

At mophie, we are dedicated to making the best quality products. To back this up, this product is warranted for 2 years. For full details regarding warranty terms and exclusions, please visit: mophie.com/warranty. This warranty does not affect any statutory rights that you may be entitled to. Keep a copy of your purchase receipt as proof of purchase. Be sure to register your product at mophie.com. Failure to register your product and/or provide proof of purchase may void the warranty.

Exclusions & limitations

Except for the limited warranty expressly set forth or to the extent restricted or prohibited by applicable law, mophie expressly disclaims any and all other warranties express or implied, including any warranty of quality, merchantability, or fitness for a particular purpose, and you specifically agree that mophie shall not be liable for any special, incidental, indirect, punitive, or consequential damages of any type on any mophie product. In addition to and

without limiting the generality of the foregoing disclaimers, the limited warranty does not, under any circumstances, cover the replacement or cost of any electronic device or personal property inside or outside of the mophie product.

You may have additional warranty rights depending on your country, state, or province. Further, some countries, states, and provinces do not allow the exclusion or limitation of incidental or consequential damages or exclusions or limitations on the duration of implied warranties, so the above may not apply to you. If any provision of the warranty is found unlawful, void, or unenforceable, that provision shall be deemed severable and shall not affect any remaining provision.

Customer service

Telephone: 1-888-8mophie (1-888-866-7443)

International: 1-269-743-1340

Web: www.mophie.com/cs

Warning

Read all instructions and warnings prior to using this product. Improper use of this product may result in product damage, excess heat, toxic fumes, fire, or explosion, for which damages you ("Purchaser"), and not mophie llc ("Manufacturer") are responsible.

- X-Ⓢ Do not direct heated air from the vent onto the vent mount while the vent mount is operating. When running the vehicle's heater, completely close the vent the mount is attached to, or direct the heated air out of the vehicle's lower vents and entirely away from the upper vents.
- X-Ⓢ Do not store device in high-temperature environment, including heat caused by intense sunlight or other forms of heat. Do not place device in fire or other excessively hot environments.
- X-Ⓢ Do not disassemble this product or attempt to re-purpose or modify it in any manner.
- X-Ⓢ Do not attempt to power this device using any method, apparatus, or connection other than the device's micro USB connector. For questions or instructions for the various ways to power the device refer to the illustrations in this user manual.
- X-Ⓢ Do not attempt to replace any part of this device.
- X-Ⓢ If this device is accessible to or may be used by a minor, purchasing adult agrees to be solely responsible for providing supervision, instruction, and warnings. Purchaser agrees to defend, indemnify, and hold Manufacturer harmless for any claims or damages arising from unintended use or misuse by a minor.
- X-Ⓢ All products have gone through a thorough quality assurance inspection. If you find that

your device is excessively hot, is emitting odor, is deformed, abraded, cut, or is experiencing or demonstrating an abnormal phenomenon, immediately stop all product use and contact Manufacturer.

- ⓧ To comply with FCC RF exposure compliance requirements, this wireless charging device must be used with a separation distance of at least 10 cm from all persons.
- ⓧ This product is intended exclusively for use in motor vehicles.

Legal

This product is meant for use only in conjunction with the appropriate device. Please consult your device packaging to determine whether this product is compatible with your particular device. Manufacturer is not responsible for any damages to any device incurred through the use of this product. Manufacturer shall not in any way be liable to you or to any third party for any damages you or any third party may suffer as a result of use, intended or unintended, or misuse of this product in conjunction with any device or accessory other than the appropriate device for which this product is designed. Manufacturer will not be responsible for any damages you or any third party may suffer as a result of misuse of this product as outlined above.

Purchaser agrees to defend, indemnify, and hold Manufacturer harmless for any claims or damages arising from unintended use or misuse, including use with an unintended device.

mophie, charge stream, Stay Powerful, mophie loves you, the five-circles design, and the mophie logo are trademarks of mophie inc. Apple is a trademark of Apple Inc. Samsung is a trademark of Samsung Electronics Co., Ltd. The 'Qi' symbol is a trademark of the Wireless Power Consortium. All rights reserved. Patents: mophie.com/patents.

This device complies with part 15 of the FCC Rules and RSS-Gen of IC Rules. Operation is subject to the following two conditions: (1) This device may not cause harmful interference, and (2) this device must accept any interference received, including interference that may cause undesired operation.

NOTE: This equipment has been tested and found to comply with the limits for a Class B digital device, pursuant to part 15 of the FCC Rules. These limits are designed to provide reasonable protection against harmful interference in a residential installation. This equipment generates, uses, and can radiate radio frequency energy and, if not installed and used in accordance with the instructions, may cause harmful interference to radio communications. However,

there is no guarantee that interference will not occur in a particular installation.

If this equipment does cause harmful interference to radio or television reception, which can be determined by turning the equipment off and on, the user is encouraged to try to correct the interference by one or more of the following measures:

- Reorient or relocate the receiving antenna.
- Increase the separation between the equipment and receiver.
- Connect the equipment into an outlet on a circuit different from that to which the receiver is connected.
- Consult the dealer or an experienced technician for help.

CAUTION: To comply with the limits of the Class B digital device, pursuant to Part 15 of the FCC Rules, this device must be used with certified peripherals and shielded cables. All peripherals must be shielded and grounded. Operation with non-certified peripherals or non-shielded cables may result in interference to radio or reception.

MODIFICATION: Any changes or modifications of this device could void the warranty.

Statement of Compliance

Hereby, ZAGG International declares that the radio equipment wireless charging pad is in compliance with Directive 2014/53/EU. The full text of the EU declaration of conformity is available at the following internet address: http://www.mophie.com/cert_red

WEEE Declaration

All of our products are marked with the WEEE symbol; this indicates that this product must NOT be disposed of with other waste. Instead it is the user's responsibility to dispose of their waste electrical and electronic equipment by handing it over to an approved re-processor, or by returning it to mophie inc. for reprocessing. For more information about where you can send your waste equipment for recycling, please contact mophie inc. or one of your local distributors.

 STAY POWERFUL[®]