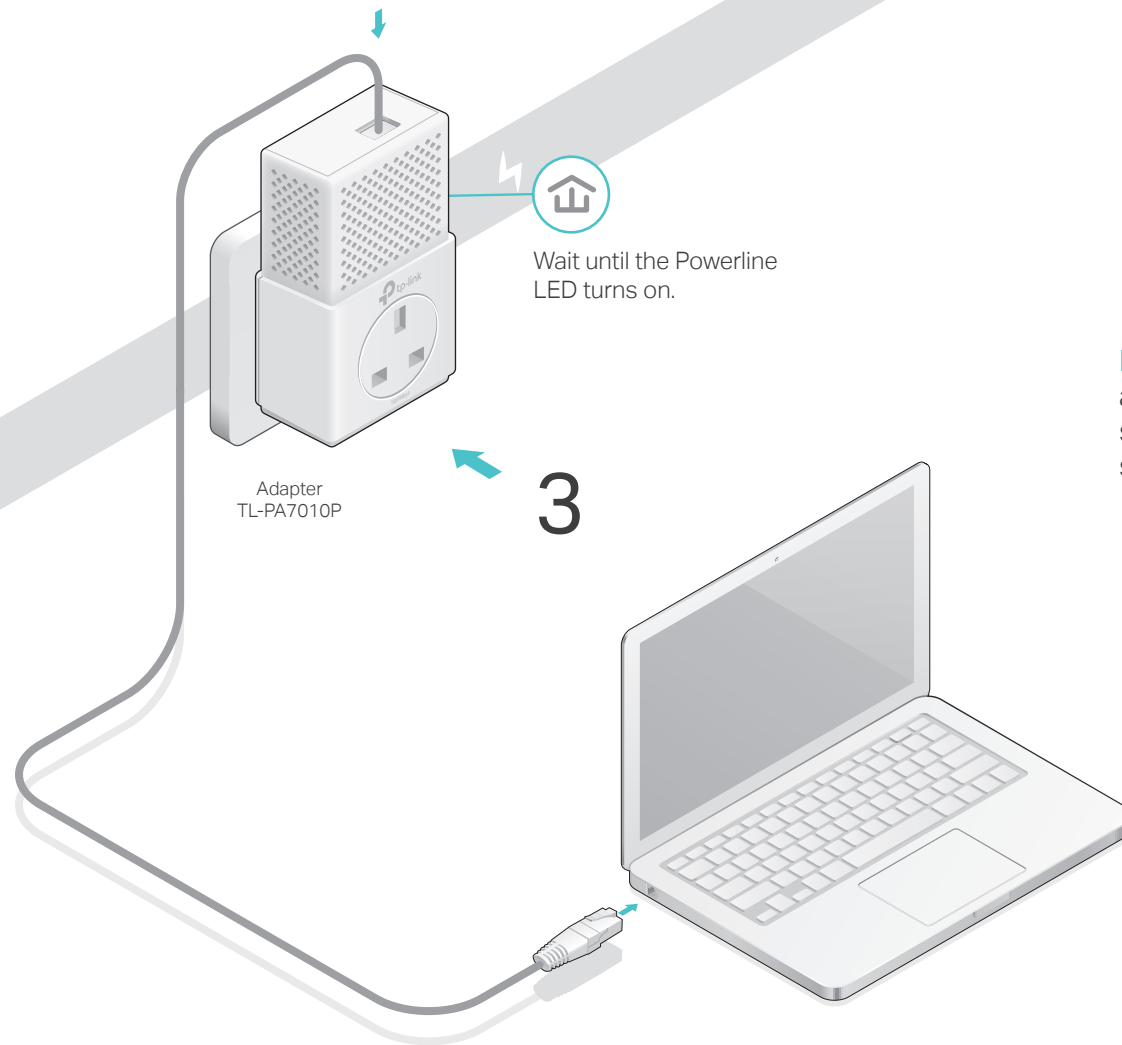
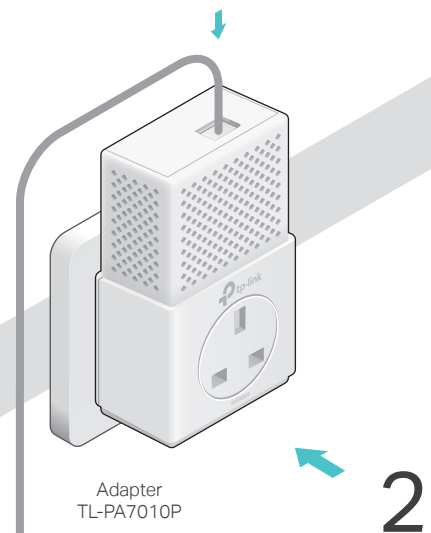
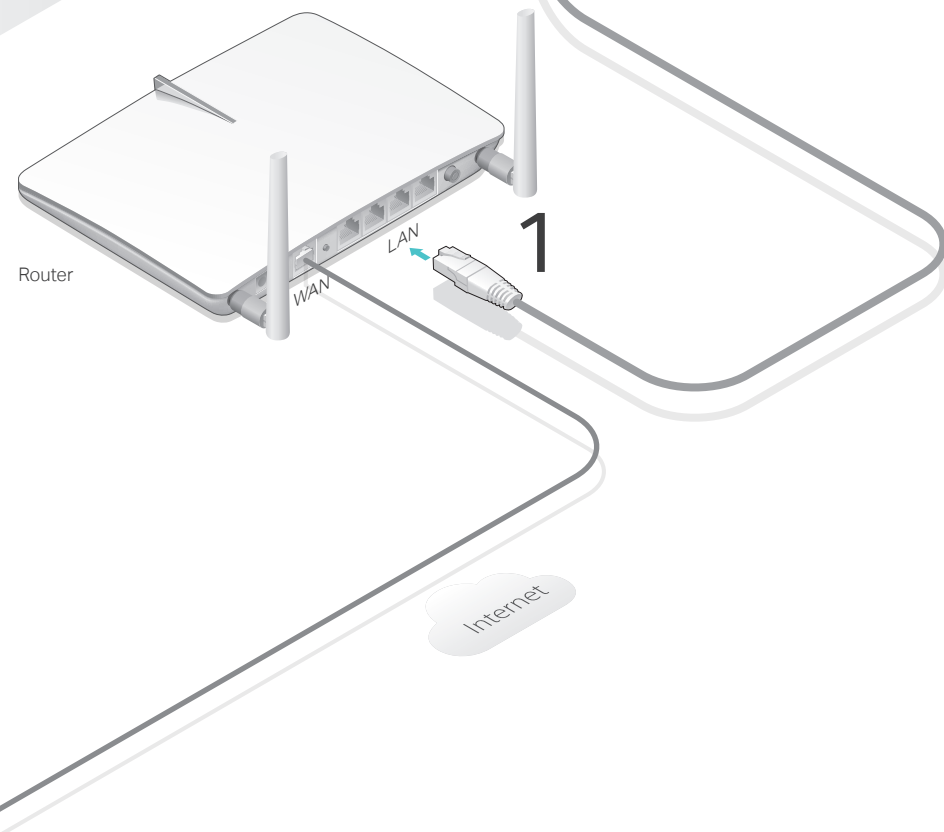


Hello, I'm here.

Follow me to extend your home network.

* Applicable to TL-PA7010P, and its multiple-pack kits
* TL-PA7010P KIT (UK version) is used for demonstration in this guide.

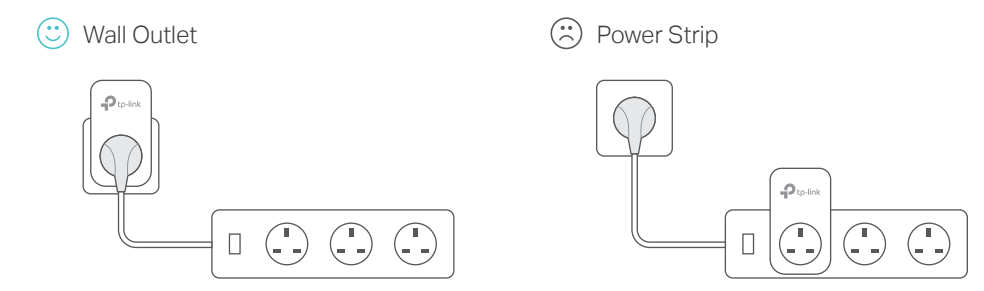


Wait until the Powerline LED turns on.

More: To add additional Powerline adapters and extenders with the default settings, simply plug them into the wall sockets on the same electrical circuit.

4 Enjoy!


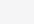
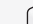
Attention

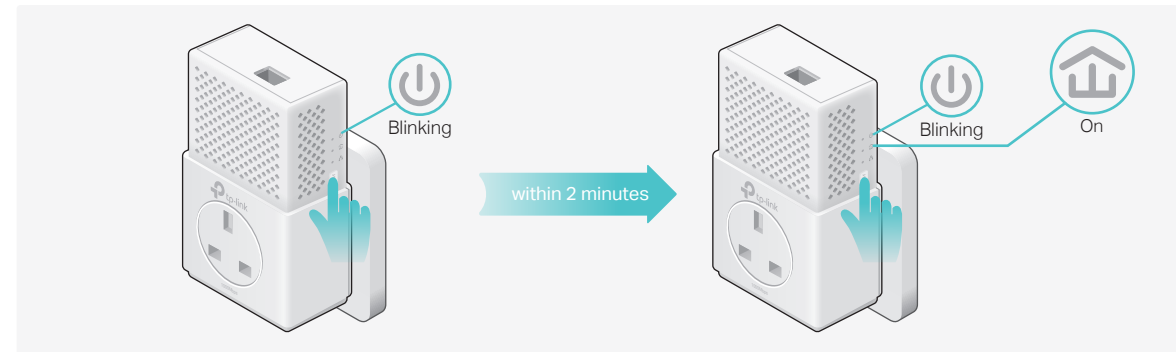


Set Up a Secure Powerline Network by Pairing (Recommended)

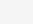
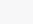
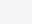
You can create or join a secure powerline network using the Pair button on two devices at a time.
 Tips: We recommend that you plug in the powerline devices near each other when pairing.

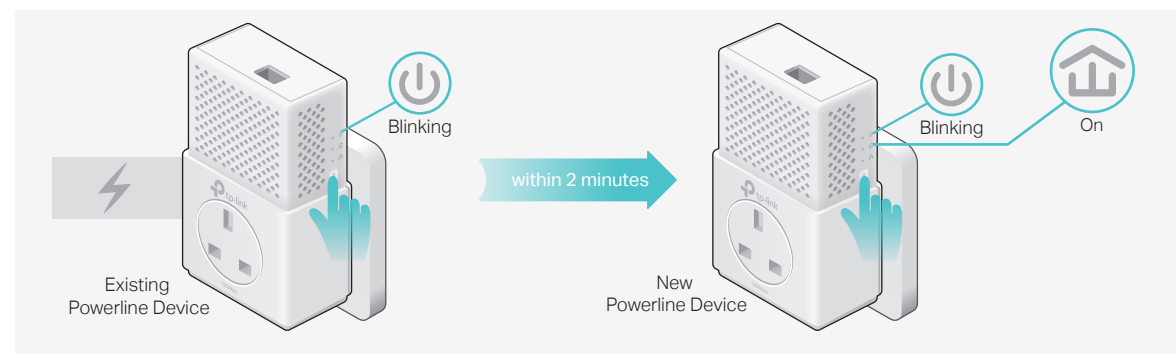
To create a secure powerline network:

- 1 Press the Pair button on one of the powerline devices for 1 second. Its Power LED  starts blinking.
 Note: If the Power LED does not blink, press the Pair button again.
- 2 Within 2 minutes, press the Pair button on another device for 1 second. Its Power LED  starts blinking.
- 3 When the Powerline LED  is on and stable, it's done.

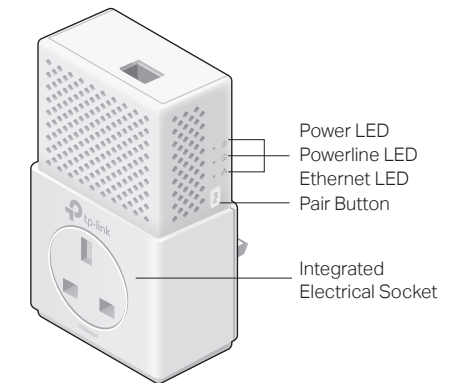


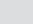
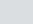
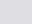
To join an existing secure powerline network:

- 1 Press the Pair button on any of the existing powerline devices for 1 second. Its Power LED  starts blinking.
 Note: If the Power LED does not blink, press the Pair button again.
- 2 Within 2 minutes, press the Pair button on the new powerline adapter for 1 second. Its Power LED  starts blinking.
- 3 When the Powerline LED  is on and stable, it's done.



Physical Appearance



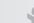
LED	STATUS	DESCRIPTION
 Power	On/Off Blinking	The powerline adapter is on or off. Once every second: Pairing is in process. Once every 3 seconds: Power-Saving Mode is on.*
	Yellow-green	The powerline adapter is in a location with a good signal strength.
 Powerline	Red Off	The powerline adapter is in a location with a poor signal strength. We recommend trying another wall socket. The powerline adapter is not connected to any powerline network or is in Power-Saving Mode.
 Ethernet	On/Off	The Ethernet port is connected or disconnected.

* Five minutes after the device connected to the powerline adapter is turned off or inactive, the powerline adapter will automatically switch to Power-Saving Mode.

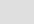
ITEM	DESCRIPTION
Pair Button	Press and hold for 1 second to set up or join a secure powerline network. Press and hold for about 8 seconds to leave an existing powerline network. Press and hold for more than 15 seconds to reset the powerline adapter.
Integrated Electrical Socket	Used as an electrical outlet expansion for power strip or household appliances. It can remove some electrical noise that might affect powerline performance.

Frequently Asked Questions

Q1. How do I reset my powerline adapter?

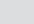
A. With the powerline adapter plugged into the electrical outlet, press and hold the Pair button for more than 15 seconds until the Power LED  goes off momentarily and comes back on.

Q2. How to troubleshoot if there is no Internet connection in my powerline network?

- A1. Make sure all powerline devices are on the same electrical circuit.
- A2. Make sure the Powerline LEDs  light up on all of your powerline devices. If they do not, reset or pair all your powerline devices.
- A3. Make sure all hardware devices are correctly and securely connected.
- A4. Check if you have an Internet connection by connecting the computer directly to the modem or router.

A5. Make sure your computer's IP address is in the same segment as your router's.

Q3. What should I do if a successfully-paired powerline device does not reconnect after it has been moved to a new location?

- A1. Try another socket and make sure it is on the same electrical circuit.
- A2. Try to pair it again, and make sure the Powerline LED  is on.
- A3. Check for possible interference, such as a washer, air conditioner or other household appliance that may be too close to one of the powerline devices. Plug them into the integrated electrical sockets to remove some electrical noise.

Easy Management

Using tpPLC utility for advanced configuration:

1. Visit <http://www.tp-link.com>, and search for your product.
2. Find and download the compatible version of utility on its Support page.
3. Install the utility and start your configuration.



For more information, please visit our website:
<http://www.tp-link.com>