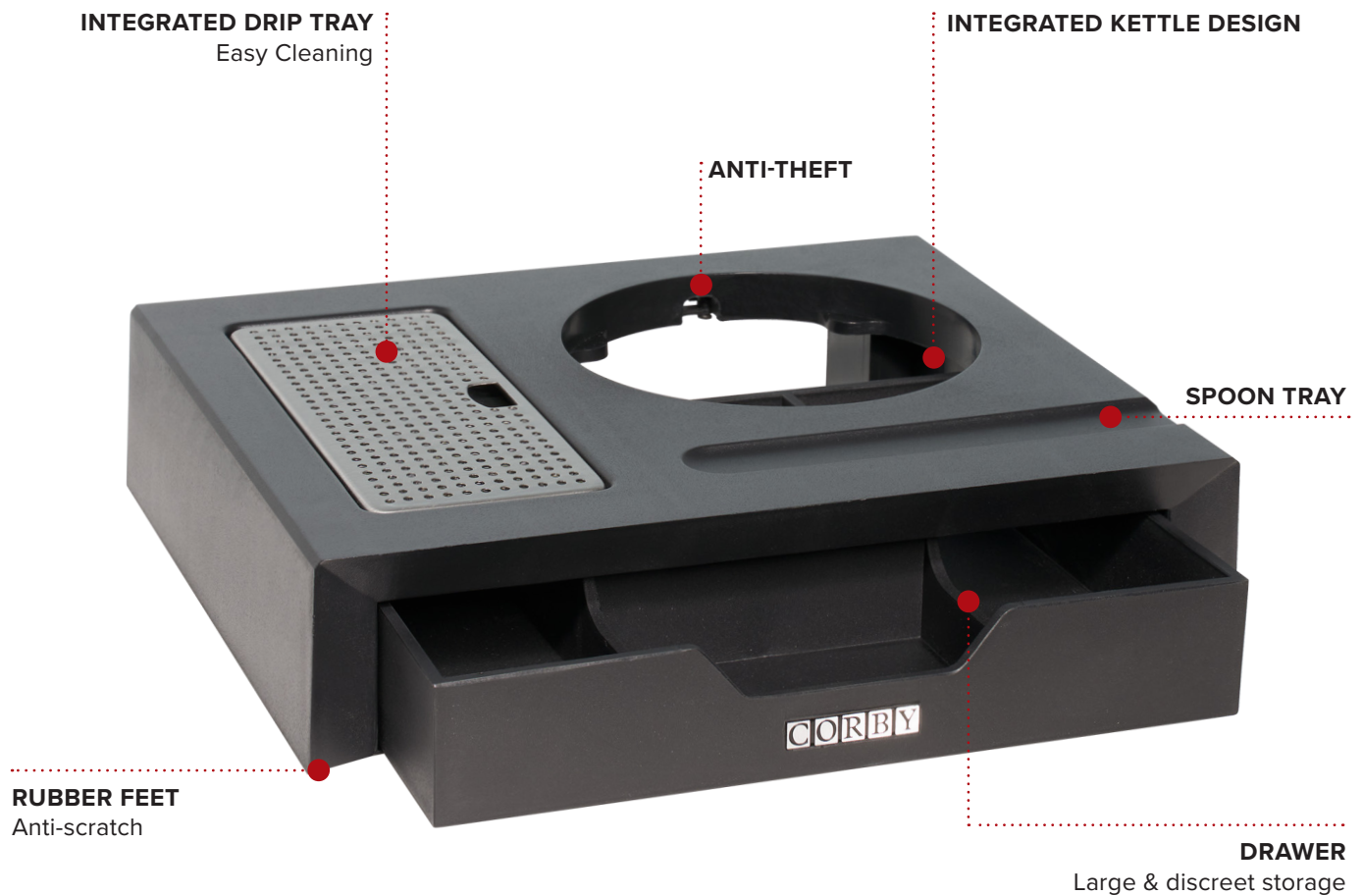


CANTERBURY DRAWER WELCOME TRAY



- Accommodates Canterbury kettles
- Space saving design
- 100% water resistant
- Durable ABS and PA construction
- Compartment 1: (x2) H32 x W54 x D162mm
- Compartment 2: H32 x W91 x D99mm
- Compartment 3: H32 x W91 x D60mm

Specification

Black
1.02kg

