

Quick guide / User Manual
Vertical Mouse Evoluent 4 Small

 BAKKER ELKHUIZEN

 **Evoluent**TM
Inventor of the handshake grip



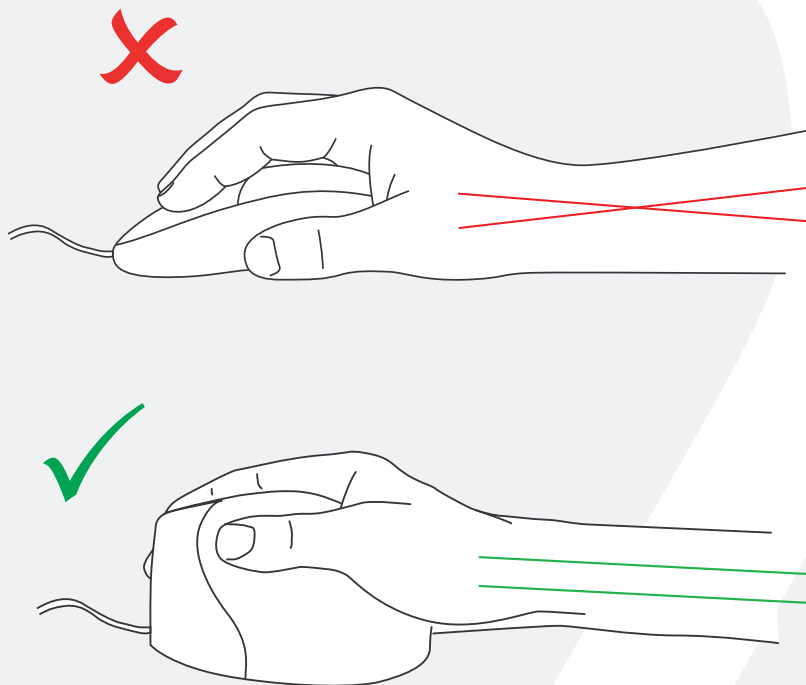
Vertical Mouse Evoluent 4 Small

With a standard mouse, the wrist is fully turned, i.e. the palm faces downwards. This is not a natural posture.

When you place your wrist in the 'handshake grip' position, it has assumed a neutral posture.

This is easier to maintain and is, at the same time, more pleasant. And the more comfortable you are sitting in front of your computer, the more productive you are.

The Evoluent Mouse is the most advanced vertical mouse in the BakkerElkhuizen product portfolio.



Vertical Mouse Evoluent 4 Small

Standard button settings

- ① Top button - left click
- ② Middle button - auto-scroll
- ③ Bottom button - right click
- ④ Wheel button - forward
- ⑤ Upper thumb button - back
- ⑥ Bottom thumb button - no function without driver



Vertical Mouse Evoluent 4 Small

Adjusting speed

- 1 Press the + or - button on the side of the mouse to set the speed.
- 2 Current setting can be read from the indicator lights on the top of the mouse.

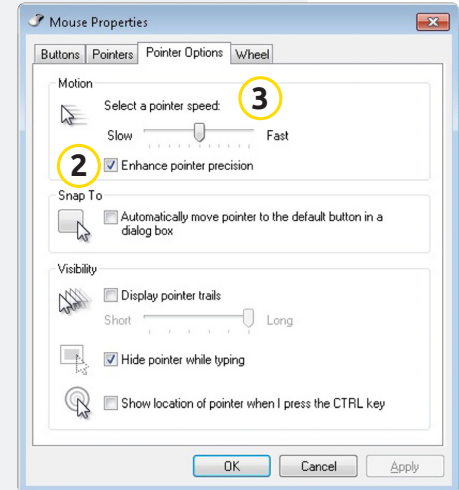
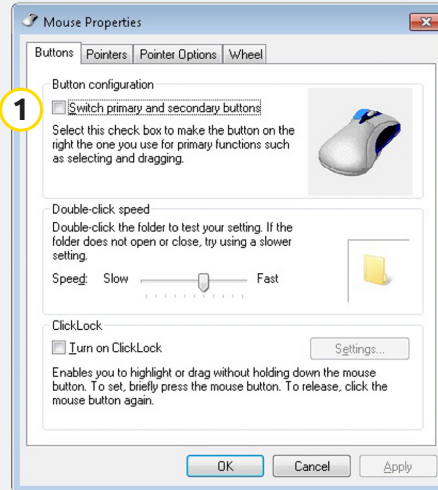


Vertical Mouse Evoluent 4 Small

Windows Install

Before connecting Evoluent Mouse, go to Control Panel, Add or Remove Programs and remove any previous Evoluent Mouse Manager and any other mouse software, except touchpad driver. If there is no mouse software listed, skip this step.

- Before connecting the Evoluent Mouse, go to Control Panel, Mouse, and:
 1. Uncheck the box for Swap Primary and Secondary Buttons.
 2. Check the box for Enhance Pointer Precision. This is very important.
 3. In Pointer Options, set the pointer speed slider to the middle position.
- Insert the USB connector into a USB port directly on the computer.
- If the Add Hardware Wizard appears, do not select Search for Best Driver, but choose Display All Drivers, and select Human Interface Device (HID) Compliant Mouse.



Vertical Mouse Evoluent 4 Small

Customize your Evoluent mouse

Download the latest MAC or Windows driver for your Evoluent Mouse

<http://www.bakkerelkhuizen.com/ergonomic-mice/evoluent4-right-small/>

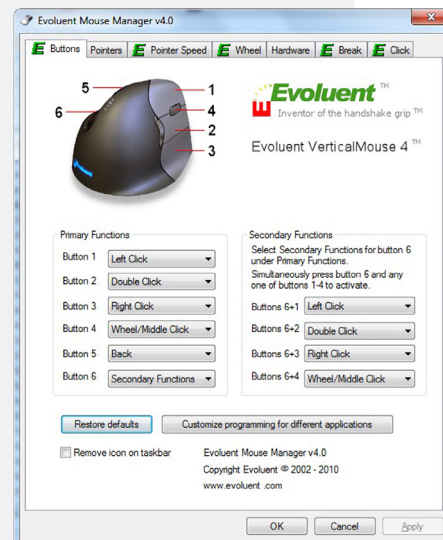
Driver

Evoluent Mouse Manager (driver) may optionally be installed to program the buttons. Download the most current driver from our website.

After you have completed the installation, you can program the buttons on the Evoluent.

You can even set different functions for each application! See the list with the optional functions.

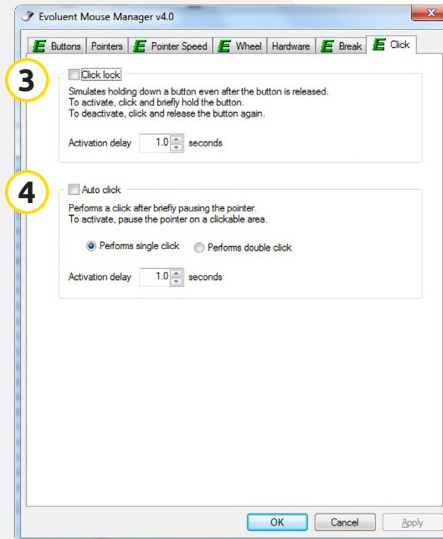
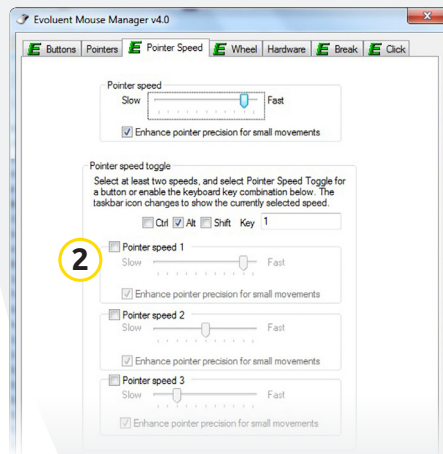
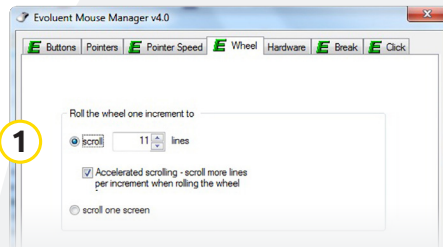
- Disabled
- Left Click
- Right Click
- Wheel/Middle Click
- Alt
- Auto Pan
- Back
- Backspace
- Close
- Copy
- Ctrl
- Cut
- Delete
- Double Click
- Enter
- Esc
- Explorer
- F1 – F12
- Forward
- Keystroke
- Recording
- Launch Application
- Maximize
- Minimize
- Page Down
- Page Up
- Paste
- Pointer Speed Toggle
- Print Screen
- Run
- Shift
- Show/Hide Desktop
- Spacebar
- Start
- Switch Applications
- Tab
- Undo
- Zoom



Vertical Mouse Evoluent 4 Small

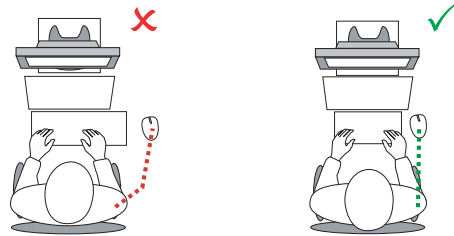
Driver

- 1 Adjust the speed of the scroll wheel.
- 2 Here you can set 2 or 3 speeds. By setting a key combination you can toggle between the speeds.
- 3 The click lock functions enables you to keep the left mouse button activated. Deactivate with another click.
- 4 The auto click function creates an automatic click after a set time on a clickable area.



Tip

Combine the Evoluent Mouse with a compact keyboard to reduce Arm strain by reaching to the mouse.



 BAKKER ELKHUIZEN

www.bakkerelkhuisen.com

For more information about our ergonomic solutions,
go to our website: www.bakkerelkhuisen.com