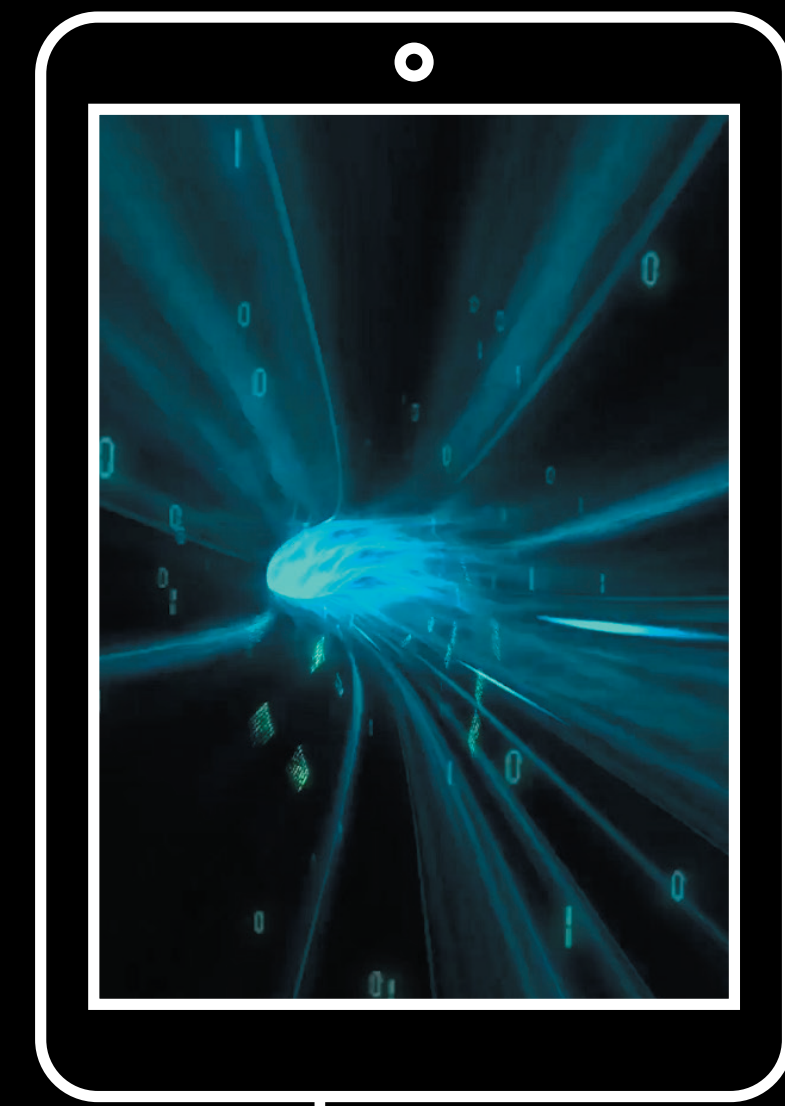


SKYLARX

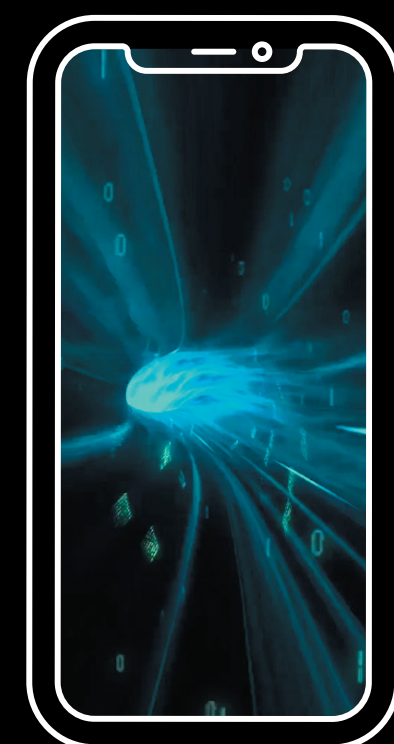
HOW TO SETUP YOUR SKYLARX DEVICE

VIDEO SOURCE

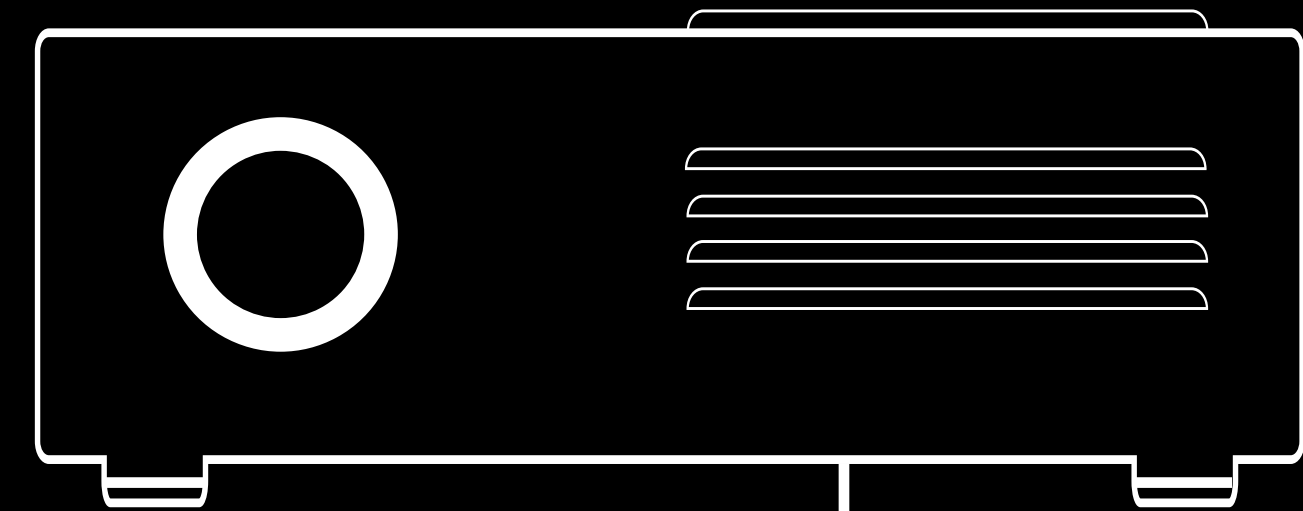
A SMALL NUMBER OF DEVICES MAY REQUIRE AN ADAPTER



TABLET



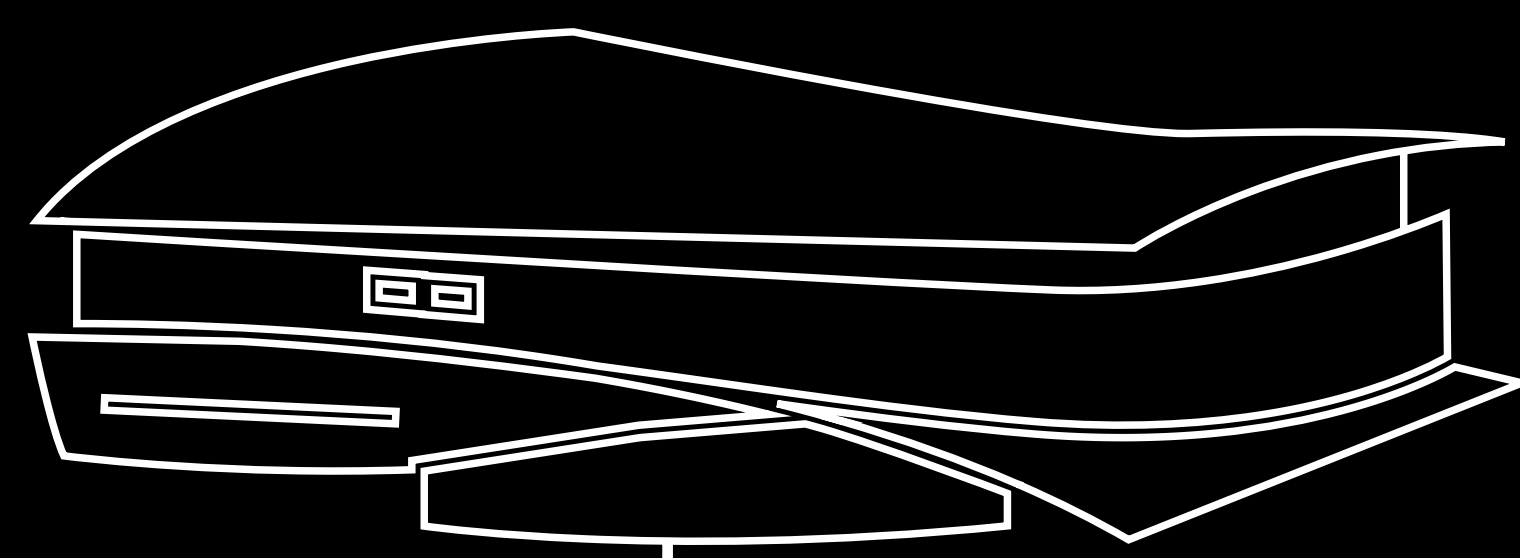
SMART PHONE



OVERHEAD PROJECTOR



DIGITAL SET TOP BOX



GAMES CONSOLE



LAPTOP

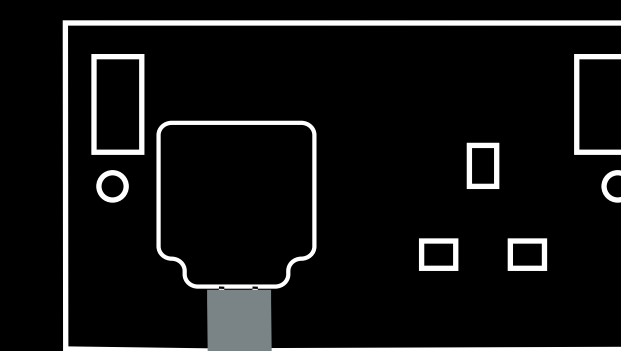


RECEIVER

HDMI

MICRO USB

CONNECT TO A POWER SOURCE
- EITHER VIA A MAINS WALL PLUG
OR A USB 3 (1.0A OUTPUT) SOCKET
ON ANOTHER DEVICE

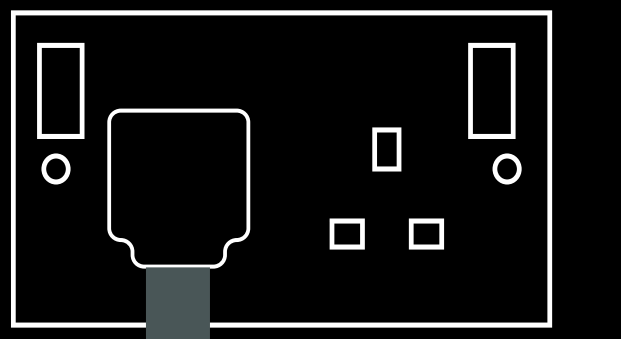


TRANSMITTER

MICRO USB

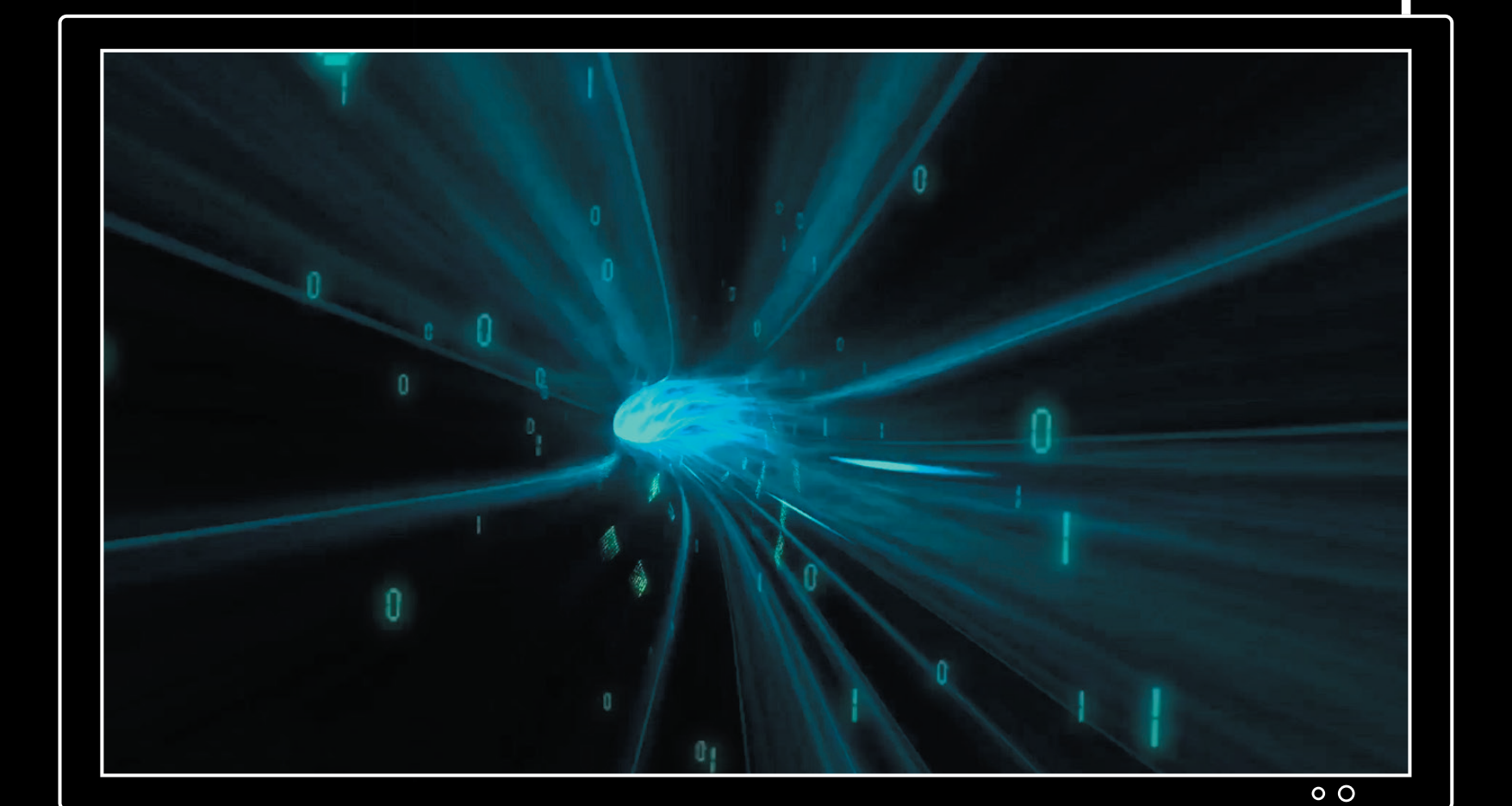
HDMI

CONNECT TO A POWER SOURCE - EITHER VIA
A MAINS WALL PLUG OR A USB 3 (1.0A OUTPUT)
SOCKET ON ANOTHER DEVICE

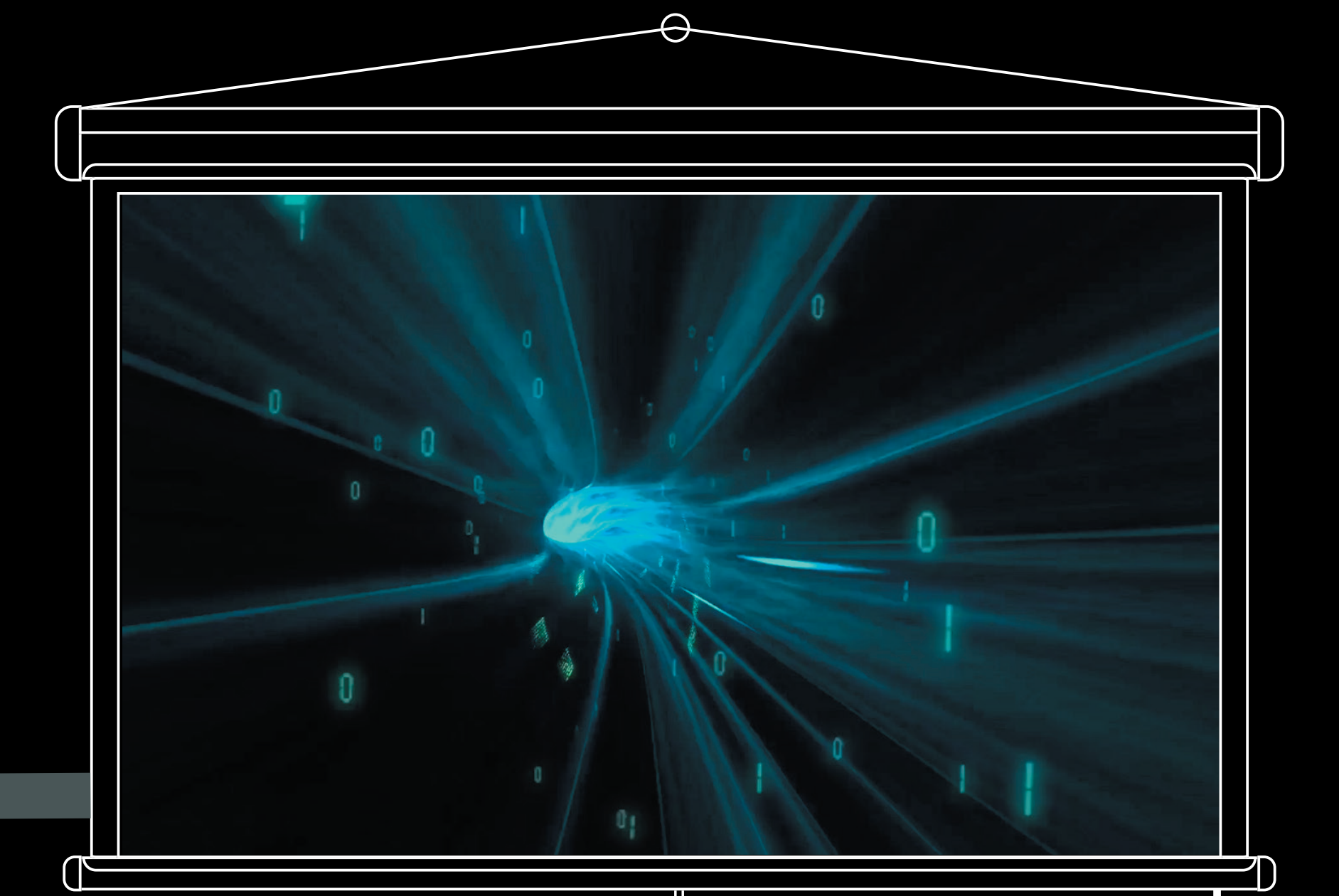


30M LINE OF SIGHT

SCREEN DISPLAY



TELEVISION
OR MONITOR



PROJECTOR