

CRUX

Digital Touch Kettle Instruction Manual

Styled for Life
Designed & Engineered in New York City

Thank you for Purchasing this Product

You may already be familiar with using a similar product, but do please take the time to read these instructions - they have been written to ensure you get the very best from your purchase.

Safety is Important

To ensure your safety and the safety of others, please ensure you read the Product Safety and Electrical Safety Information before you operate this product. Keep these instructions in a safe place for future reference.

Technical Information

Voltage/Frequency: 220-240V-50/60Hz 2520-3000W

Capacity: 1.5L

Table of Contents

Product Safety	2-5
Electrical Safety.....	6-7
Features.....	8
Digital Touch Temperature Control	9
Before Using For The First Time.....	9
Using your Digital Touch Kettle.....	10
Keep Warm Function.....	11
Boil-Dry Protection	11
Care & Cleaning Instructions	12-13
Servicing	13
Guarantee	14
Disposal Information.....	15

Product Safety

When using electrical appliances, basic safety precautions should be followed including the following: Read all instructions before use.

IMPORTANT

- This appliance can be used by children from 8 years and above and persons with reduced physical, sensory or mental capabilities or lack of experience or knowledge if they have been given supervision or instruction concerning use of the appliance in a safe way and understand the hazards involved. Children shall not play with appliance. Cleaning and user maintenance shall not be made by children without supervision.
- Always use this appliance on a stable, level surface, close to a power socket and out of reach of children.
- Always ensure that hands are dry before handling the plug or switching on the appliance.

- Always unplug this unit when not in use and before cleaning.
- Always carry out regular checks on the appliance and power cord. Should there be any signs of damage, do not attempt to use or repair. This appliance has no user serviceable parts.
- Always allow the appliance to fully cool down before cleaning or storing.
- Always exercise caution, this appliance produces heat and steam during use. Proper precautions must be taken to prevent burns and injury. Do not touch hot parts during use.
- Always ensure there is enough water in the kettle the cover the minimum level (0.5L).
- Always use caution when operating the kettle, do not place under wall cupboards as steam can damage such units’
- Always take care when opening the lid for refilling when the Kettle has recently boiled.

- Never immerse the appliance, cord or plug into water or any other liquid. This is to protect against electrical shock.
- Never use this appliance for other than intended use. This appliance is for household use only. Do not use outdoors.
- Never open the top cover while the kettle is boiling as scalding may occur.
- Never use your Kettle without any water in it.
- Never use any other liquids in this unit other than water, do not mix or add anything to the water placed in the appliance other than during cleaning.
- Never use this kettle with any other base; it must only be used with the base supplied.
- Never fill the kettle above the maximum level (1.5L) as boiling water may be ejected.
- Never allow young children to use this appliance, close supervision is necessary when this appliance is in use near children.

- Never let the power cord hang over the edge of a worktop, touch hot surfaces or become knotted, trapped or pinched.
- Never place the Kettle on or near heat sources.
- Never leave this appliance unattended during use.
- Never use steel wool or abrasive cleaners to clean the kettle as this will ruin the cosmetic finish.

Electrical Safety

Read these instructions thoroughly before using this appliance or connecting it to the mains supply.

A 13 amp BS1362 ASTA approved fuse must be fitted.

This appliance must be earthed.

There are no user-serviceable parts inside this appliance.

Always refer servicing to qualified service personnel.

The mains lead of this product is not replaceable by the user.

If the mains lead is damaged, the entire appliance should be returned to an approved Service Centre for repair.

Do not allow this product to be exposed to rain or moisture during use or storage.

Before switching on, make sure that the voltage of your electricity supply is the same as that indicated on the rating plate. Connecting it to any other power source may cause damage. The mains lead of this product is not replaceable by the user. If the mains lead is damaged, the entire appliance should be returned to the Customer Service Department or replaced by suitably qualified persons in order to avoid a hazard.

If the plug has to be changed because it is not suitable for your socket, or due to damage, it should be cut off and a replacement fitted, following the wiring instructions shown. The old plug must be disposed of safely because inserting it into a 13 amp socket could cause an electrical hazard.

The wires in the power cable of this product are coloured in accordance with the following code:

Blue = Neutral

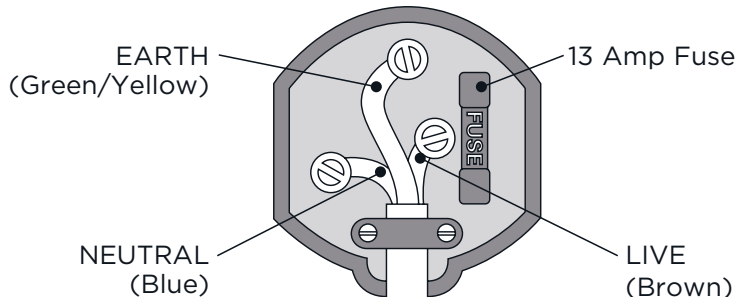
Brown = Live

Green/Yellow = Earth

If the markings on the terminals of your plug do not correspond to the colours of the wires in the power cable, proceed as follows:

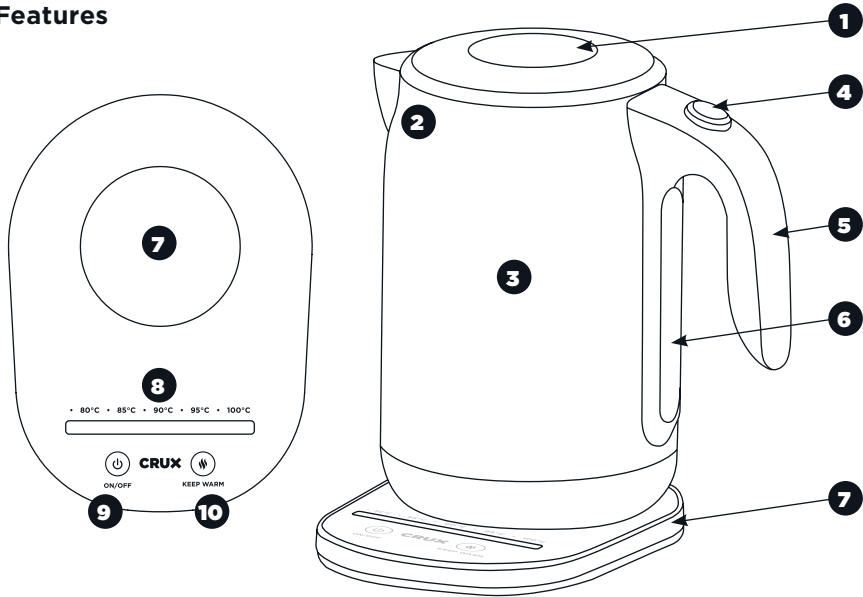
- The wire which is coloured **Blue** must be connected to the terminal which is marked **N** or coloured **Black**.
- The wire which is coloured **Brown** must be connected to the terminal which is marked **L** or coloured **Red**.
- The wire which is coloured **Green/Yellow** must be connected to the terminal which is marked with the earth symbol (\oplus) or coloured **Green**.

Plug should be BS1362/ASTA approved.
Fit a 13 Amp fuse.



Ensure that the outer sheath of the cable is firmly held by the clamp.

Features



Product may vary slightly from illustration

- | | | |
|--|--------------------------------|--|
| 1. Lid with viewing window | 4. Lid release button | 8. Digital touch slide temperature control |
| 2. Washable scale filter (not visible) | 5. Handle | 9. On/Off |
| 3. 1.5L Kettle | 6. Water reservoir window | 10. 30 minutes keep warm function |
| | 7. Multi-directional base unit | |

8

Digital Touch Temperature Control

Tea and coffee made using traditional kettles uses water at boiling point; however this is not always the ideal temperature to develop their unique flavours and aromas. Often temperature that is too high can scald the leaves of delicate teas such as green, white and oolong tea. It can also burn coffee which will make it bitter in taste. The benefit of a variable temperature control is that you can select your desired temperature depending on the type of beverage you desire.

70 - 80°C: Green Teas- Such as Gunpowder green, Jasmine, Matcha and Sencha

80 - 90°C: White Teas – Such as Sliver Needle and White Peony

90 - 95°C: Oolong Teas – Such as Tie Guan Yin and Taiwanese Milk Oolong
Coffee – all types including instant and ground coffee

100°C: Black Tea and Fruit teas

Before Using For The First Time

Carefully remove your Kettle from its box. Remove and discard any packaging material or promotional labels attached to your kettle. You may wish to keep the packaging for future use. Wipe the body with a soft damp cloth prior to use.

Fill the Kettle to the maximum level indicated by the water viewing window and bring to the boil at 100°C by following the “Using your Digital Touch Kettle” operating instructions

Once boiled pour this water away unused. Repeat the process. (Boiling a full Kettle of water twice and emptying each time ensures that the Kettle is completely clean). The maximum capacity of the Kettle is 1.5 litre (L).

Using your Digital Touch Kettle

1. To fill the kettle, remove it from the power base and open lid by pressing the lid release button. Fill with the desired amount of fresh tap or filtered water.

NOTE: Always fill the kettle between the minimum and the maximum marks on the water viewing window. If there is not enough water in the kettle, the kettle will switch off because the kettle is fitted with a boil dry protection. Filling above the maximum mark (MAX) may result in boiling water splashing from the kettle.

2. Close the lid and lock firmly in place. Place the kettle onto the base unit and insert the plug into a power socket.
3. Choose a temperature on the control panel by pressing the desired setting between 80-100°C, then press the ON/OFF button. The temperature bar will then illuminate blue as it progresses along the gauge.

NOTE: The kettle is pre-set to boil at 100° C, if no temperature is selected on the gauge and the ON/OFF button is selected this will automatically boil at 100°C

4. When the water reaches the desired temperature the kettle will beep three times and then switches off automatically. You can interrupt the boiling process at any time by pressing the ON/OFF button.
5. If you are making different beverages that require different temperatures such as 85°C and 100°C, the kettle can be re-boiled again to a higher temperature by simply selecting the higher temperature and pressing the ON/OFF button again.
6. To maintain your selected temperature press the KEEP WARM button after boiling.

Keep Warm Function

The Digital Touch Kettle has a keep warm function, this will keep your water at the desired temperature for 30 minutes, you can at any point remove the kettle from the base pour water and return it to the base unit, at which point it will continue to keep the water at your desired temperature. The keep warm function will automatically switch off after approximately 30 minutes.

1. When the kettle has reached your desired temperature, press the keep warm button which will illuminate and then the on/off button. The unit will beep, this is to show the keep warm function has been activated.
2. To turn off the keep warm function simply press the keep warm button.
3. If the keep warm function is left on for an extended period, the unit will switch off after approximately 30 minutes.

NOTE: Please ensure when making bottles for babies that the water is boiled to 100°C and the water is then allowed to cool to a suitable temperature. Do not use water that has not been boiled first as the water is not sterile.

Boil-Dry Protection

Should you accidentally switch on an empty Kettle, the boil dry protection will automatically switch off the power. If this occurs, allow the Kettle to cool down before filling with cold water.

Care and Cleaning

CLEANING

Before cleaning your Kettle, unplug it from the mains supply and allow it to cool down completely. Clean the outer surface with a soft damp cloth only.

Remove stubborn spots using a damp cloth and a small amount of mild detergent. To keep this Kettle in good condition NEVER use steel wool, chemical, or abrasive cleaners to clean the outside of the Kettle, it will scratch the surface and ruin the cosmetic finish. **DO NOT place the kettle or base unit into water or any other liquid. Wipe the base with a soft cloth only.**

When not in use or in storage, the power cable may be wound under the bottom of the Kettle. Do not use detergents or cleaning agents inside the Kettle (see below section 'Removing mineral deposits').

CLEANING THE FILTER

The filter is located just behind the spout.

Before removing or assembling the filter, switch the Kettle off and empty it. Allow it to cool completely then unplug the power base from the mains power supply.

Filter removal and reassembly

1. Open the lid and press the upper flat edge with your thumbs to release the two brackets then pull the removable filter upwards and remove from the kettle.
2. Rinse the filter in warm water and gently remove any scale with a soft brush, cloth or sponge.
3. To reassemble, insert the bottom of the filter onto the holding lug inside the Kettle then push it into position until it clips back into position. The filter will only fit one way.

REMOVING MINERAL DEPOSITS

Over a period of time lime scale can build up inside your kettle.

Regular cleaning every 6-8 weeks is essential to prevent lime scale build-up and prevent reducing the kettle's working life. More frequent cleaning will be required depending on the quality of water where you live and how often the kettle is used. Always switch off at the power socket and allow the appliance to cool completely before cleaning.

To remove lime scale use a suitable propriety kettle descalers which are available from leading supermarkets, department stores and hardware stores.

Alternatively, follow the steps below:

1. Half fill the kettle with water and add the juice of one lemon.
2. Boil the kettle and allow to stand for 15 minutes before discarding the water.
3. Repeat steps 1 and 2 several times using cold water only.

Servicing

If you drop or damage your Kettle it should not be used until it has been examined by an authorized Service Centre. Always refer servicing to qualified service personnel.

Guarantee

This product is guaranteed for 3 years from the date of original purchase against mechanical and electrical defects.

Please register at <http://mpl.direct/cruxwarranty> within 28 days of purchase.

Any defect that arises due to faulty materials or workmanship will either be replaced or refunded where possible during this period by the dealer from whom you purchased the unit.

The following conditions apply:

- The guarantee does not cover accidental damage, misuse, cabinet parts, knobs or consumable items.
- The product must be correctly installed and operated in accordance with the instructions contained in this manual.
- It must be used only for domestic purposes.
- The guarantee will be rendered invalid if the product is re-sold or has been damaged by inexperienced repair.
- Specifications are subject to change without notice.
- The manufacturer disclaims any liability for the incidental or consequential damages.
- The guarantee is in addition to, and does not diminish your statutory or legal rights.
- Valid in the UK only.

Customer Helpline: 0345 467 6743

Disposal Information

Waste electrical products should not be disposed of with household waste. Please recycle where facilities exist. Check with your local authority for recycling advice.



This symbol on appliance, instruction manual and packaging puts your attention to this important issue. The materials used in this appliance can be recycled. By recycling used domestic appliances you contribute an important push to the protection of our environment. Ask your local authorities for information regarding the point of recollection

For technical queries, please contact: MPL Home Ltd,
IMEX, 575 -599 Maxted Road, Hemel Hempstead, Herts, HP2 7DX

For customer service questions or comments
0345 467 6743
cruzkitchen.co.uk
 cruzkitchen

CRUX is a trademark of 8479950 Canada Inc.
All rights reserved.

SO-314386 Rev. 3