



**WIRELESS ALERT**

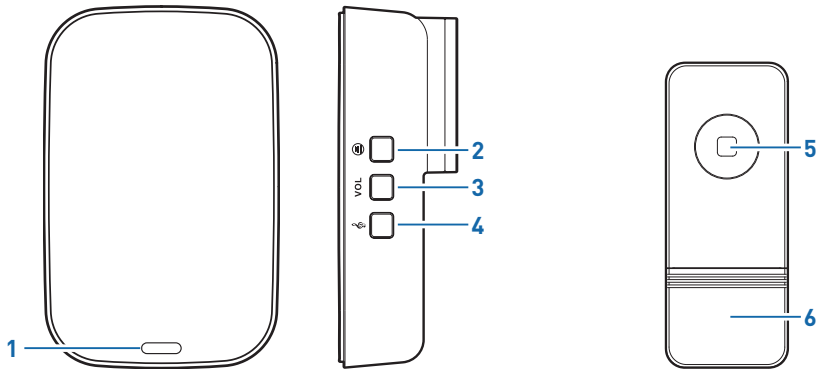
# Wireless Door Chime with Mains Power

**EN**

**INSTRUCTION MANUAL**

---

## PRODUCT OVERVIEW



### Chime Speaker

- |   |                    |   |                         |
|---|--------------------|---|-------------------------|
| 1 | LED Indicator      | 3 | VOL (Volume) Button     |
| 2 | ⊞ (Pairing) Button | 4 | 🎵 (Chime Select) Button |

### Doorbell

- |   |           |
|---|-----------|
| 5 | Button    |
| 6 | Nameplate |

## INSTALLING THE DOORBELL

1. Insert a small flat-head screwdriver into the small notch at the base of the Doorbell and lift slightly to remove the rear cover.
2. Install the supplied "CR2032" battery with the "+" symbol facing up. Make sure the battery is held down securely by the metal prongs.

*Note: When replacing the rear cover, make sure the rubber weather seal is in place.*

**WARNING: The Doorbell unit contains a coin/button cell battery. If the coin/button cell battery is swallowed, it can cause severe internal burns in just 2 hours and can lead to death. If the battery compartment does not close securely, stop using the product and keep it away from children. If you think the battery might have been swallowed or placed inside any part of the body, seek immediate medical attention.**

## INSTALLING THE CHIME SPEAKER


No wiring is necessary. Just plug the Chime Speaker into an easily accessible power point and switch the power point on. The Chime Speaker, upon receiving power, automatically goes into pairing mode for 10 seconds. Within this period, press the Doorbell button to pair the Doorbell with the Chime Speaker. You will hear the default chime played as confirmation.

If your Wireless Door Chime system comes with two Chime Speakers, simply repeat the above procedures to install the additional Chime Speaker.

*Note: To pair the Doorbell later, see "Pairing the Doorbell".*

## CHANGING THE CHIME

To change the chime that the Chime Speaker plays when someone presses the Doorbell button, follow the steps below:


1. Press the  button repeatedly on the Chime Speaker to cycle through the available sounds.
2. Stop when you hear a sound that you would like played the next time someone presses the Doorbell button.
3. Press the Doorbell button to test the chime.

## ADJUSTING THE CHIME SPEAKER VOLUME

The volume of the Chime Speaker is adjustable, if necessary, by pressing the **VOL** button until the desired volume level is obtained.

## PAIRING THE DOORBELL

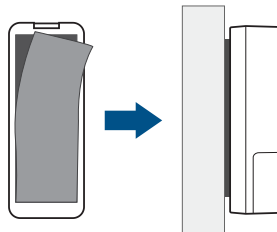
To pair the Doorbell with the Chime Speaker, follow the steps below:

1. Press the  button on the Chime Speaker.
2. Within 10 seconds, press the Doorbell button. The Chime Speaker sounds out the chime that is currently selected as confirmation.

The Chime Speaker can support a maximum of 5 Doorbells at any one time. Additional Doorbells are available for purchase separately.

## MOUNTING THE DOORBELL

The Doorbell can easily be mounted to the wall with the included double-sided adhesive tape. The operating distance between the Chime Speaker and the Doorbell is up to 50m/165ft but the range may vary depending on local conditions.



*Note: The Doorbell is not suitable for mounting on metal surfaces and UPVC doorframes as these materials will interfere with the Doorbell's ability to communicate with the Chime Speaker.*

## Technical Support

All Countries E-mail: [tech@swann.com](mailto:tech@swann.com)

## Telephone Helpdesk

USA 1800 627 2799

NEW ZEALAND 0800 479 266

AUSTRALIA 1800 788 210

UK 0808 168 9031

## Limited Warranty Terms & Conditions

Swann Communications warrants this product against defects in workmanship and material for a period of one (1) year from its original purchase date. You must present your receipt as proof of date of purchase for warranty validation. Any unit which proves defective during the stated period will be repaired without charge for parts or labour or replaced at the sole discretion of Swann. The end user is responsible for all freight charges incurred to send the product to Swann's repair centres. The end user is responsible for all shipping costs incurred when shipping from and to any country other than the country of origin.

The warranty does not cover any incidental, accidental or consequential damages arising from the use of or the inability to use this product. Any costs associated with the fitting or removal of this product by a tradesman or other person or any other costs associated with its use are the responsibility of the end user. This warranty applies to the original purchaser of the product only and is not transferable to any third party. Unauthorized end user or third party modifications to any component or evidence of misuse or abuse of the device will render all warranties void.

By law some countries do not allow limitations on certain exclusions in this warranty. Where applicable by local laws, regulations and legal rights will take precedence.

For Australia: Our goods come with guarantees which cannot be excluded under Australian Consumer Law. You are entitled to a replacement or refund for a major failure and for compensation for any other reasonably foreseeable loss or damage. You are also entitled to have the goods repaired or replaced if the goods fail to be of acceptable quality and the failure does not amount to major failure.

## Battery Safety Information

Replace batteries at the same time. Do not mix new and old batteries or battery types (for example, alkaline and lithium batteries). Keep batteries out of reach of children. Dispose of used batteries promptly in accordance with local regulations.

## FCC Notice

This equipment has been tested and found to comply with the limits for Class B digital device, pursuant to part 15 of the FCC Rules. These limits are designed to provide reasonable protection against harmful interference in a residential installation. This equipment generates, uses and can radiate radio frequency energy and, if not installed and used in accordance with the instructions, may cause harmful interference to radio communications. However, there is no guarantee that interference will not occur in a particular installation. If this equipment does cause harmful interference to radio or television reception, which can be determined by turning the equipment off and on, the user is encouraged to try to correct the interference by one or more of the following measures:

- Reorient or relocate the receiving antenna
- Increase the separation between the equipment and the receiver
- Connect the equipment into an outlet on a circuit different from that to which the receiver is connected
- Consult the dealer or an experienced radio/TV technician for help

WARNING: Modifications not approved by the party responsible for compliance could void user's authority to operate the equipment.

