



B2442dw

Productivity. Reliability. Value.



B2442dw with optional tray



We back this product with a guarantee that covers repair actions including the cost of spare parts in the first four years.* The guarantee also offers you free 24-hour self-help online support and access to technical support by phone during working hours.



*Offer applies if the product is registered within 90 days from the date of purchase. Supplies and/or consumable parts, such as fuser or transfer unit, are excluded. Please refer to the detailed terms and conditions available at lexmark.com/myguarantee.

Lexmark B2442dw

Packed with features, the Lexmark B2442dw offers exceptional value in small-workgroup mono printing with standard two-sided output, enhanced security and built-in durability. Its multi-core processor supports output at up to 40 pages per minute *, whilst long-lasting printing components reduce downtime. Plus, you can connect via standard USB, gigabit ethernet or Wi-Fi.



Get more done

- ▶ Tackle your printing workload with the power of a 1-GHz dual-core processor and 512 MB of memory.
- ▶ Get up to 40-page-per-minute printing.
- ▶ A two-line LCD lets you configure, interact and monitor vital system information.
- ▶ Use media sizes from A6 to legal via the paper tray, plus smaller media and envelopes via the 100-sheet multipurpose feeder.

Ready when you are

- ▶ Long-life fuser and imaging components extend uptime.
- ▶ Unison™ Toner replacement cartridges deliver up to 6,000 pages** of high-quality printing.
- ▶ Maximum input capacity of 900 pages means fewer interruptions.
- ▶ Durable metal frame is designed for longevity.

Robust, built-in security

- ▶ Lexmark's full-spectrum security architecture helps keep your information safe - on the document, the device, over the network, and everywhere in between.
- ▶ A range of embedded features harden the device against attacks.
- ▶ Standard Confidential Print feature helps ensure output security via simple PIN.
- ▶ Keypoint Intelligence - Buyers Lab honoured Lexmark with a prestigious BLI PaceSetter award for Document Imaging Security***.



Built for planet earth

- ▶ Energy management features reduce power consumption in active use or sleep mode.
- ▶ Standard two-sided printing saves paper.
- ▶ Use of post-consumer recycled content in manufacturing saves natural resources.
- ▶ Device is rated EPEAT® Silver and ENERGY STAR® certified.
- ▶ Recycle cartridges through the award-winning Lexmark Cartridge Collection Programme (LCCP).

*Print and copy speeds measured in accordance with ISO/IEC 24734 and ISO/IEC 24735 respectively (ESAT). For more information see: www.lexmark.com/ISOspeeds.

**Average standard page yield value declared in accordance with ISO/IEC 19752.

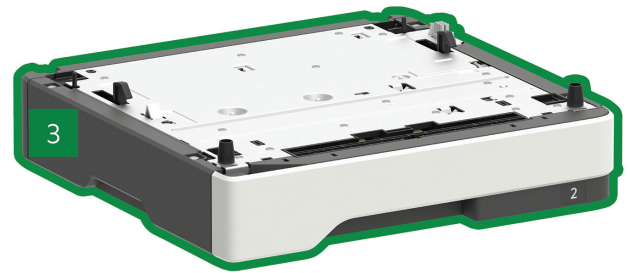
***Award based on Western Europe data

Lexmark B2442dw



- 1 B2442dw with 2-line display
10.2 x 15.7 x 14.7 inches
260 x 399 x 374 mm
- 2 550-sheet tray
5 x 15.7 x 14.7 inches
126 x 389 x 374 mm

or



- 3 250-sheet tray
3.7 x 15.7 x 14.7 inches
95 x 389 x 374 mm

■ Standard

■ Optional

Supports one optional tray.

© 2018 Lexmark. All rights reserved.

Lexmark, the Lexmark logo and Unison are trademarks of Lexmark International, Inc., registered in the United States and/or other countries. AirPrint and the AirPrint Logo are trademarks of Apple, Inc. ENERGY STAR® is a U.S. registered mark. EPEAT® is a trademark of EPEAT, Inc. in the United States and other countries. Google Cloud Print is a trademark of Google, Inc. MOPRIA®, the Mopria® Logo™ and the Mopria® Alliance logos are trademarks, service marks, and certification marks of Mopria Alliance, Inc. in the United States and other countries. All other trademarks are the property of their respective owners.

This product includes software developed by the OpenSSL Project for use in the Open SSL Toolkit ([http:// www.openssl.org/](http://www.openssl.org/)).

Product specifications
Lexmark B2442dw
Printing

Display	2-line 128 x 32 pixel All Points Addressable (APA) monochrome OLED display
Print Speed: Up to ⁶	Black: 40 ppm
Time to First Page: As fast as	Black: 6.25 seconds
Print Resolution	Black: 1200 Image Quality, 1200 x 1200 dpi, 2400 Image Quality, 300 x 300 dpi, 600 x 600 dpi
Memory / Processor	standard: 512 MB / maximum: 512 MB / 1.0 GHz MHz
Hard Disk	Not Available
Recommended Monthly Page Volume ²	1,000 - 10,000 Pages
Maximum Monthly Duty Cycle: Up to ³	100,000 pages per month

Supplies⁷

Laser Cartridge Yields (up to) ¹	3,000-page Cartridge, 6,000-page High Yield Cartridge
Imaging Unit Estimated Yield: Up to	60,000 pages, based on 3 average letter/A4-size pages per print job and ~ 5% coverage
Cartridge(s) Shipping with Product ¹	2,500-page Starter Return Programme Toner Cartridge

Paper Handling

Included Paper Handling	250-Sheet Input, 100-Sheet Multipurpose Feeder, 150-Sheet Output Bin, Integrated Duplex
Optional Paper Handling	250-Sheet Tray, 550-Sheet Tray, 550-Sheet Lockable Tray
Paper Input Capacity: Up to	Standard: 350 pages 75 gsm bond / Maximum: 900 pages 75 gsm bond
Paper Output Capacity: Up to	Standard: 150 pages 75 gsm bond / Maximum: 150 pages 75 gsm bond
Media Types Supported	Card Stock, Envelopes, Paper Labels, Plain Paper, Transparencies, Refer to the Paper & Specialty Media Guide
Media Sizes Supported	10 Envelope, 7 3/4 Envelope, 9 Envelope, A4, A5, DL Envelope, Executive, Folio, JIS-B5, Legal, Letter, Statement, Universal, Oficio, A6

General Information⁴

Standard Ports	USB 2.0 Specification Hi-Speed Certified (Type B), Gigabit Ethernet (10/100/1000), 802.11b/g/n Wireless
Noise Level: Operating	Print: 55 dBA
Specified Operating Environment	Temperature: 16 to 32°C (60 to 90°F), Humidity: 8 to 80% Relative Humidity, Altitude: 0 - 5,000 Metres (16,404 Feet)
Product Guarantee ⁸	4-year guarantee (upon registration)
Size (mm - H x W x D) / Weight	260 x 399 x 374 mm / 14.0 kg
Part Number	36SC228

All information in this brochure is subject to change without notice. Lexmark is not liable for any errors or omissions.

¹Average standard page yield value declared in accordance with ISO/IEC 19752. ²"Recommended Monthly Page Volume" is a range of pages that helps customers evaluate Lexmark's product offerings based on the average number of pages customers plan to print on the device each month. Lexmark recommends that the number of pages per month be within the stated range for optimum device performance, based on factors including: supplies replacement intervals, paper loading intervals, speed, and typical customer usage. ³"Maximum Monthly Duty Cycle" is defined as the maximum number of pages a device could deliver in a month using a multishift operation. This metric provides a comparison of robustness in relation to other Lexmark printers and MFPs. ⁴Printers are sold subject to certain license/agreement conditions. See www.lexmark.com/printerlicense for details. ⁵Actual Yield may vary based on other factors such as device speed, paper size and feed orientation, toner coverage, tray source, percentage of black-only printing and average print job complexity. ⁶Print and copy speeds measured in accordance with ISO/IEC 24734 and ISO/IEC 24735 respectively (ESAT). For more information see: www.lexmark.com/ISOspeeds. ⁷Product functions only with replacement cartridges designed for use in a specific geographical region. See www.lexmark.com/regions for more details. ⁸Offer applies if the product is registered within 90 days from the date of purchase. Supplies and/or consumable parts, such as fuser or transfer unit, are excluded. Please refer to the detailed terms and conditions available at lexmark.com/myguarantee.