

# PHILIPS

LCD monitor with  
PowerSensor

Brilliance

B Line

22 (21.5"/54.6 cm diag.)

Full HD (1920 x 1080)

221B7QPJEB



## Crisp views, efficient performance with PowerSensor

The Philips PowerSensor display using 85% post consumer recycled plastics and PVC, BFR-free housing is ideal for eco-friendly productivity

### Brilliant performance

- IPS technology for full colours and wide viewing angles
- Narrow-border display for a seamless appearance
- SmartImage pre-sets for easy optimised image settings

### Designed for comfortable productivity

- LowBlue Mode for easy-on-the-eyes productivity
- Less eye fatigue with Flicker-Free technology
- SmartErgoBase enables user-friendly ergonomic adjustments

### Features for the way you work

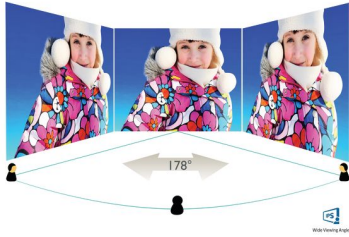
- Built-in stereo speakers for multimedia
- USB 3.0 enables fast data transfers and smart phone charging
- SmartConnect with DisplayPort, HDMI and VGA connections

### Sustainable Eco-design

- PowerSensor saves up to 80% energy costs
- 85% post consumer recycled plastics with TCO Edge

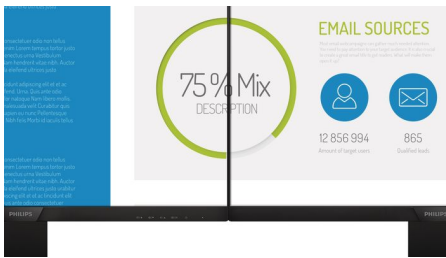
# Highlights

## IPS technology



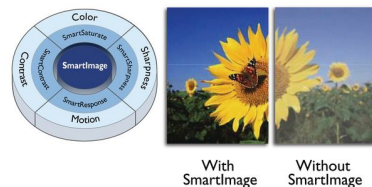
IPS displays use advanced technology that gives you extra-wide viewing angles of 178/178 degrees, making it possible to view the display from almost any angle — even in 90-degree Pivot mode! Unlike standard TN panels, IPS displays gives you remarkably crisp images with vivid colours, making it ideal not only for Photos, films and web browsing, but also for professional applications that demand colour accuracy and consistent brightness at all times.

## Ultra-narrow Border



The new Philips displays feature ultra-narrow borders which allow for minimal distractions and maximum viewing size. Especially suited for multi-display or tiling setups like gaming, graphic design and professional applications, the ultra-narrow border display gives you the feeling of using one large display.

## SmartImage



SmartImage is an exclusive leading edge Philips technology that analyses the content displayed on your screen and optimises your display performance. This user-friendly interface allows you to select various modes, like Office, Photo, Movie, Game, Economy etc.,

to fit the application in use. Based on the selection, SmartImage dynamically optimises the contrast, colour saturation and sharpness of images and videos for ultimate display performance. The Economy mode option offers you major power savings. All in real time at the touch of a single button!

## LowBlue Mode



Studies have shown that just as ultra-violet rays can cause eye damage, shortwave-length blue light rays from LED displays can cause eye damage and affect vision over time. Developed for wellbeing, the Philips LowBlue Mode setting uses a smart software technology to reduce harmful shortwave blue light.

## Flicker-Free technology



Due to the way brightness is controlled on LED-backlit screens, some users experience flicker on their screen which causes eye fatigue. Philips Flicker-Free technology applies a new solution to regulate brightness and reduce flicker for more comfortable viewing.

## SmartErgoBase



The SmartErgoBase is a monitor base that delivers ergonomic display comfort and provides cable management. The user-friendly

height, swivel, tilt and rotation angle adjustments of the base allow the monitor to be positioned for maximum comfort to help ease the physical strains of a long workday. In addition, cable management reduces cable clutter and keeps the workspace neat and professional.

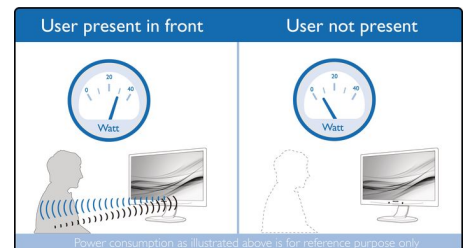
## Built-in stereo speakers

A pair of high-quality stereo speakers built into a display device. They may be visible front firing, or invisible down firing, top firing, rear firing etc. depending on model and design.

## SmartConnect

With a plethora of connectivity, these Philips displays come equipped with multiple connections like VGA, Display Port and universal HDMI connector, enabling you to enjoy high-resolution uncompressed video and audio content. USB connections ensure that you can have super-speed data transfers while having global connectivity. Regardless of what source you use, you can rest assured that this Philips display will ensure your investment is not made obsolete any time soon!

## PowerSensor



PowerSensor is a built-in 'people sensor' that transmits and receives harmless infrared signals to determine if the user is present and then automatically reduces monitor brightness when the user steps away from the desk, cutting energy costs by up to 80 percent and prolonging monitor life



# Specifications

## Picture/Display

**LCD panel type:** IPS technology  
**Backlight type:** W-LED system  
**Panel Size:** 21.5 inch/54.6 cm  
**Effective viewing area:** 476.1 (H) x 267.8 (V)  
**Aspect ratio:** 16:9  
**Optimum resolution:** 1920 x 1080 @ 60 Hz  
**Response time (typical):** 5 ms (Grey to Grey)\*  
**Brightness:** 250 cd/m<sup>2</sup>  
**Contrast ratio (typical):** 1000:1  
**SmartContrast:** 20,000,000:1  
**Pixel pitch:** 0.248 x 0.248 mm  
**Viewing angle:** 178° (H)/178° (V), @ C/R > 10  
**Flicker-free**  
**Picture enhancement:** SmartImage  
**Display colours:** 16.7 M  
**Scanning Frequency:** 30 - 83 kHz (H) / 56 - 76 Hz (V)  
**sRGB**

## Connectivity

**Signal Input:** VGA (Analogue), DisplayPort 1.2, HDMI 1.4  
**USB:** USB 3.0 x 2 (1 w/fast charging)\*  
**Sync Input:** Separate Sync, Sync on Green  
**Audio (In/Out):** PC audio-in, Headphone out

## Convenience

**Built-in Speakers:** 2 W x 2  
**User convenience:** SmartImage, Input, PowerSensor, Menu, Power On/Off, LowBlue Mode  
**Control software:** SmartControl  
**OSD Languages:** Brazil Portuguese, Czech, Dutch, English, Finnish, French, German, Greek, Hungarian, Italian, Japanese, Korean, Polish, Portuguese, Russian, Simplified Chinese, Spanish, Swedish, Traditional Chinese, Turkish, Ukrainian  
**Other convenience:** Kensington lock, VESA mount (100 x 100 mm)  
**Plug and Play Compatibility:** DDC/CI, Mac OS X, sRGB, Windows 10 / 8.1 / 8 / 7

## Stand

**Height adjustment:** 130 mm  
**Pivot:** 90 degree  
**Swivel:** -175/+175 degree  
**Tilt:** -5/20 degree

## Power

**ECO mode:** 10.7 W (typ.)  
**On mode:** 14.6 W (typ.) (EnergyStar 7.0 test method)  
**Standby mode:** <0.3 W (typ.)  
**Off mode:** Zero watts with Zero switch  
**Power LED indicator:** Operation - White, Standby mode - White (flashing)  
**Power supply:** Built-in, 100-240 VAC, 50-60 Hz

## Dimensions

**Product with stand (max height):** 490 x 473 x 220 mm  
**Product without stand (mm):** 490 x 302 x 52 mm  
**Packaging in mm (W x H x D):** 552 x 464 x 187 mm

## Weight

**Product with stand (kg):** 5.08 kg  
**Product without stand (kg):** 2.98 kg  
**Product with packaging (kg):** 7.05 kg

## Operating conditions

**Temperature range (operation):** 0°C to 40°C °C  
**Temperature range (storage):** -20°C to 60°C °C  
**Relative humidity:** 20%-80% %  
**Altitude:** Operation: +12,000 ft (3658 m), Non-operation: +40,000 ft (12,192 m)  
**MTBF (demonstrated):** 70,000 hrs (excluded backlight)

## Sustainability

**Environmental and energy:** PowerSensor, EnergyStar 7.0, EPEAT Gold\*, TCO edge, RoHS  
**Recyclable packaging material:** 100 %  
**Post-consumer recycled plastic:** 85%  
**Specific Substances:** PVC/BFR free housing, Mercury free, Lead free

## Compliance and standards

**Regulatory Approvals:** CE Mark, FCC Class B, SEMKO, cETLus, CU-EAC, TCO edge, TUV Ergo, TUV/GS, WEEE, EPA, ICES-003, KUCAS, SASO, UKRAINIAN

## Cabinet

**Front bezel:** Black  
**Rear cover:** Black  
**Foot:** Black  
**Finish:** Texture

## Web navigation

**Hotel TV:** N/A

## What's in the box?

**Monitor with stand**

**Cables:** D-Sub cable, DP cable, Audio cable, Power cable

**User Documentation**

