

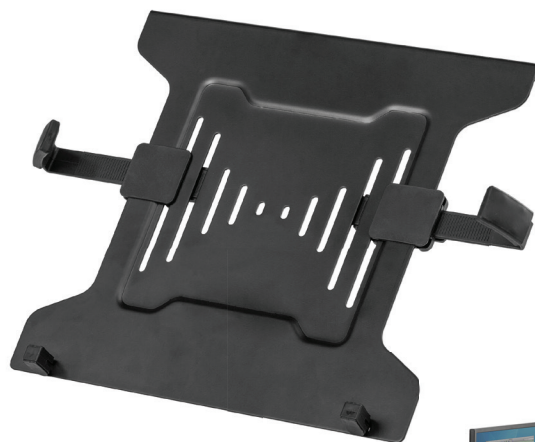
# MONITOR ARM

## Laptop Accessory



### Features:

- Attach your laptop to a monitor arm to increase desk space and position your laptop ergonomically, reducing eye, neck and shoulder strain.
- Adjustable brackets to keep your laptop secure.
- Cooling vents to avoid your laptop overheating.
- Easily attach to any VESA compatible monitor arm (75 x 75 / 100 x 100)



### Specifications:

Code	8044101
Colour	Black: RAL 9017
Product Dimensions (H x W x D)	279.4 x 442.9 x 65.1mm
Product Weight	1.18kg
Weight Capacity (kg)	4.5kg
Maximum Laptop Size	17" ( 43.18cm)
Outer Pack Barcode (SCS)	50043859728010
Warranty	3 years limited