

Fellowes

POWERSHRED® 73Ci

THE WORLD'S **TOUGHEST** SHREDDERS™



Please read these instructions before use.
Do not discard: keep for future reference.

Fellowes

Quality Office Products Since 1917



KEY

- | | |
|----------------------------|---------------------------|
| A. See safety instructions | G. Control Panel and LEDs |
| B. Paper entry | ◀◀ 1. Reverse (blue) |
| C. SafeSense® Technology | ⏻ 2. ON/OFF (blue) |
| D. Pullout bin | ▶▶ 3. Forward (blue) |
| E. Casters | 🗑️ 4. Bin full (red) |
| F. Disconnect power switch | 🔌 5. Bin open (red) |
| ○ 1. OFF | |
| ⏻ 2. ON | |

- 6. SafeSense® indicator (yellow)
- 7. Remove Paper (red)
- 8. Overheat (red)



- Control panel features multi-touch back-lit controls
- When shredder is off, control panel will not be visible

CAPABILITIES

Will shred: Paper, credit cards, staples, small paper clips and CD/DVDs

Will not shred: Adhesive labels, continuous form paper, transparencies, newspaper, cardboard, laminates, large paper clips, file folders, X-rays or plastic other than noted above

Paper shred size:

Cross-Cut 4mm x 38mm

Maximum:

Sheets per pass 12*
 CDs/Cards per pass 1*
 Paper entry width 230mm

*A4 (70g), paper at 220-240V, 50/60 Hz, 2.0Amps; heavier paper, humidity or other than rated voltage may reduce capacity. Maximum recommended daily usage rates: 300 sheets, 25 credit cards; 10 CD/DVDs 12 sheets per pass.

Fellowes SafeSense® shredders are designed to be operated in home and office environments ranging between 50 – 80 degrees Fahrenheit (10 – 26 degrees Celsius) and 40 – 80% relative humidity.

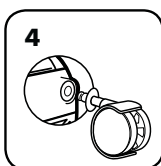
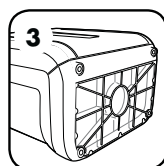
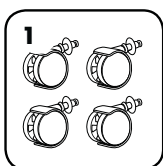
⚠️ WARNING: IMPORTANT SAFETY INSTRUCTIONS — Read Before Using!



- Operation, maintenance, and service requirements are covered in the instruction manual. Read the entire instruction manual before operating shredders.
- Keep away from children and pets. Keep hands away from paper entry. Always set to off or unplug when not in use.
- Keep foreign objects – gloves, jewelry, clothing, hair, etc. – away from shredder openings. If object enters top opening, switch to Reverse (◀◀) to back out object.
- Never use aerosol products, petroleum based lubricants or other flammable products on or near shredder. Do not use canned air on shredder.
- Do not use if damaged or defective. Do not disassemble shredder. Do not place near or over heat source or water.
- This shredder has a Disconnect Power Switch (F) that must be in the ON (⏻) position to operate shredder. In case of emergency, move switch to OFF (○) position. This action will stop shredder immediately.
- Avoid touching exposed cutting blades under shredder head.
- Shredder must be plugged into a properly grounded wall outlet or socket of the voltage and amperage designated on the label. The grounded outlet or socket must be installed near the equipment and easily accessible. Energy converters, transformers, or extension cards should not be used with this product.
- FIRE HAZARD – Do NOT shred greeting cards with sound chips or batteries.
- For indoor use only.
- Unplug shredder before cleaning or servicing.

BASIC SET UP

CASTER INSTALLATION

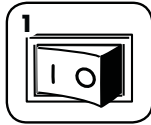


BASIC SHREDDING OPERATION

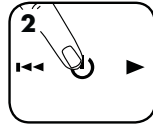


Continuous operation:
10-minute maximum
NOTE: Shredder runs briefly after each pass to clear entry. Continuous operation beyond 10-minutes will trigger 20-minute cool down period.

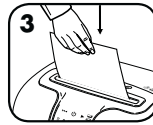
PAPER OR CD/CARD



1 Plug in and put disconnect power switch in ON (I) position

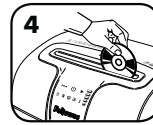


2 Press (ON) ON to activate (blue)

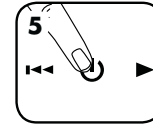


3 Feed paper straight into paper entry and release

or



4 Hold CD/card at edge, feed right side of entry and release



5 When finished shredding set to OFF (O)

ADVANCED PRODUCT FEATURES



Jam Proof System
Eliminates paper jams and powers through tough jobs.



Patented SafeSense® Technology
Stops shredding immediately when hands touch the paper opening



Energy Saving System
Optimal energy efficiency 100% of the time – in use and out of use.



JAM PROOF SYSTEM OPERATION*

Eliminates paper jams and powers through tough jobs.

1 Advanced Jam Prevention- Electronically measures paper thickness to prevent paper jams:



Up to RED: Too many sheets have been inserted.

Up to YELLOW: Productivity is optimized.

Up to GREEN: More sheets can be added.

2 Remove several sheets until indicator is below red.

3 Continue 100% Jam Proof Shredding

If a misfeed occurs: All indicators light up and shredder pauses for 3-6 seconds

Wait for flashing to stop after automatic correction is complete. Regular shredding will resume.

If illuminates after paper has been reversed, press reverse and remove paper. Otherwise, regular shredding will resume.

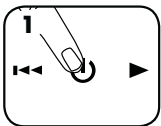
*100% Jam Proof when used in accordance with user manual



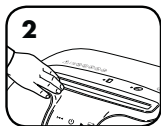
SAFESENSE® TECHNOLOGY

Stops shredding immediately when hands touch the paper opening.

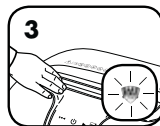
SET-UP AND TESTING



1 Turn the shredder ON (ON) to activate SafeSense®



2 Touch test area and look for the SafeSense® indicator to illuminate



3 SafeSense® is active and working properly



ENERGY SAVING SYSTEM

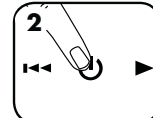
Optimal energy efficiency 100% of the time – in use and out of use.

- Saves energy in four ways: energy-efficient electronics, jam prevention, standby mode and sleep mode.
- Sleep Mode shuts down shredder after 2 minutes of inactivity.

WHEN IN SLEEP MODE



1 In sleep mode



2 To get out of sleep mode touch control panel



3 insert paper

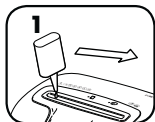
For more information about all of Fellowes Advanced Product Features go to www.fellowes.com

PRODUCT MAINTENANCE

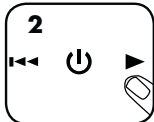
OILING SHREDDER

All cross-cut shredders require oil for peak performance. If not oiled, a machine may experience diminished sheet capacity, intrusive noise when shredding, and could ultimately stop running. To avoid these problems, we recommend you oil your shredder each time you empty your waste bin.


FOLLOW OILING PROCEDURE BELOW AND REPEAT TWICE



*Apply oil across entry



Press and hold forward
(▶) 2-3 seconds

CAUTION *Only use a non-aerosol vegetable oil in long nozzle container such as Fellowes 35250 

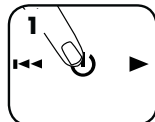
Go to Support Section at www.fellowes.com or see back page of manual for useful telephone numbers.

CLEANING AUTO-START INFRARED SENSORS

Paper detection sensors are designed for maintenance free operation. However, on rare occasions the sensors may become blocked by paper dust causing the motor to run even if there is no paper present.

(Note: two paper detection sensors are located in the center of the paper entry).

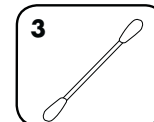
TO CLEAN THE SENSORS



Turn off and unplug
shredder



Locate Auto-start
infrared sensor





Dip cotton swab in
rubbing alcohol




Using cotton swab, wipe
away any contamination
from the paper sensors

TROUBLESHOOTING

 **Overheat Indicator:** When the Overheat Indicator is illuminated, the shredder has exceeded its maximum operating temperature and needs to cool down. This indicator will remain illuminated and the shredder will not operate for the duration of the recovery time. See Basic Shredding Operation for more information about the continuous operation and recovery time for this shredder.

 **Bin Open:** The shredder will not run if the bin is open. When illuminated, close the bin to resume shredding.

 **Bin Full:** When illuminated, the shredder waste bin is full and needs to be emptied. Use Fellowes waste bag 36052.

 **Remove Paper:** When illuminated, press reverse (◀◀) and remove paper. Reduce paper quantity to an acceptable amount and refeed into paper entry.

 **SafeSense® Indicator:** If hands are too close to the paper entry, the SafeSense® indicator will illuminate and the shredder will stop shredding. If SafeSense® is active for 3 seconds, the shredder will automatically turn off and the user must press the power button on the control panel to resume shredding.

LIMITED PRODUCT WARRANTY

Limited Warranty: Fellowes, Inc. ("Fellowes") warrants the parts of the machine to be free of defects in material and workmanship and provides service and support for 2 years from the date of purchase by the original consumer. Fellowes warrants the cutting blades of the machine to be free from defects in material and workmanship for 5 years from the date of purchase by the original consumer. If any part is found to be defective during the warranty period, your sole and exclusive remedy will be repair or replacement, at Fellowes' option and expense, of the defective part. This warranty does not apply in cases of abuse, mishandling, failure to comply with product usage standards, shredder operation using an improper power supply (other than listed on label), or unauthorized repair. Fellowes reserves the right to charge the consumers for any

additional costs incurred by Fellowes to provide parts or services outside of the country where the shredder is initially sold by an authorized reseller. ANY IMPLIED WARRANTY, INCLUDING THAT OF MERCHANTABILITY OR FITNESS FOR A PARTICULAR PURPOSE, IS HEREBY LIMITED IN DURATION TO THE APPROPRIATE WARRANTY PERIOD SET FORTH ABOVE. In no event shall Fellowes be liable for any consequential or incidental damages attributable to this product. This warranty gives you specific legal rights. The duration, terms, and conditions of this warranty are valid worldwide, except where different limitations, restrictions, or conditions may be required by local law. For more details or to obtain service under this warranty, please contact us or your dealer.

Australia Residents Only:

Our goods come with guarantees that cannot be excluded under the Australian Consumer Law. You are entitled to a replacement or refund for a major failure and for compensation for any other reasonably foreseeable loss or damage. You are also entitled to have the goods repaired or replaced if the goods fail to be of acceptable quality and the failure does not amount to a major failure. The benefits under Fellowes' Warranty are in addition to other rights and remedies under a law in relation to the shredder.



POWERSHRED® 73Ci

THE WORLD'S **TOUGHEST** SHREDDERS™

Declaration of Conformity

Fellowes Manufacturing Company

Yorkshire Way, West Moor Park, Doncaster, South Yorkshire, DN3 3FB, England declares that the product Model 73Ci conforms with the requirements of the Restriction of Hazardous Substances Directive (2002/95/EC), the Low Voltage Directive (2006/95/EC) and the Electromagnetic Compatibility Directive (2004/108/EC) and the following harmonized European Names (EN Standards) and IEC Standards.

Safety: EN 60950-1(ed.2): A11

EMC Standard: EN 55014-1 EN 55014-2 EN 61000-3-2 EN 61000-3-3

Year Affixed: 12

Itasca, Illinois, USA
April 1, 2012

James Fellowes

W.E.E.E.

This product is classified as Electrical and Electronic Equipment. Should the time come for you to dispose of this product please ensure that you do so in accordance with the European Waste of Electrical and Electronic Equipment (WEEE) Directive and in compliance with local laws relating to this directive.

For more information on the WEEE Directive please visit www.fellowesinternational.com/WEEE

Questions or Concerns?

www.fellowes.com

- Troubleshooting
- Registration
- Manuals

Customer Service & Support

- Troubleshooting
- Replacement parts
- General questions

Australia	+1-800-33-11-77
Europe	00-800-1810-1810
United Kingdom	+44-(0)-1302-836836
United States	+1-800-955-0959