

Fellowes

WORK BETTER™

Powershred® 46Ms The World's Toughest Shredders™



PLEASE READ THESE INSTRUCTIONS BEFORE USE.
DO NOT DISCARD: KEEP FOR FUTURE REFERENCE.



KEY

- | | |
|--|--|
| <p>A. ON/OFF switch
 ○ 1. OFF
 — 2. ON</p> <p>B. SafeSense® Technology</p> <p>C. Paper entry</p> <p>D. Pull-out bin</p> <p>E. Window</p> <p>F. Casters</p> <p>G. CD/card entry</p> <p>H. See safety instructions</p> | <p>I. Control Panel and LEDs</p> <p>○ 1. ON/OFF (blue)</p> <p>🔥 2. Overheat (red)</p> <p>🗑️ 3. Bin full (red)</p> <p>📄 4. Remove Paper (red)</p> <p>🛡️ 5. SafeSense® indicator (red)</p> <p>⏪ 6. Reverse</p> <p>⏩ 7. Forward</p> |
|--|--|

CAPABILITIES

Will shred: Paper, plastic credit cards, CD/DVDs and staples

Will not shred: Adhesive labels, continuous form paper, transparencies, newspaper, cardboard, laminates, paper clips, file folders, X-rays or plastic other than noted above

Paper/card shred size:

Micro-Cut 2mm x 14mm

CD shred size:

Strip-Cut 30mm

Maximum:

Sheets per pass 12*
 Cards/CDs per pass 1*
 Paper entry width 220mm
 CD entry width 124mm

*A4 (70g), paper at 220V-240V, 50/60 Hz, 1.5Amps; heavier paper, humidity or other than rated voltage may reduce capacity. Maximum recommended daily usage rates: 400 sheets per day; 25 credit cards; 10 CDs. 🖨️ 12 sheets per pass to avoid jams.

Fellowes SafeSense® shredders are designed to be operated in home and office environments ranging between 50 – 80 degrees Fahrenheit (10 – 26 degrees Celsius) and 40 – 80% relative humidity.

⚠️ WARNING: IMPORTANT SAFETY INSTRUCTIONS — Read Before Using!



- Operation, maintenance, and service requirements are covered in the instruction manual. Read the entire instruction manual before operating shredders.
- Keep away from children and pets. Keep hands away from paper entry. Always set to off or unplug when not in use.
- Keep foreign objects – gloves, jewelry, clothing, hair, etc. – away from shredder openings. If object enters top opening, switch to Reverse (⏪) to back out object.
- Never use aerosol products, petroleum based lubricants or other flammable products on or near shredder. Do not use canned air on shredder.
- Do not use if damaged or defective. Do not disassemble shredder. Do not place near or over heat source or water.
- This shredder has an ON/OFF Switch (A) that must be in the ON (–) position to operate shredder. In case of emergency, move switch to OFF (○) position. This action will stop shredder immediately.
- Avoid touching exposed cutting blades under shredder head.
- Shredder must be plugged into a properly grounded wall outlet or socket of the voltage and amperage designated on the label. The grounded outlet or socket must be installed near the equipment and easily accessible. Energy converters, transformers, or extension cords should not be used with this product.
- FIRE HAZARD – Do NOT shred greeting cards with sound chips or batteries.
- For indoor use only.
- Unplug shredder before cleaning or servicing.

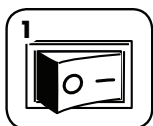
BASIC SHREDDING OPERATION



Continuous operation:
Up to 15-minutes maximum

NOTE: Shredder runs briefly after each pass to clear entry. Continuous operation beyond 15-minutes will trigger 25-minute cool down period.

PAPER OR CD/CARD



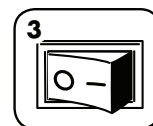
Plug in and put disconnect power switch in ON (–) position



Feed paper straight into paper entry and release



Hold CD/card at edge, feed into center of CD/card entry and release



When finished shredding set to OFF (○)

ADVANCED PRODUCT FEATURES



SafeSense® Technology
Stops shredding immediately when hands touch the paper opening.



SilentShred™ Technology
SilentShred™ noise quality shreds without noisy disruptions.



Sleep Mode
Energy saving feature shuts down the shredder after 2 minutes of inactivity.



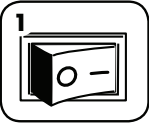
Auto Reverse
Stops and reverses paper if a jam occurs.



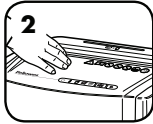
SAFESENSE® TECHNOLOGY OPERATION

Stops shredding immediately when hands touch the paper opening.

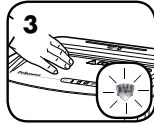
SET-UP AND TESTING



Turn the shredder ON (–) to activate SafeSense®



Touch test area and look for the SafeSense® indicator to illuminate



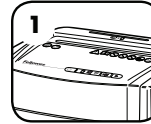
SafeSense® is active and working properly



SLEEP MODE OPERATION

Energy saving feature shuts down the shredder after 2 minutes of inactivity.

WHEN IN SLEEP MODE



In sleep mode



insert paper

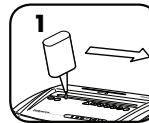
For more information about all of Fellowes Advanced Product Features go to www.fellowes.com

PRODUCT MAINTENANCE

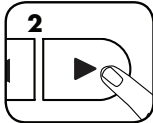
OILING SHREDDER

All micro-cut shredders require oil for peak performance. If not oiled, a machine may experience diminished sheet capacity, intrusive noise when shredding, and could ultimately stop running. To avoid these problems, we recommend you oil your shredder each time you empty your waste bin.


FOLLOW OILING PROCEDURE BELOW AND REPEAT TWICE



*Apply oil across entry



Press and hold forward (>) 2-3 seconds

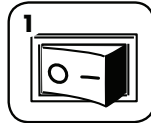
CAUTION *Only use a non-aerosol vegetable oil in long nozzle container such as Fellowes 35250 

CLEANING AUTO-START INFRARED SENSORS

Paper detection sensors are designed for maintenance free operation. However, on rare occasions the sensors may become blocked by paper dust causing the motor to run even if there is no paper present.

(Note: two paper detection sensors are located in the center of the paper entry).

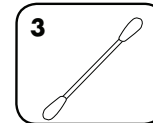
TO CLEAN THE SENSORS



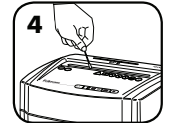
Turn OFF (O) and unplug shredder



Locate Auto-start infrared sensor



Dip cotton swab in rubbing alcohol



Using cotton swab, wipe away any contamination from the paper sensors

TROUBLESHOOTING



Overheat Indicator: When the Overheat Indicator is illuminated, the shredder has exceeded its maximum operating temperature and needs to cool down. This indicator will remain illuminated and the shredder will not operate for the duration of the recovery time. See Basic Shredding Operation for more information about the continuous operation and recovery time for this shredder.



Bin Full: When illuminated, the shredder waste bin is full and needs to be emptied. Use Fellowes waste bag 36052.



Remove Paper: When illuminated, press reverse (<<) and remove paper. Reduce paper quantity to an acceptable amount and refeed into paper entry.



SafeSense® Indicator: If hands are too close to the paper entry, the SafeSense® indicator will illuminate and the shredder will stop shredding.

LIMITED PRODUCT WARRANTY

Limited Warranty: Fellowes, Inc. ("Fellowes") warrants the parts of the machine to be free of defects in material and workmanship and provides service and support for 2 years from the date of purchase by the original consumer. Fellowes warrants the cutting blades of the machine to be free from defects in material and workmanship for 5 years from the date of purchase by the original consumer. If any part is found to be defective during the warranty period, your sole and exclusive remedy will be repair or replacement, at Fellowes' option and expense, of the defective part. This warranty does not apply in cases of abuse, mishandling, failure to comply with product usage standards, shredder operation using an improper power supply (other than listed on label), or unauthorized repair. Fellowes reserves the right to charge the consumers for any

additional costs incurred by Fellowes to provide parts or services outside of the country where the shredder is initially sold by an authorized reseller. ANY IMPLIED WARRANTY, INCLUDING THAT OF MERCHANTABILITY OR FITNESS FOR A PARTICULAR PURPOSE, IS HEREBY LIMITED IN DURATION TO THE APPROPRIATE WARRANTY PERIOD SET FORTH ABOVE. In no event shall Fellowes be liable for any consequential or incidental damages attributable to this product. This warranty gives you specific legal rights. The duration, terms, and conditions of this warranty are valid worldwide, except where different limitations, restrictions, or conditions may be required by local law. For more details or to obtain service under this warranty, please contact us or your dealer.

Australia Residents Only:

Our goods come with guarantees that cannot be excluded under the Australian Consumer Law. You are entitled to a replacement or refund for a major failure and for compensation for any other reasonably foreseeable loss or damage. You are also entitled to have the goods repaired or replaced if the goods fail to be of acceptable quality and the failure does not amount to a major failure. The benefits under Fellowes' Warranty are in addition to other rights and remedies under a law in relation to the shredder.



CUSTOMER SERVICE & SUPPORT

www.fellowes.com

Australia: +61-1-800-33-11-77

Europe: 00-800-1810-1810

United Kingdom: +44 (0) 1302 836836

United States: 001-800-514-9057

Declaration of Conformity

Fellowes Ltd.

Yorkshire Way, West Moor Park, Doncaster, South Yorkshire, DN3 3FB, England declares that the product Model 46Ms conforms with the requirements of the Restriction of Hazardous Substances Directive (2011/65/EC), the Low Voltage Directive (2014/35/EU), the Electromagnetic Compatibility Directive (2014/30/EU), the WEEE directive (2012/19/EU), and below harmonized European EN Standards:

Safety: EN 60950-1 (2nd Edition)

EMC Standard: EN55014-1 EN55014-2 EN61000-3-2 EN61000-3-3

Year Affixed: 15

Itasca, Illinois, USA
November 1, 2015

John Fellowes

W.E.E.E.

This product is classified as Electrical and Electronic Equipment. Should the time come for you to dispose of this product please ensure that you do so in accordance with the European Waste of Electrical and Electronic Equipment (WEEE) Directive and in compliance with local laws relating to this directive.

For more information on the WEEE Directive please visit www.fellowesinternational.com/WEEE



1789 Norwood Avenue, Itasca, Illinois 60143 • 1-800-955-0959 • www.fellowes.com