



POWERSHRED®
425Ci/425i/485Ci/485i
 THE WORLD'S **TOUGHEST** SHREDDERS™



POWERSHRED®
425Ci/425i/485Ci/485i
 THE WORLD'S **TOUGHEST** SHREDDERS™

Declaration of Conformity

Fellowes Manufacturing Company

Yorkshire Way, West Moor Park, Doncaster, South Yorkshire, DN3 3FB, England declares that the product Model 425Ci, 425i, 485Ci and 485i conforms with the requirements of the Restriction of Hazardous Substances Directive (2002/95/EC), the Low Voltage Directive (2006/95/EC) and the Electromagnetic Compatibility Directive (2004/108/EC) and the following harmonized European Names (EN Standards) and IEC Standards.

Safety: EN 60950-1(ed.2): A11

EMC Standard: EN 55014-1 EN 55014-2 EN 61000-3-2 EN 61000-3-3

Itasca, Illinois, USA
 December 1, 2010

James Fellowes
 James Fellowes



Questions or Concerns?

www.fellowes.com

- Troubleshooting
- Registration
- Manuals

Customer Service & Support

- Troubleshooting
- Replacement parts
- General questions

Australia	+1-800-33-11-77
Europe	00-800-1810-1810
United Kingdom	+44-(0)-1302-836836
United States	+1-800-955-0959

Fellowes 1789 Norwood Avenue, Itasca, Illinois 60143-1095 • USA • 630-893-1600

www.fellowes.com

©2011 Fellowes, Inc. Part No. 406026 Rev D

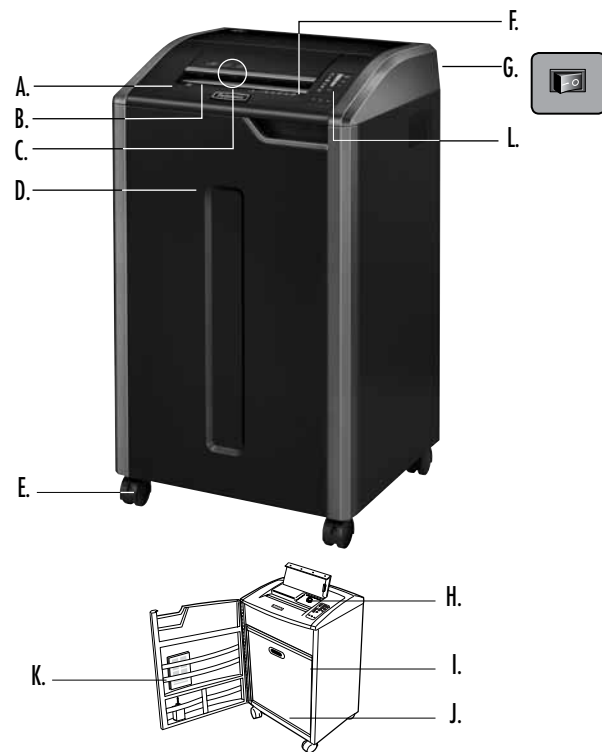
Please read these instructions before use.
 Do not discard: keep for future reference.

Fellowes

Quality Office Products Since 1917

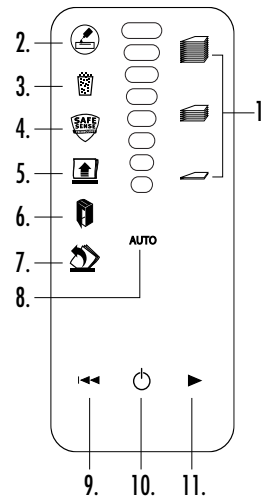
ENGLISH

Models 425Ci/425i/485Ci/485i



KEY

- | | |
|--|--|
| A. SafeSense® Technology | L. Control panel |
| B. Paper entry | 1. Sheet capacity indicator |
| C. CD, credit card and junk mail entry | 2. Low oil indicator (red)
425Ci and 485Ci only |
| D. Door | 3. Bin full (red) |
| E. Casters | 4. SafeSense® (yellow) |
| F. See safety instructions | 5. Remove paper (red) |
| G. Disconnect power switch | 6. Door open (red) |
| H. Oil reservoir | 7. Straight feed (red) |
| I. Oil drain plug (inside)
425Ci and 485Ci only | 8. Auto button |
| J. Basket | 9. Reverse |
| K. Accessory tray | 10. ON/OFF |
| | 11. Forward |



CAPABILITIES

Will shred: Paper, 132 column continuous form, credit cards, CD/DVDs, staples, paper clips and junk mail

Will not shred: Adhesive labels, transparencies, newspaper, cardboard, large paper clips, laminates, file folders, X-rays or plastic other than noted above

Paper shred size:

Cross-Cut (425Ci, 485Ci).....3.9mm x 30mm
Strip-Cut (425i, 485i).....5.8mm

Maximum:

Sheets per pass, 80g paper (Cross-cut).....28*
Sheets per pass, 70g paper (Cross-cut).....30*
Sheets per pass, 80g paper (Strip-cut).....38*
Sheets per pass, 70g paper (Strip-cut).....40*
CDs/Cards per pass1*
Paper entry width (485Ci, 485i)407mm
Paper entry width (425Ci, 425i)305mm

*A4, paper at 220-240V/50 Hz, 6Amps; heavier paper, humidity or other than rated voltage may reduce capacity. Recommended daily usage rates: 10,000 sheets per day, 500 credit cards; 50 CDs.

Fellowes SafeSense® shredders are designed to be operated in office environments ranging between 50 – 80 degrees Fahrenheit (10 – 26 degrees Celsius) and 40 – 80% relative humidity.

WARNING: IMPORTANT SAFETY INSTRUCTIONS — Read Before Using!



- Keep away from children and pets. Keep hands away from paper entry. Always set to off or unplug when not in use.
- Keep foreign objects – gloves, jewelry, clothing, hair, etc. – away from shredder openings. If object enters top opening, switch to Reverse (←) to back out object.
- Never use aerosol products, petroleum based lubricants or other flammable products on or near shredder. Do not use canned air on shredder.
- Do not use if damaged or defective. Do not disassemble shredder. Do not place near or over heat source or water.
- Operation, maintenance, and service requirements are covered in the instruction manual. Read the entire instruction manual before operating shredders.

- This shredder has a Disconnect Power Switch (G) that must be in the ON (I) position to operate shredder. In case of emergency, move switch to OFF (O) position. This action will stop shredder immediately.
- Avoid touching exposed cutting blades under shredder head.
- Use only designated entry for CDs/cards. Keep fingers away from CD entry.
- Do not put foreign objects in paper entry.
- Shredder must be plugged into a properly grounded wall outlet or socket of the voltage and amperage designated on the label. The grounded outlet or socket must be installed near the equipment and easily accessible. Energy converters, transformers, or extension cords should not be used with this product.
- FIRE HAZARD** – Do NOT shred greeting cards with sound chips or batteries.
- For indoor use only.
- Unplug shredder before cleaning or servicing.

Norwegian

Dette produktet klassifiseres som elektrisk og elektronisk utstyr. Hvis du har tenkt å bortskaffe dette produktet, vennligst se til at du gjør dette i overensstemmelse med det europeiske WEEE-direktivet (Waste of Electrical and Electronic Equipment) og ifølge lokalt lovverk forbundet med dette direktivet.

For mer informasjon om WEEE-direktivet, vennligst besøk www.fellowesinternational.com/WEEE

Polish

Ten produkt został zaklasyfikowany do grupy urządzeń elektrycznych i elektronicznych. W celu pozbycia się zużytego sprzętu będącego w Państwa posiadaniu należy postępować zgodnie z Europejską Dyrektywą w sprawie zużytego sprzętu elektrycznego i elektronicznego (WEEE) oraz z lokalnie obowiązującym prawem.

Więcej informacji znajdziecie Państwo na stronie www.fellowesinternational.com/WEEE

Russian

Данное изделие классифицировано как электрическое и электронное оборудование. Когда придет время утилизировать данное изделие, пожалуйста, обеспечьте соблюдение Директивы Евросоюза об утилизации отходов электрического и электронного оборудования (Waste of Electrical and Electronic Equipment, WEEE) и местных законов, связанных с ней.

Для получения дополнительной информации о директиве WEEE, пожалуйста, посетите веб-сайт www.fellowesinternational.com/WEEE

Greek

Αυτό το προϊόν είναι ταξινομημένο ως Ηλεκτρικός και Ηλεκτρονικός Εξοπλισμός. Σε περίπτωση που θέλετε να απορρίψετε αυτό το προϊόν, παρακαλείσθε να βεβαιωθείτε ότι κάνετε την απόρριψη σύμφωνα με την Ευρωπαϊκή Οδηγία σχετικά με τα Απόβλητα Ηλεκτρικού και Ηλεκτρονικού Εξοπλισμού (WEEE) και σύμφωνα με τους τοπικούς νόμους που σχετίζονται με αυτή την οδηγία.

Για περισσότερες πληροφορίες σχετικά με την Οδηγία WEEE, παρακαλείσθε να επισκεφτείτε την ιστοσελίδα www.fellowesinternational.com/WEEE

Turkish

Bu ürün, Elektriksel ve Elektronik Ekipman olarak sınıflandırılmıştır. Bu ürünü bertaraf etme zamanı geldiğinde, lütfen bunun Avrupa Elektriksel ve Elektronik Ekipmanların Atılması (WEEE) Yönetmeliği ve bu yönetmele ilgili yerel kanunlar uyarınca yapıldığından emin olun.

WEEE Yönetmeliği hakkında daha fazla bilgi için lütfen www.fellowesinternational.com/WEEE sitesini ziyaret edin

Czech

Tento výrobek je klasifikován jako elektrické a elektronické zařízení. Po skončení jeho životnosti zajistěte jeho likvidaci v souladu se Směrnicí 2002/96/ES o odpadu z elektrických a elektronických zařízení (OEEZ) a v souladu s místními předpisy, které s touto směrnicí souvisí.

Více informací o směrnici OEEZ najdete na stránkách www.fellowesinternational.com/WEEE

Slovak

Tento produkt je klasifikovaný ako elektrické a elektronické zariadenie. Ak nastane as zlikvidova tento produkt, zabezpe te, prosim, aby ste tak urobili v súlade s Európskou smernicou o odpade z elektrických a elektronických zariadeniach (WEEE) a v zhode s miestnymi zákonmi vz ahujúcimi sa na túto smernicu.

Podrobnejšie informácie o Smernici WEEE nájdete na www.fellowesinternational.com/WEEE

Hungarian

Ez a termék Elektromos és elektronikus berendezés besorolású. Ha eljönne az id, amikor ki kell dobni a terméket, akkor kérjük, gondoskodjon arról, hogy ezt az Európai elektromos és elektronikus berendezések hulladékáról szóló (WEEE) irányelv szerint tegye, megfelelve az irányelvhez kapcsolódó helyi törvényeknek is.

A WEEE Irányelvre vonatkozó további információkért kérjük, keresse fel a www.fellowesinternational.com/WEEE internetes címet

Portuguese

Este produto está classificado como Equipamento Eléctrico e Electrónico. Quando chegar a altura de eliminar este produto, certifique-se de que o faz em conformidade com a Directiva relativa a Resíduos de Equipamentos Eléctricos e Electrónicos (REEE) e em observância da legislação local relativa a esta directiva.

Para obter mais informações sobre a Directiva relativa a Resíduos de Equipamentos Eléctricos e Electrónicos (REEE), visite o endereço www.fellowesinternational.com/WEEE

W.E.E.E.

English

This product is classified as Electrical and Electronic Equipment. Should the time come for you to dispose of this product please ensure that you do so in accordance with the European Waste of Electrical and Electronic Equipment (WEEE) Directive and in compliance with local laws relating to this directive.

For more information on the WEEE Directive please visit www.fellowesinternational.com/WEEE

French

Ce produit est classé dans la catégorie « Équipement électrique et électronique ». Lorsque vous décidez de vous en débarrasser, assurez-vous d'être en parfaite conformité avec la directive européenne relative à la gestion des déchets d'équipements électriques et électroniques (DEEE), et avec les lois de votre pays liées à cette directive.

Pour obtenir des plus amples informations sur cette directive, rendez-vous sur www.fellowesinternational.com/WEEE

Spanish

Se clasifica este producto como Equipamiento Eléctrico y Electrónico. Si llegase el momento de deshacerse de este producto, asegúrese que lo hace cumpliendo la Directiva Europea sobre Residuos de Equipamiento Eléctrico y Electrónico (Waste of Electrical and Electronic Equipment, WEEE) y las leyes locales relacionadas con esta directiva.

Para más información acerca de la Directiva WEEE, visite www.fellowesinternational.com/WEEE

German

Dieses Produkt ist als Elektro- und Elektronikgerät klassifiziert. Wenn Sie dieses Gerät eines Tages entsorgen müssen, stellen Sie bitte sicher, dass Sie dies gemäß der Europäischen Richtlinie zu Sammlung und Recycling von Elektro- und Elektronikgeräten (WEEE) und in Übereinstimmung mit der lokalen Gesetzgebung in bezug auf diese Richtlinie tun.

Mehr Informationen zur WEEE-Richtlinie finden Sie unter: www.fellowesinternational.com/WEEE

Italian

Questo prodotto è classificato come Dispositivo Elettrico ed Elettronico. Al momento dello smaltimento di questo prodotto, effettuarlo in conformità alla Direttiva Europea sullo Smaltimento dei Dispositivi Elettrici ed Elettronici (WEEE) e alle leggi locali ad essa correlate.

Per ulteriori informazioni sulla Direttiva WEEE, consultare il sito www.fellowesinternational.com/WEEE

Dutch

Dit product is geclassificeerd als een elektrisch en elektronisch apparaat. Indien u besluit zich te ontdoen van dit product, zorg dan a.u.b. dat dit gebeurt in overeenstemming met de Europese richtlijn inzake afval van elektrische en elektronische apparaten (AEEA) en conform de lokale wetgeving met betrekking tot deze richtlijn.

Voor meer informatie over de AEEA-richtlijn kunt u terecht op www.fellowesinternational.com/WEEE

Swedish

Denna produkt är klassificerad som elektrisk och elektronisk utrustning. När det att dags att omhänderta produkten för avfallshantering se då till att detta utförs i enlighet med WEEE-direktivet om hantering av elektrisk och elektronisk utrustning och i enlighet med lokala bestämmelser relaterade till detta direktiv.

För mer information om WEEE-direktivet besök gärna www.fellowesinternational.com/WEEE

Danish

Denne produkt er klassificeret som elektrisk og elektronisk udstyr. Når tiden er inde til at bortskaffe dette produkt, bedes De sørge for at gøre dette i overensstemmelse med det Europæiske direktiv om affald af elektrisk og elektronisk udstyr (WEEE) og i henhold til de lokale love, der relaterer til dette direktiv.

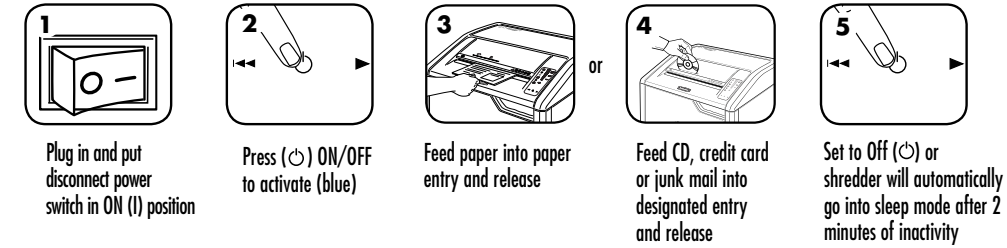
For yderligere oplysninger om WEEE-direktivet bedes De besøge www.fellowesinternational.com/WEEE

Finnish

Tämä tuote luokitellaan sähkö- ja elektroniikkalaitteeksi. Kun tuote poistetaan käytöstä, se on hävitettävä sähkö- ja elektroniikkalaiteromusta annetun EY:n direktiivin (WEEE) ja direktiiviin liittyvän kansallisen lainsäädännön mukaisesti.

Lisätietoja WEEE-direktiivistä on osoitteessa www.fellowesinternational.com/WEEE

BASIC SHREDDING OPERATION

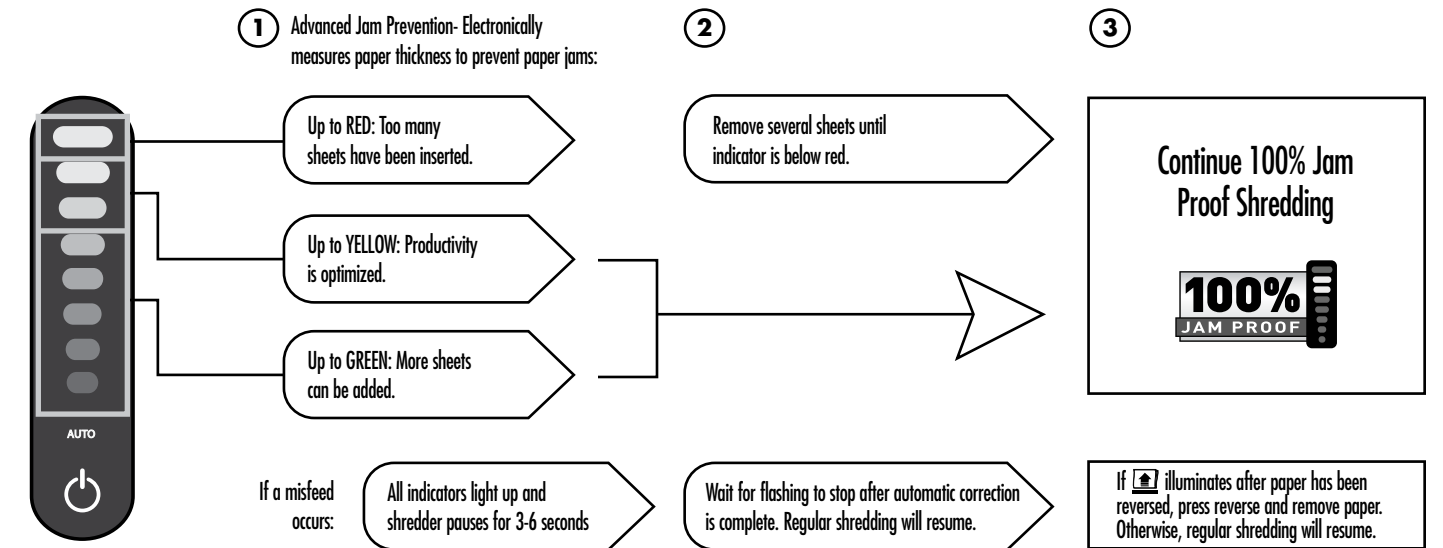


ADVANCED PRODUCT FEATURES

- 100% JAM PROOF** Jam Proof System Eliminates paper jams and powers through tough jobs.
- AUTO OIL** Auto Oil™ Lubricates the cutters automatically to enhance performance and extend shredder life.
- SAFE SENSE TECHNOLOGY** Patented SafeSense® Technology Automatically stops when hands touch the paper opening.
- ENERGY savings system** Energy Saving System Reduces energy consumption by up to 70%.*
*Compared to conventional shredders during normal usage.

100% JAM PROOF SYSTEM OPERATION*

Eliminates paper jams and powers through tough jobs.



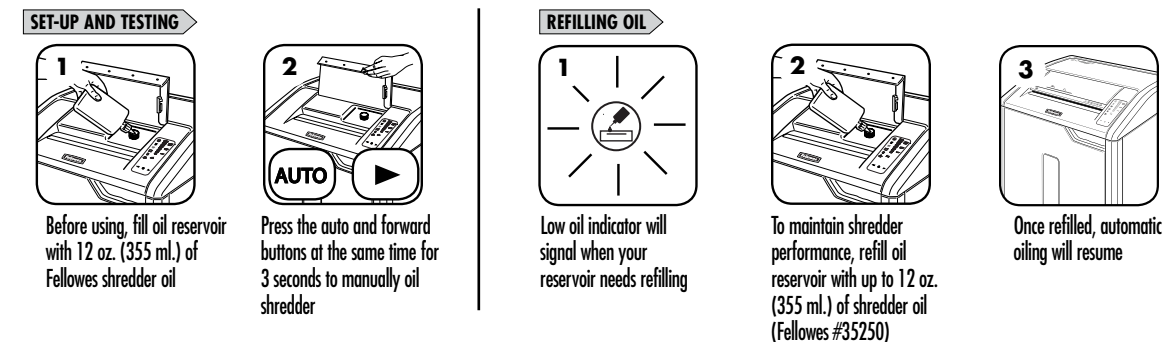
STRAIGHT FEED



*100% Jam Proof when used in accordance with user manual

AUTO OIL™ OPERATION

Lubricates the cutters automatically to enhance performance and extend shredder life (Auto oil system is only included on cross-cut models - 425Ci and 485Ci.)



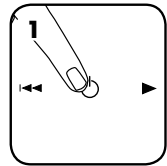
ADVANCED PRODUCT FEATURES



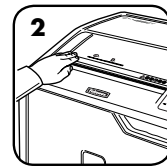
SAFESENSE® TECHNOLOGY OPERATION

Automatically stops when hands touch the paper opening.

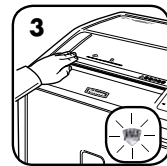
SET-UP AND TESTING



1 Turn the shredder on to activate SafeSense®



2 Touch test area and look for the SafeSense® indicator to illuminate



3 SafeSense® is active and working properly



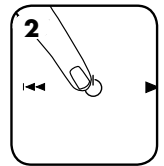
SLEEP MODE OPERATION

Energy saving feature shuts down the shredder after 2 minutes of inactivity

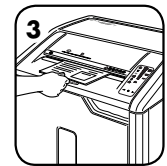
WHEN IN SLEEP MODE



1 In sleep mode



2 To get out of sleep mode or insert paper touch control panel



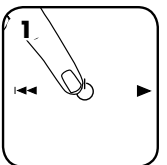
3 insert paper

PRODUCT MAINTENANCE

CLEANING AUTO-START INFRARED SENSORS

Paper detection sensors are designed for maintenance free operation. However, on rare occasions, the sensors may become blocked by paper dust causing the motor to run even if there is no paper present. (Note: two paper detection sensors are located in the center of the paper entry.)

TO CLEAN THE SENSORS



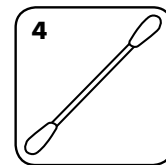
1 Turn off and unplug shredder



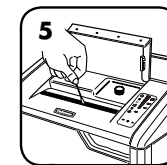
2 Lift CD flap



3 Locate Auto-start infrared sensor



4 Dip cotton swab in rubbing alcohol

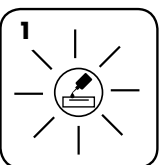


5 Using cotton swab, wipe away any contamination from the paper sensors

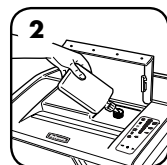
AUTO OIL™

Automatically oils the cutters to enhance performance and extend shredder life. (Auto oil system is only included on cross-cut models - 425Ci and 485Ci)

REFILLING THE OIL



1 Low oil indicator will signal when your reservoir needs refilling



2 To maintain shredder performance, refill oil reservoir with up to 12 oz. (355 ml.) of shredder oil (Fellowes 35250)



3 Once refilled, automatic oiling will resume

- All cross-cut shredders require oil for peak performance. If not oiled, a machine may experience diminished sheet capacity, intrusive noise when shredding and could ultimately stop running. We recommend that you refill the Auto Oil™ reservoir as instructed for optimum performance.
- If shipping shredder, oil must be drained. Open cabinet door and remove basket to access oil drain plug. Place suitable container under drain, remove plug and let oil drain out. Replace plug.

TROUBLESHOOTING



Low Oil Indicator: When illuminated, the shredder is out of oil and needs to be refilled. See the Product Maintenance section for refill instructions. For optimum performance, use Fellowes oil (35250). *Auto Oil™ is only featured on cross cut models – 425Ci and 485Ci.



Bin Full Indicator: When illuminated, the shredder waste bin is full and needs to be emptied. Use Fellowes waste bag 3605801.



SafeSense® Indicator: If hands are too close to the paper entry, the SafeSense® indicator will illuminate and the shredder will stop shredding. If SafeSense® is active for 3 seconds, the shredder will automatically turn off and the user must press the power button on the control panel to resume shredding.



Remove Paper Indicator: When illuminated, press reverse (←) and remove paper. Reduce paper quantity to an acceptable amount and refeed into paper entry.



Door Open Indicator: The shredder will not run if the cabinet door is open. When illuminated, close the door to resume shredding.



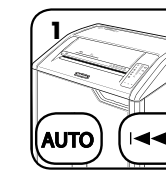
Straight Feed Indicator: When illuminated, remove paper and feed straight into paper entry.



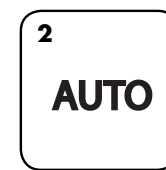
JAM PROOF SYSTEM*

Eliminates paper jams and powers through tough jobs.

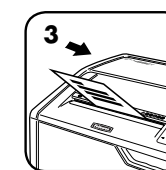
DISABLING THE FEATURE



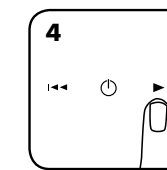
1 Should you choose to disable the system, press and hold the auto and reverse (←) buttons at the same time



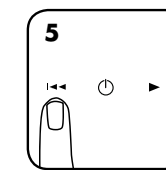
2 Once disabled, the blue Auto light is no longer illuminated (To re-engage, repeat step 1)



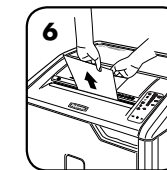
3 Shredding can continue with the system disabled; however, a paper jam may occur with too many sheets and Remove Paper icon (⬇) will illuminate



4 If jam occurs, press and hold forward (▶) button until the document is completely through the shredder



5 If not cleared, press reverse (←) briefly (repeat steps 4 and 5 until shredded)



6 If steps 4 and 5 do not clear jam, reverse paper all the way out, remove several sheets and refeed

*100% Jam Proof when used in accordance with user manual

LIMITED PRODUCT WARRANTY

Limited Warranty: Fellowes, Inc. ("Fellowes") warrants the parts of the machine to be free of defects in material and workmanship and provides service and support for 2 years from the date of purchase by the original consumer. Fellowes warrants the cutting blades of the machine to be free from defects in material and workmanship for 20 years from the date of purchase by the original consumer. If any part is found to be defective during the warranty period, your sole and exclusive remedy will be repair or replacement, at Fellowes' option and expense, of the defective part. This warranty does not apply in cases of abuse, mishandling, failure to comply with product usage standards, shredder operation using an improper power supply (other than listed on the label), or unauthorized repair. Fellowes reserves the right to charge the consumers for any additional costs incurred by Fellowes to provide

parts or services outside of the country where the shredder is initially sold by an authorized reseller. ANY IMPLIED WARRANTY, INCLUDING THAT OF MERCHANTABILITY OR FITNESS FOR A PARTICULAR PURPOSE, IS HEREBY LIMITED IN DURATION TO THE APPROPRIATE WARRANTY PERIOD SET FORTH ABOVE. In no event shall Fellowes be liable for any consequential or incidental damages attributable to this product. This warranty gives you specific legal rights. The duration, terms, and conditions of this warranty are valid worldwide, except where different limitations, restrictions, or conditions may be required by local law. For more details or to obtain service under this warranty, please contact us or your dealer.