

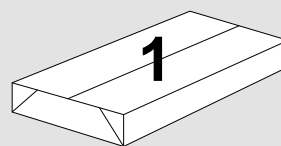
Crew - Workstation

CT20L-WS1-O & CTP-20L-WS1-O

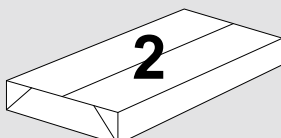


ASSEMBLY INSTRUCTIONS

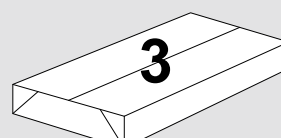
Crew
Workstation - With Toolbar



Pack 1:
1x Top Pack

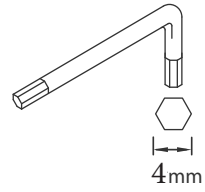
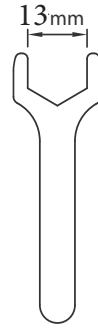
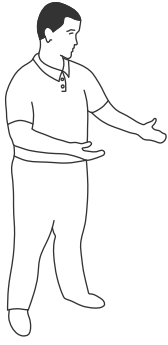


Pack 2:
1x Frame Pack

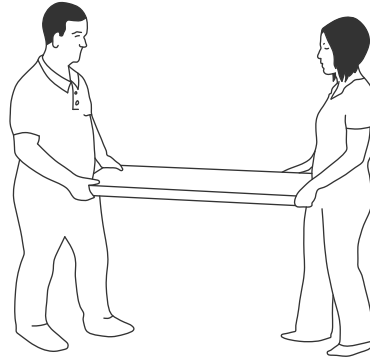
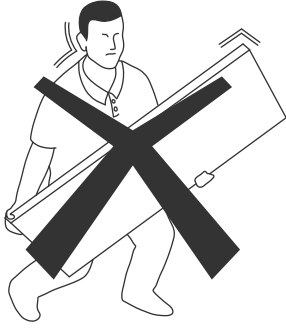


Pack 3:
1x Fitting Kit

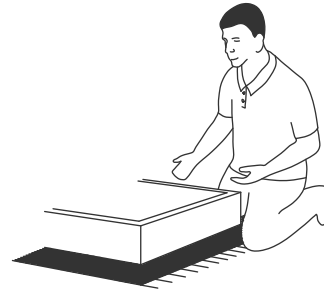
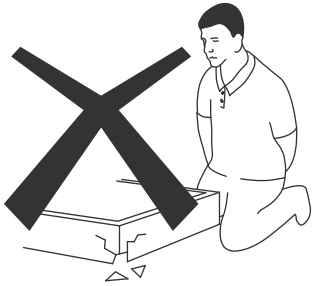
TOOLS REQUIRED
FOR ASSEMBLY



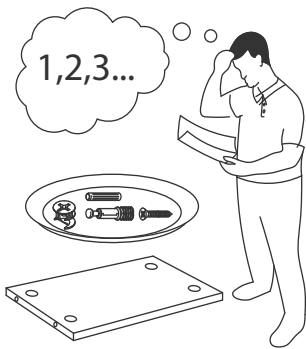
DONT STRUGGLE
2 MAN LIFT



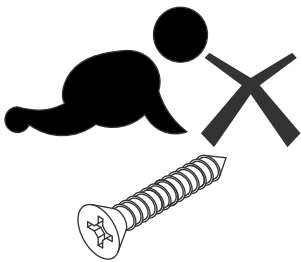
ALWAYS HANDLE
ITEMS WITH CARE



IF UNSURE CALL
FOR ASSISTANCE

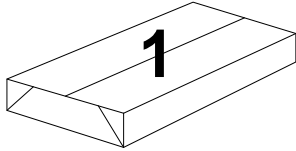


KEEP FITTINGS AWAY
FROM CHILDREN

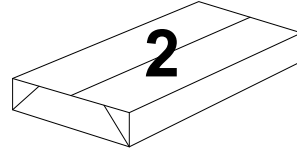
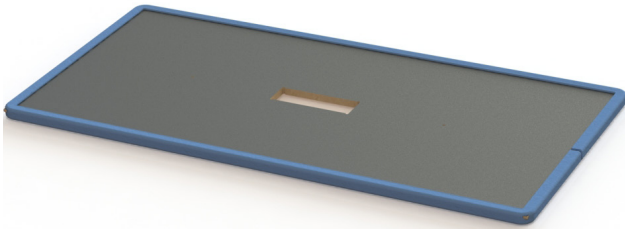




Please check that you have all the panels

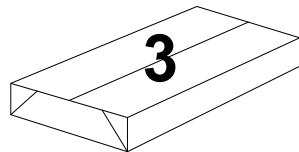


PACK 1:
1 x Top Pack
DT2010-WS



PACK 2:
1 x Frame Pack

Dining = CT20
Posuer = CTP20



PACK 3:
1 x Fitting Kit
CT-KIT



Please check that you have all the fittings

FITTINGS SUPPLIED



Connector Bolt - M6

Size
75mm

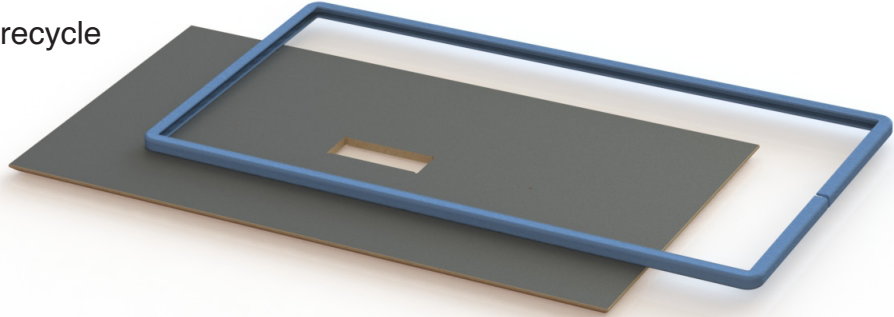
PCS
8

CREW WORKSTATION ASSEMBLY

1

Step 1

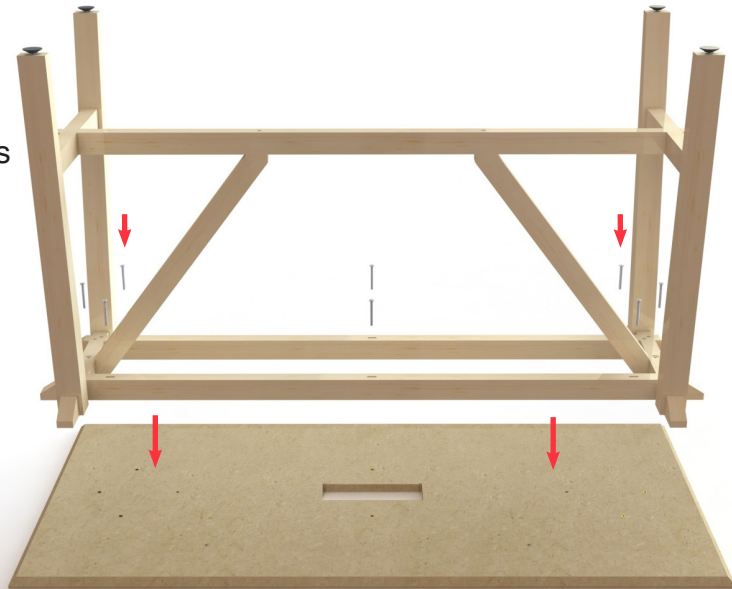
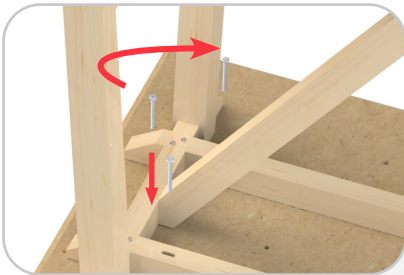
Unpack your new Crew Workstation and please recycle all packaging.



2

Step 2

Align the fixing holes in the rails to the holes in the underside of the top panel.



3

Step 3

Locate the tool bar to the top panel and affix using the M6 bolts as shown.

