

0402006

Fanta Orange 330ML X24

Fanta Orange 24x0.35kg

PRODUCT DESCRIPTION

Fanta Orange Can 330ML X24

Brand	Coca-Cola
Manufacturer Product	462622
Code	
Product Type	Drink
Product Category	Drinks - General
Storage Type	Ambient
Erudus ID	9f03925e44db4b71ad7522aef101f4f6
Specification Type	Legacy



Inner Component GTIN	5449000011527
Outer Case GTIN	5017726180416



INGREDIENTS

Ingredient Declaration

Carbonated Water, Sugar, Orange Juice From Concentrate (3.7%), Citrus Fruit From Concentrate (1.3%), Acids (Citric Acid, Malic Acid), Vegetable Extracts (Carrot, Pumpkin), Sweeteners (Acesulfame K, Sucralose), Preservative (Potassium Sorbate), Acidity Regulator (Sodium Citrates), Stabiliser (Guar Gum), Natural Orange Flavourings With Other Natural Flavourings, Antioxidant (Ascorbic Acid).

ALLERGENS

Product Contains:

Celery/Celeriac	No	Mustard	No
Cereals Containing Gluten	No	Nuts (Tree)	No
Barley	No	Almond nuts	No
Oats	No	Brazil nuts	No
Rye	No	Cashew nuts	No
Wheat (including Spelt and Khorasan)	No	Hazelnuts	No
Crustacea	No	Macadamia (Queensland) nuts	No
Eggs	No	Pecan nuts	No
Fish	No	Pistachio nuts	No
Lupin	No	Walnuts	No
Milk	No	Peanuts	No
Molluscs	No	Sesame Seeds	No
		Soybeans	No
		Sulphur Dioxide and Sulphites	No

SUPPLEMENTARY
INGREDIENT
INFORMATION

Palm Oil	No
Hydrogenated Vegetable Oil/Fat	No
GM Protein/DNA	No

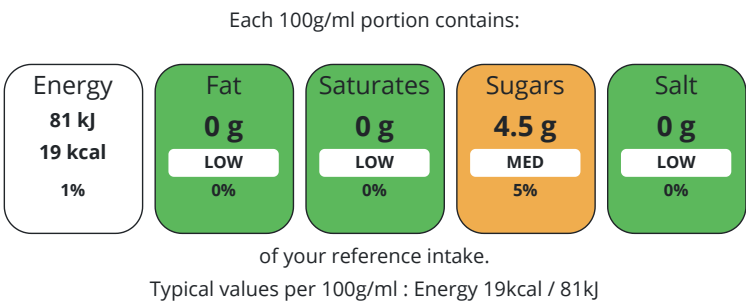
ADDITIVES

Product Contains:			
Artificial Antioxidants	Yes	Artificial Flavourings	Yes
Artificial Colours	No	Artificial Preservatives	Yes
Artificial Flavour Enhancers	No	Artificial Sweeteners	Yes

DIET SUITABILITY

Suitable for Coeliacs	Yes	Halal Diet	Suitable for
Kosher Diet	Suitable for	Vegetarian Diet	Suitable for
Vegan Diet	Suitable for		

NUTRITIONAL
INFORMATION



Nutrient	per 100g/ml	RI per 100g/ml
Energy (kj)	81 kj	1%
Energy (kcal)	19 kcal	1%
Fat	0 g	
of which Saturates	0 g	
Carbohydrate	4.5 g	2%
of which Sugars	4.5 g	5%
Protein	0 g	
Salt	0 g	

SUPPLEMENTARY
NUTRITIONAL
INFORMATION

HFSS Status	No
-------------	----

HFSS (HIGH IN
FAT, SALT AND
SUGAR)
HANDLING &
STORAGE
INFORMATION

Directions For Use

Best served chilled.

Storage Instructions

Store in a cool dry place.

Shelf Life from Time of Production	360 Days
------------------------------------	----------

ORIGIN

Product Country of Origin	Great Britain
---------------------------	---------------

PRODUCT
CHARACTERISTICS
CONFIGURATION

Standards Testing	
Case Configuration	Inner Pack Configuration
Total Quantity of Inner Components in Outer Case	24 Units
Is the Outer Case Splittable?	No

PRODUCT WEIGHTS	Inner Component					
	Variable Weight Consumer Item		No			
	Inner Component Weight		0.35 kg			
	Outer Case					
	Outer Case Gross Weight		8.41 kg			
	Outer Case Net Weight		8.05 kg			
	Inner Component					
	PRODUCT DIMENSIONS	Inner Component Depth		66 mm		
Inner Component Width		66 mm				
Inner Component Height		116 mm				
Outer Case						
	Outer Case Depth		404 mm			
	Outer Case Width		271 mm			
	Outer Case Height		118 mm			
	PALLET INFORMATION	Quantity of Cases Per Pallet Layer		10 Cases	Pallet Height	
Quantity of Layers Per Pallet		12 Layers	Pallet Gross Weight		1042.62 kg	
Quantity of Cases Per Pallet		120 Cases				
PACKAGING		Inner Component Packaging				
	Type	Materials	Weight	Recycled Plastic %	Recyclable	Returnable Composite
	Can	Aluminium	295.2 g	- %		
	Outer Case Packaging					
	Type	Materials	Weight	Recycled Plastic %	Recyclable	Returnable Composite
	Case	Plastic	16.65 g	- %		
	Case	Paper/Cardboard	59.63 g	- %		
	OTHER INFORMATION CONTACT INFORMATION	Address			Technical Contact	
Coca-Cola			Data Queries			
Coca-Cola Europacific Partners Great Britain Limited			npidataexchange@ccep.com			
Pemberton House, Bakers Road						
	Uxbridge					
	UB8 1EZ					
	United Kingdom					
	P: (Phone) 08081000000					

The information on the [Erudus System](#) has been supplied by the manufacturers of the products and, whilst the owners of the Erudus System take steps to ensure the information is regularly updated, they give no warranty and no guarantee that the information is accurate. Product information and ingredients may change, please always read product labels carefully in addition to using the information provided by Erudus.

We do not accept liability for any inaccuracies or incorrect information contained on this site.
Please visit <http://www.erudus.com/terms-and-conditions> for full terms and conditions.