

Diet Coke 330ml x24

Diet Coke 24x0.34kg

PRODUCT DESCRIPTION

Diet Coke 330ml x24 Can

Brand	Coca-Cola
Manufacturer Product Code	407500
Product Type	Drink
Product Category	Drinks - General
Storage Type	Ambient
Erudus ID	7c83bcf316ff470fa778d27972768d0f
Specification Type	Drinks



Inner Component GTIN	5449000053879
Outer Case GTIN	5017726180621



INGREDIENTS

Ingredient Declaration
Carbonated Water, Colour (Caramel E150d), Sweeteners (Aspartame, Acesulfame K), Natural Flavourings, Caffeine Flavouring, Acids (Phosphoric Acid, Citric Acid).

ALLERGENS

Product Contains:

Celery/Celeriac	No
Cereals Containing Gluten	No
Barley	No
Oats	No
Rye	No
Wheat (including Spelt and Khorasan)	No
Crustacea	No
Eggs	No
Fish	No
Lupin	No
Milk	No
Molluscs	No

Mustard	No
Nuts (Tree)	No
Almond nuts	No
Brazil nuts	No
Cashew nuts	No
Hazelnuts	No
Macadamia (Queensland) nuts	No
Pecan nuts	No
Pistachio nuts	No
Walnuts	No
Peanuts	No
Sesame Seeds	No
Soybeans	No
Sulphur Dioxide and Sulphites	No

SUPPLEMENTARY INGREDIENT INFORMATION	Palm Oil	No
	Hydrogenated Vegetable Oil/Fat	No
	GM Protein/DNA	No

ADDITIVES

Product Contains:

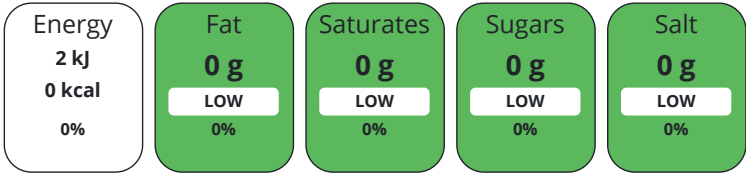
Artificial Antioxidants	No	Artificial Flavourings	No
Artificial Colours	Yes	Artificial Preservatives	No
Artificial Flavour Enhancers	No	Artificial Sweeteners	Yes

DIET SUITABILITY

Vegan Diet	Suitable for	Vegetarian Diet	Suitable for
Halal Diet	Suitable for	Kosher Diet	Suitable for

NUTRITIONAL
INFORMATION AS
SOLD

Each 100g/ml portion contains:



of your reference intake.
Typical values per 100g/ml : Energy 0kcal / 2kJ

Nutrient	per 100ml	RI per 100ml
Energy (kJ)	1.6 kJ	0%
Energy (kcal)	0.4 kcal	0%
Fat	0 g	
of which Saturates	0 g	
Carbohydrate	0 g	
of which Sugars	0 g	
Protein	0 g	
Salt	0 g	

SUPPLEMENTARY
NUTRITIONAL
INFORMATION

HFSS (HIGH IN
FAT, SALT AND
SUGAR)
HANDLING &
STORAGE
INFORMATION

HFSS Status	No
Directions For Use	Best served chilled.
Storage Instructions	Store in a cool dry place.
Shelf Life from Time of Production	180 Days

ORIGIN

Product Country of Origin	Great Britain
Origin of the Primary Ingredient	

PRODUCT
CHARACTERISTICS
CONFIGURATION

Standards Testing	
Case Configuration	Inner Pack Configuration
Total Quantity of Inner Components in Outer Case	24 Units
Is the Outer Case Splittable?	No

PRODUCT WEIGHTS	Inner Component						
	Inner Component Weight	0.34 kg					
	Outer Case						
	Outer Case Gross Weight	8.27 kg					
PRODUCT DIMENSIONS	Outer Case Net Weight		7.9 kg				
	Inner Component						
	Inner Component Depth	67 mm					
	Inner Component Width	67 mm					
PALLET INFORMATION	Inner Component Height		116 mm				
	Outer Case						
	Outer Case Depth	404 mm					
	Outer Case Width	271 mm					
PACKAGING	Outer Case Height		118 mm				
	Quantity of Cases Per Pallet Layer	10 Cases	Pallet Type		UK Standard Pallet		
	Quantity of Layers Per Pallet	12 Layers	Pallet Height		1.58 MTR		
	Quantity of Cases Per Pallet	120 Cases	Pallet Gross Weight		1022.21 kg		
SAFETY & WARNINGS	Inner Component Packaging						
	Type	Materials	Weight	Recycled Plastic %	Recyclable	Returnable	Composite
	Can	Aluminium	295.2 g	- %			
	Outer Case Packaging						
OTHER INFORMATION	Type	Materials	Weight	Recycled Plastic %	Recyclable	Returnable	Composite
	Case	Plastic	16.65 g	- %			
	Case	Paper/Cardboard	59.63 g	- %			
CONTACT INFORMATION	Address			Technical Contact			
	Coca-Cola			Data Queries			
	Coca-Cola Europacific Partners Great Britain Limited			npidataexchange@ccep.com			
	Pemberton House, Bakers Road						
CONTACT INFORMATION	Uxbridge						
	UB8 1EZ						
	United Kingdom						
	P: (Phone) 08081000000						

The information on the [Erudus System](#) has been supplied by the manufacturers of the products and, whilst the owners of the Erudus System take steps to ensure the information is regularly updated, they give no warranty and no guarantee that the information is accurate. Product information and ingredients may change, please always read product labels carefully in addition to using the information provided by Erudus.

We do not accept liability for any inaccuracies or incorrect information contained on this site.
Please visit <http://www.erudus.com/terms-and-conditions> for full terms and conditions.