

0402003

# Coca-Cola Zero Sugar 330ml x24

Coca-cola Zero Sugar 24x0.34kg

## PRODUCT DESCRIPTION

Coca-Cola Zero Sugar 330ml x24 Can

Brand	Coca-Cola
Manufacturer Product	408614
Code	
Product Type	Drink
Product Category	Drinks - General
Storage Type	Ambient
Erudus ID	eed307b69c6a401f9a226a4eb2e9fb91
Specification Type	Legacy



Inner Component GTIN	5449000131805
Outer Case GTIN	5017726175665



## INGREDIENTS

**Ingredient Declaration**  
Carbonated Water, Colour (Caramel E150d), Acid (Phosphoric Acid), Sweeteners (Aspartame, Acesulfame K), Natural Flavourings, Caffeine Flavouring, Acidity Regulator (Sodium Citrates). Contains a Source of Phenylalanine.

## ALLERGENS

Product Contains:

Celery/Celeriac	No	Mustard	No
Cereals Containing Gluten	No	Nuts (Tree)	No
Barley	No	Almond nuts	No
Oats	No	Brazil nuts	No
Rye	No	Cashew nuts	No
Wheat (including Spelt and Khorasan)	No	Hazelnuts	No
Gluten content <20ppm	Yes	Macadamia (Queensland) nuts	No
Crustacea	No	Pecan nuts	No
Eggs	No	Pistachio nuts	No
Fish	No	Walnuts	No
Lupin	No	Peanuts	No
Milk	No	Sesame Seeds	No
Molluscs	No	Soybeans	No
		Sulphur Dioxide and Sulphites	No

## SUPPLEMENTARY INGREDIENT INFORMATION

<b>Palm Oil</b>	No
<b>Hydrogenated Vegetable Oil/Fat</b>	No
<b>GM Protein/DNA</b>	No

ADDITIVES

Product Contains:

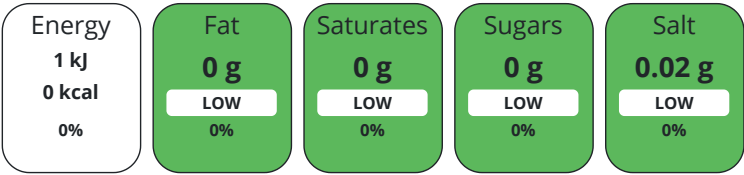
Artificial Antioxidants	No	Artificial Flavourings	No
Artificial Colours	Yes	Artificial Preservatives	Yes
Artificial Flavour Enhancers	No	Artificial Sweeteners	Yes

DIET SUITABILITY

Suitable for Coeliacs	Yes	Halal Diet	Suitable for
Kosher Diet	Suitable for	Vegetarian Diet	Suitable for
Vegan Diet	Suitable for		

NUTRITIONAL INFORMATION

Each 100g/ml portion contains:



of your reference intake.

Typical values per 100g/ml : Energy 0kcal / 1kJ

Nutrient	per 100g/ml	RI per 100g/ml
Energy (kJ)	1.4 kJ	0%
Energy (kcal)	0.3 kcal	0%
Fat	0 g	
of which Saturates	0 g	
Carbohydrate	0 g	
of which Sugars	0 g	
Protein	0 g	
Salt	0.02 g	0%

SUPPLEMENTARY NUTRITIONAL INFORMATION

HFSS (HIGH IN FAT, SALT AND SUGAR)  
HANDLING & STORAGE INFORMATION

HFSS Status	No
Directions For Use	Best served chilled.
Storage Instructions	Store in a cool dry place.
Shelf Life from Time of Production	180 Days

ORIGIN

Product Country of Origin	Great Britain
---------------------------	---------------

PRODUCT CHARACTERISTICS CONFIGURATION

Standards Testing	
Case Configuration	Inner Pack Configuration
Total Quantity of Inner Components in Outer Case	24 Units
Is the Outer Case Splittable?	No

PRODUCT WEIGHTS	Inner Component						
	Variable Weight Consumer Item		No				
	Inner Component Weight		0.34 kg				
	Outer Case						
	Outer Case Gross Weight		8.27 kg				
	Outer Case Net Weight		7.9 kg				
	Inner Component						
	PRODUCT DIMENSIONS	Inner Component Depth		66 mm			
Inner Component Width		116 mm					
Inner Component Height		66 mm					
Outer Case							
	Outer Case Depth		404 mm				
	Outer Case Width		271 mm				
	Outer Case Height		118 mm				
	PALLET INFORMATION	Quantity of Cases Per Pallet Layer		10 Cases		Pallet Height	
Quantity of Layers Per Pallet		12 Layers		Pallet Gross Weight		1022.31 kg	
Quantity of Cases Per Pallet		120 Cases					
PACKAGING		Inner Component Packaging					
	Type	Materials	Weight	Recycled Plastic %	Recyclable	Returnable	Composite
	Can	Aluminium	9.8 g	- %			
	Outer Case Packaging						
	Type	Materials	Weight	Recycled Plastic %	Recyclable	Returnable	Composite
	Case	Plastic	16.65 g	- %			
	Case	Paper/Cardboard	58.35 g	- %			
	OTHER INFORMATION CONTACT INFORMATION	Address			Technical Contact		
Coca-Cola			Data Queries				
Coca-Cola Europacific Partners Great Britain Limited			npidataexchange@ccep.com				
Pemberton House, Bakers Road							
	Uxbridge						
	UB8 1EZ						
	United Kingdom						
	P: (Phone) 08081000000						

The information on the [Erudus System](#) has been supplied by the manufacturers of the products and, whilst the owners of the Erudus System take steps to ensure the information is regularly updated, they give no warranty and no guarantee that the information is accurate. Product information and ingredients may change, please always read product labels carefully in addition to using the information provided by Erudus.

We do not accept liability for any inaccuracies or incorrect information contained on this site.  
Please visit <http://www.erudus.com/terms-and-conditions> for full terms and conditions.