

# Coca-Cola Original Taste 330ml x24

Coca-cola Original Taste 24x0.36kg

PRODUCT DESCRIPTION

Coca-Cola Original Taste 330ml x24 Can

Brand	Coca-Cola
Manufacturer Product Code	407477
Product Type	Drink
Product Category	Drinks - General
Storage Type	Ambient
Erudus ID	5bf60cc1f61c4ba2a46c8ecbf18e7eca
Specification Type	Legacy
Inner Component GTIN	05449000000996
Outer Case GTIN	05017726180034



INGREDIENTS

**Ingredient Declaration**  
Carbonated Water, Sugar, Colour (Caramel E150d), Acid (Phosphoric Acid), Natural Flavourings, Caffeine Flavouring.

ALLERGENS

Product Contains:

Celery/Celeriac	No
Cereals Containing Gluten	No
Barley	No
Oats	No
Rye	No
Wheat (including Spelt and Khorasan)	No
Crustacea	No
Eggs	No
Fish	No
Lupin	No
Milk	No
Molluscs	No

Mustard	No
Nuts (Tree)	No
Almond nuts	No
Brazil nuts	No
Cashew nuts	No
Hazelnuts	No
Macadamia (Queensland) nuts	No
Pecan nuts	No
Pistachio nuts	No
Walnuts	No
Peanuts	No
Sesame Seeds	No
Soybeans	No
Sulphur Dioxide and Sulphites	No

SUPPLEMENTARY  
INGREDIENT  
INFORMATION

Palm Oil	No
Hydrogenated Vegetable Oil/Fat	No
GM Protein/DNA	No

ADDITIVES

Product Contains:

Artificial Antioxidants	No
Artificial Colours	Yes
Artificial Flavour Enhancers	No

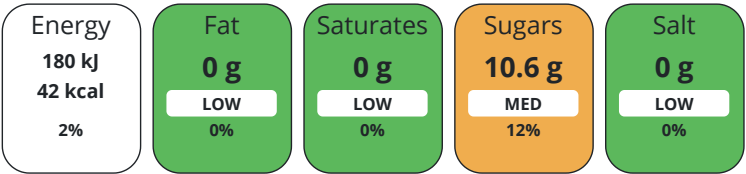
Artificial Flavourings	Yes
Artificial Preservatives	No
Artificial Sweeteners	No

DIET SUITABILITY

Suitable for Coeliacs	Yes	Halal Diet	Suitable for
Kosher Diet	Suitable for	Vegetarian Diet	Suitable for
Vegan Diet	Suitable for		

NUTRITIONAL INFORMATION

Each 100g/ml portion contains:



of your reference intake.  
Typical values per 100g/ml : Energy 42kcal / 180kJ

Nutrient	per 100g/ml	RI per 100g/ml
Energy (kJ)	180 kJ	2%
Energy (kcal)	42 kcal	2%
Fat	0 g	
of which Saturates	0 g	
Carbohydrate	10.6 g	4%
of which Sugars	10.6 g	12%
Protein	0 g	
Salt	0 g	

SUPPLEMENTARY NUTRITIONAL INFORMATION

HFSS (HIGH IN FAT, SALT AND SUGAR)  
HANDLING & STORAGE INFORMATION

HFSS Status	No
Directions For Use	Best served chilled.
Storage Instructions	Store cool and dry
Shelf Life from Time of Production	360 Days

ORIGIN

Product Country of Origin	Great Britain
---------------------------	---------------

PRODUCT CHARACTERISTICS CONFIGURATION

Standards Testing	
Case Configuration	Inner Pack Configuration
Total Quantity of Inner Components in Outer Case	24 Units
Is the Outer Case Splittable?	No

PRODUCT WEIGHTS

Inner Component	
Variable Weight Consumer Item	No
Inner Component Weight	0.36 kg
Outer Case	
Outer Case Gross Weight	8.59 kg
Outer Case Net Weight	8.23 kg

PRODUCT  
DIMENSIONS

Inner Component	
Inner Component Depth	67 mm
Inner Component Width	67 mm
Inner Component Height	116 mm
Outer Case	
Outer Case Depth	404 mm
Outer Case Width	271 mm
Outer Case Height	118 mm

PALLET  
INFORMATION

Quantity of Cases Per Pallet Layer	10 Cases	Pallet Height	1.58 MTR
Quantity of Layers Per Pallet	12 Layers	Pallet Gross Weight	1060.89 kg
Quantity of Cases Per Pallet	120 Cases		

PACKAGING

Inner Component Packaging						
Type	Materials	Weight	Recycled Plastic %	Recyclable	Returnable	Composite
Can	Aluminium	285.36 g	- %			
Outer Case Packaging						
Type	Materials	Weight	Recycled Plastic %	Recyclable	Returnable	Composite
Case	Plastic	16.96 g	- %			
Case	Paper/Cardboard	51.2 g	- %			

OTHER  
INFORMATION  
CONTACT  
INFORMATION

Address	Technical Contact
Coca-Cola	Data Queries
Coca-Cola Europacific Partners Great Britain Limited	npidataexchange@ccep.com
Pemberton House, Bakers Road	
Uxbridge	
UB8 1EZ	
United Kingdom	
P: (Phone) 08081000000	

The information on the [Erudus System](#) has been supplied by the manufacturers of the products and, whilst the owners of the Erudus System take steps to ensure the information is regularly updated, they give no warranty and no guarantee that the information is accurate. Product information and ingredients may change, please always read product labels carefully in addition to using the information provided by Erudus.

We do not accept liability for any inaccuracies or incorrect information contained on this site.  
Please visit <http://www.erudus.com/terms-and-conditions> for full terms and conditions.