

PRODUCT SHORT DESCRIPTION:

ECO FRIENDLY TRIPOD EASEL MADE FROM RECYCLED MATERIALS

FEATURES AND BENEFITS:

- Contains over 45% post consumer and post industrial waste material
- All the convenience of the standard easel combined with eco-responsibility
- Best performance dryerase surface ideal for normal use
- Durable and Lightweight
- Adjustable Height
- Available in A1 and Euro size variations
- 100% aluminium post-consumer and post-industrial waste material

PRODUCT IMAGE:



MARKETING COPY:

Adding portability to efficiency we came up with state of the art easels for professional presentations. From the most sophisticated to the simplest solutions, Bi-Office quality guarantees convenience and versatility in all its transportable presentation boards. Dynamic enterprises can boost efficiency and manage space according to the needs of the moment. Our ceramic steel surfaces are both lightweight and extremely resilient, producing hardly any ghosting and being very easy to clean. The possibility to use our magnetic accessories and flipchart pads assures excellent results in combining different methods to make communication more efficient.

APPLICATION AND SALES PROPOSITION:

TARGET MARKET:

CHANNEL: Office products wholesalers, office products stores, decoration products wholesalers, decoration stores and other retailers
 END USERS: conference centers, hotels, companies and organizations in general

ADDITIONAL NOTES:

Other information supports: our official websites, Youtube®, Facebook®, catalogue and online catalogue, demo videos and more.

PROMOTIONAL TIPS:

No specific timing, thus we recommend the occasional promotion like product and offering of cleaning kits or markers

RANGING TABLE:

Frame/Colour:	Surface/Colour:	Product Size:	Packed mm	N.W. kg	G.W. kg	Reference:	RRP:
Plastic grey	White non-magnetic	600x850 (A1)	1100x755x95	7,00	9,5	EA4676995	---
Plastic grey	White magnetic	600x850 (A1)	1100x755x95	7,00	9,5	EA4606995	---
Plastic grey	White non-magnetic w/ arms	600x850 (A1)	1215x880x95	7,50	10,0	EA4676996	---
Plastic grey	White magnetic w/ arms	600x850 (A1)	1215x880x95	7,50	10,0	EA4606996	---
Plastic grey	White non-magnetic	700x1000 (Euro)	1100x755x95	7,20	9,70	EA2376995	---
Plastic grey	White magnetic	700x1000 (Euro)	1100x755x95	7,20	9,70	EA2306995	---

RANGING TABLE:

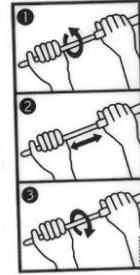
Frame/Colour:	Surface/Colour:	Product Size:	Packed mm	N.W. kg	G.W. kg	Reference:	RRP:
Plastic grey	White non-magnetic w/ arms	700x1000 (Euro)	1100x755x95	7,70	10,20	EA2376996	---
Plastic grey	White magnetic w/ arms	700x1000 (Euro)	1100x755x95	7,70	10,20	EA2306995	---

TECHNICAL DETAILS

COMPOSITION:

- Plastic frame
- Wooden based core with magnetic steel or white melamine surface
- Pen tray
- 2 year warranty

ASSEMBLY OVERVIEW:



CERTIFICATION AND LEGISLATION:

n/a

ILLUSTRATION:

n/a

SUGGESTED ADVERT:

Earth-It Tripod Easel

ECO FRIENDLY TRIPOD EASEL MADE FROM RECYCLED MATERIALS

- Contains over 45% post consumer and post industrial waste material
- All the convenience of the standard easel combined with eco-responsibility
- Best performance dryerase surface ideal for normal use
- Durable and Lightweight
- Adjustable Height
- Available in A1 and Euro size variations
- 100% aluminium post-consumer and post-industrial waste material



Buy Also



WITHIN FAMILY:

- Easy Tripod Easel
 - Station 100 Easel
 - Station 300 Easel
 - Frameless Classic Easel
- Earth-It Mobile Easel

QR CODE:



Author: Sandra Faria

Approval: *Sandra Faria*

Revision: 00
Date: 30-09-2013