

**PRODUCT SHORT DESCRIPTION:**

Earth-It Enamel Board Aluminium Frame

**FEATURES AND BENEFITS:**

- High performance enamel surface ideal for intensive use
- Combines durability, superior visibility, exceptionally smooth writing / erasing and scratch resistance
- Aluminium pen tray and wall fastening kit included
- Vertical or horizontal mounting
- 25 years warranty on board surface
- Certified with C2C Silver

**PRODUCT IMAGE:**



**MARKETING COPY:**

Giving preference to recycled and recyclable materials in its manufacture, Bi-Office Earth-It! products combine fine quality with a responsive approach on the environmental issues our planet is now facing. In our pursuit for excellence we match our office and communication solutions with the highest standards in sustainable development.

Answering to the contemporary need of finding sustainable options for the continued development of our consumer needs, Bi-Office products are offered in ecologically concerned formats. Our Earth-It! presentation boards provide our customers with the best performance and professional quality, from recycled and recyclable materials.

**APPLICATION AND SALES PROPOSITION:**

**TARGET MARKET:**

CHANNEL: Office products wholesalers, office products stores, decoration products wholesalers, decoration stores and other retailers

END USERS: conference centers, hotels, companies and organizations in general

**ADDITIONAL NOTES:**

Other information supports: our official websites, Youtube®, Facebook®, catalogue and online catalogue, demo videos and more.

**PROMOTIONAL TIPS:**

No specific timing, thus we recommend the occasional promotion like product and offering of cleaning kits or markers

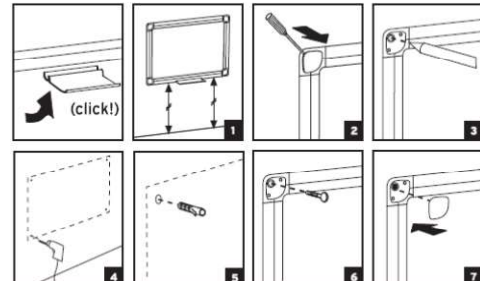
**RANGING TABLE:**

Frame/Colour:	Surface/Colour:	Product Size:	Packed mm	N.W. kg	G.W. kg	Reference:	EAN:	RRP:
Grey aluminium	White ceramic steel	600x450	720x470x20	1,69	2,09	CR0420790		---
Grey aluminium	White ceramic steel	900x600	1042x610x26	3,31	4,24	CR0620790		---
Grey aluminium	White ceramic steel	1200x900	1330x920x25	7,00	8,94	CR0820790		---
Grey aluminium	White ceramic steel	1500x1000	1650x1050x25	9,60	12,19	CR0920790	5603750549796	---
Grey aluminium	White ceramic steel	1500x1200	1650x1260x25	11,43	14,53	CR1020790		---
Grey aluminium	White ceramic steel	1800x900	2000x940x25	10,37	13,11	CR1120790	5603750541196	---
Grey aluminium	White ceramic steel	1800x1200	2000x1260x25	13,64	17,28	CR1220790		---

Grey aluminium	White ceramic steel	2000x1000	2200x1050x25	12,70	16,04	CR1320790		---
Grey aluminium	White ceramic steel	2000x1200	2200x1250x25	13,60	17,50	CR1420790		---
Grey aluminium	White ceramic steel	2400x1200	2590x1260x25	18,07	22,77	CR1520790		---

**TECHNICAL DETAILS****COMPOSITION:**

- Aluminum frame
- Wooden based core with enamel surface
- 25 year warranty

**ASSEMBLY OVERVIEW:****CERTIFICATION AND LEGISLATION:**

Ceramic surface complies with EN14864

**ILLUSTRATION:****SUGGESTED ADVERT:****Earth-It Enamel Board****Earth-It Enamel Board Aluminium Frame**

- High performance enamel surface ideal for intensive use
- Combines durability, superior visibility, exceptionally smooth writing / erasing and scratch resistance
- Aluminium pen tray and wall fastening kit included
- Vertical or horizontal mounting
- 25 years warranty on board surface
- Certified with C2C Silver

**WITHIN FAMILY:**

- Earth-it melamine board
- Earth-it lacquered steel board
- Earth-it Trio Maya white boards

**QR CODE:**