

PRODUCT SHORT DESCRIPTION:

Gridded steel sheet over a pinboard core enables the use of both pins and magnets

FEATURES AND BENEFITS:

- Essential Sapphire Series:
 - Good value for money, ideal for all audiovisual and educational use
- Dual purpose board
- Pinboard core enables the use of pins
- Use of magnets helps protect documents
- Contemporary anodized aluminium frame
- Concealed wall fixings through plastic corners
- Wall fastening kit included
- Available in White, Grey or Black finish

PRODUCT IMAGE:



MARKETING COPY:

Simple and straightforward, the products in this line are the most versatile notice boards in the market. Sober and well-designed, they come in a wide range of solutions and combinations. Maya Series Notice Boards are extremely adaptable, durable and efficient. Our combination boards can be used as notice or presentation boards with equal efficiency.

APPLICATION AND SALES PROPOSITION:

- Versatile Solution
- Great value for money solution

TARGET MARKET:

CHANNEL: Office products wholesalers, office products stores, other retailers and building contractors
 END USERS: conference centers, hotels, public buildings, public store buildings and private and public buildings in general

ADDITIONAL NOTES:

Other information supports: our official websites, Youtube®, Facebook®, catalogue and online catalogue, demo videos and more.

PROMOTIONAL TIPS:

No specific timing, thus we recommend the occasional promotion like offering of accessories.

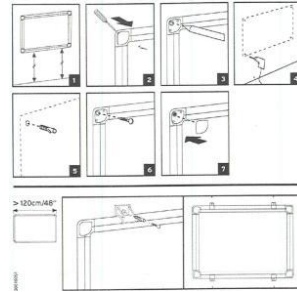
RANGING TABLE:

Frame/Colour:	Surface/Colour:	Product Size:	Packed mm	N.W. kg	G.W. kg	Reference:	RRP:
<i>ESSENTIAL SAPPHIRE SERIES</i>							
Grey Aluminium	White cork and metallic grid	600x450	720x470x22	1,30	2,00	CA0212170	-
Grey Aluminium	White cork and metallic grid	900x600	1030x620x25	2,80	3,75	CA0312170	-
Grey Aluminium	White cork and metallic grid	1200x900	1330x920x25	4,60	6,30	CA0512170	-
Grey Aluminium	Grey cork and metallic grid	600x450	720x470x22	1,30	2,00	CA020170	-
Grey Aluminium	Grey cork and metallic grid	900x600	1030x620x25	2,80	3,75	CA030170	-
Grey Aluminium	Grey cork and metallic grid	1200x900	1330x920x25	4,60	6,30	CA050170	-
Grey Aluminium	Black cork and metallic grid	600x450	720x470x22	1,30	2,00	CA0211170	-

Frame/Colour:	Surface/Colour:	Product Size:	Packed mm	N.W. kg	G.W. kg	Reference:	RRP:
Grey Aluminium	Black cork and metallic grid	900x600	1030x620x25	2,80	3,75	CA0311170	-
Grey Aluminium	Black cork and metallic grid	1200x900	1330x920x25	4,60	6,30	CA0511170	-

TECHNICAL DETAILS**COMPOSITION:**

- Aluminium frame
- Combination of cork with metallic gridded surface
- Wooden base core
- 2 years warranty

ASSEMBLY OVERVIEW:**CERTIFICATION AND LEGISLATION:**

n/a

ILLUSTRATION:

n/a

SUGGESTED ADVERT:**Maya Combonet Board - Essential Sapphire Series****Gridded steel sheet over a pinboard core enables the use of both pins and magnets**

- Essential Sapphire Series:
 - Good value for money, ideal for all audiovisual and educational use
- Dual purpose board
- Pinboard core enables the use of push pins
- Use of magnets helps protect documents
- Contemporary anodized aluminium frame
- Concealed wall fixings through plastic corners
- Wall fastening kit included
- Available in White, Grey or Black finish

**WITHIN FAMILY:**

- Maya Cork Board
- Maya Felt Board
- Maya Combo Board
- Maya Combonet Board
- Provision Techcork Board
- Unframed Felt Board
- Provision Fabric Board
- Provision Felt Board
- Provision Softouch
- Mastervision Softouch Board
- Mastervision Techcork Board

QR CODE:

Author: Ana Oliveira

Approval:

Revision: 00
Date: 20-04-2015