

LINEA steel 04 chrome with a Multiblock mechanism



DESCRIPTION

Seat and backrest

- wide comfortable seat and ergonomically profiled backrest
- comfortable, high backrest
- backrest upholstered on both sides

Mechanism

- free floating seat and backrest
- maximum backrest tilt angle 16°
- possibility of seat and backrest lock in 5 positions
- adjustable backrest tilt force
- Anti-shock - the feature controls the backrest to avoid hitting a user's back
- smoothly adjustable chair height with pneumatic lift

Armrests

- steel armrests with soft upholstered pads

Base

- polished aluminum

Castors

- self-braking castors for carpets or parquets

FINISHES

SPLIT LEATHER



Composition: split leather (1.1 - 1.3 mm)

KAIMAN



Composition: upper layer: 100% polyurethane
bottom layer: 70% polyester, 30% cotton

Weight: 435 g/m²

Abrasion Resistance: 100 000 Martindale cycles

Flammability: BS 5885 Source 0

Other: Hydrolisis (DIN EN ISO 32100 (DIN 53351) / DIN 53359) - 15 000 revs

SEMPRE



Composition: 100% polyester

Weight: 366 g/m²

Abrasion Resistance: 160 000 Martindale cycles

Flammability: EN 1021-1, EN 1021-2

Other: hygienic certificate by National Hygiene Institute in Poland

VALENCIA



VL0020 VL0034 VL1048 VL2074 VL3001 VL3067 VL4041



VL4043 VL4045 VL5001 VL5041 VL6012 VL6019 VL7001



VL9035

Composition: upper layer: 100% vinyl, bottom layer: 100% polyester Hi-Loft

Weight: 650 g/m²

Abrasion Resistance: 300 000 Martindale cycles

Flammability: EN 1021-1, EN 1021-2, DIN 4102 B2, NF P 92-503 M2, Önorm B 3825, Önorm A 3800-1 Q1

Other: EN 71-3 Safety of toys (migration of certain elements)

PERMABLOK3® - superior antibacterial, antistain and antifungal protection

SILVERTEX



SX0009 Sx2011 SX2016 SX3066 SX4001 SX4002 SX4024



SX5008

Composition: upper layer: 100% vinyl, bottom layer: 100% polyester Hi-Loft

Weight: 685 g/m²

Abrasion Resistance: 300 000 Martindale cycles

Flammability: EN 1021-1, EN 1021-2, DIN 4102 B1, NF P 92-503 M2, Önorm B 3825, Önorm A 3800-1 Q1

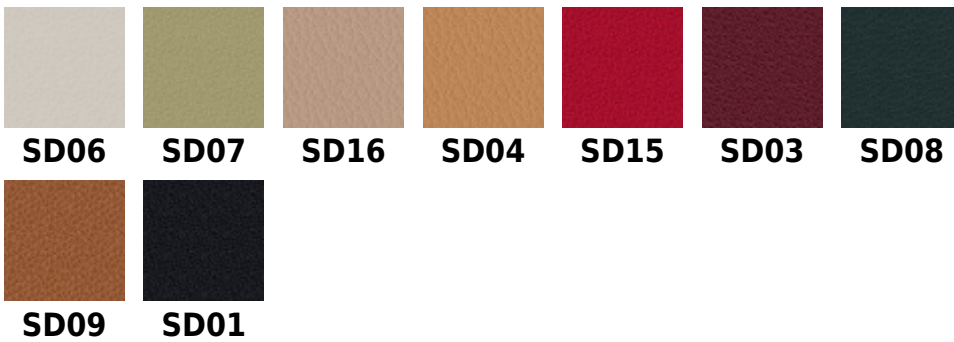
Other:

PERMABLOK3® - superior antibacterial, antistain and antifungal protection

SILVERGUARD® - natural environmentally friendly bacteria fighting defense to inhibit odour and stain causing bacteria

(silver ion technology)

FINE LEATHER SD



Composition: soft grain leather (0.9 - 1.1 mm), thoroughly dyed (completely dyed)

FINE LEATHER LE



Composition: soft grain leather (0,9 - 1,1 mm), thoroughly dyed (completely dyed)

FINE LEATHER LE FRONT



Composition: soft grain leather (0,9 - 1,1 mm), thoroughly dyed (completely dyed)

FINE LEATHER SD FRONT

Composition: soft grain leather (0.9 - 1.1 mm), thoroughly dyed (completely dyed)

ERA



Composition: 100% polyester

Weight: 320 g/m²

Abrasion Resistance: ≥100 000 Martindale cycles

Flammability: EN 1021-1, EN 1021-2, BS 7176 LOW hazard

Synergy

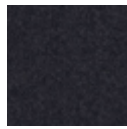




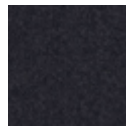
LDS_45



LDS_55



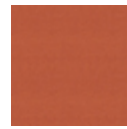
LDS_63



LDS_73



LDS_74



LDS_75



LDS_05



LDS_17

Composition: 95% wolle, 5% polyamid

Weight: 4000 g/m²

Abrasion Resistance: 100 000 Martindale cycles

Flammability: EN 1021-1, EN 1021-2, BS 7176 low hazard, UNI 9175 Classe, 1.IM, NF D 60-013 AM18, Önorm A 3800-1 Q1

All rights reserved 2013 Nowy Styl Group

CONTACT

Nowy Styl Sp. z o.o.
Pużaka 49
38-400 Krosno
Tel. +48 13 43 76 100
Fax +48 13 43 62 732
info@nowystylgroup.com

Export Department

Mięsowicza 6
38-400 Krosno
Poland
Tel. +48 13 43 76 111
export@nowystylgroup.com

Marketing Department

Warszawska 15
32-086 Węgrzce
Poland
Tel. +48 12 63 98 602